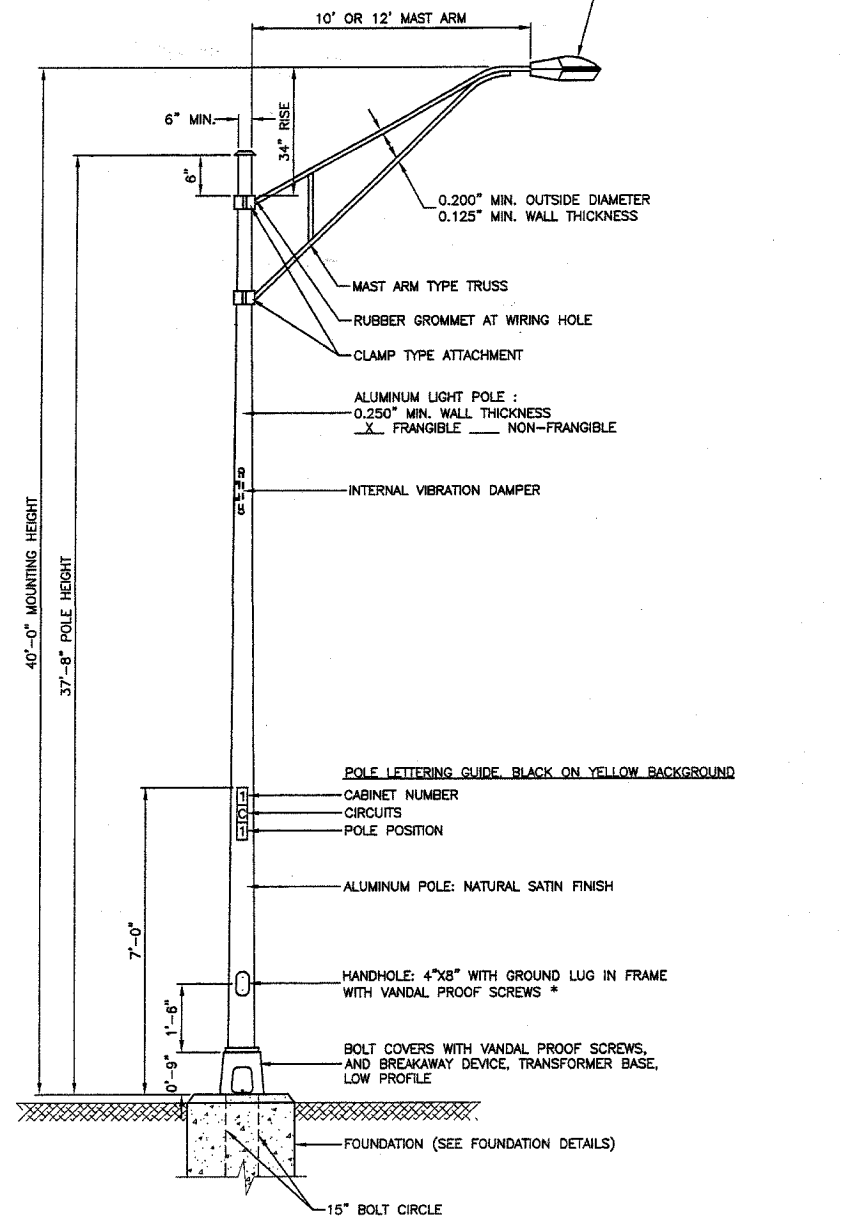


F.A.P. NO.	SECTION	COUNTY	TOTAL SHEETS	SHEET NO.
344	3034 N-1	COOK	71	44
FED. ROAD DIST. NO. 1		ILLINOIS	FED. AID PROJECT	

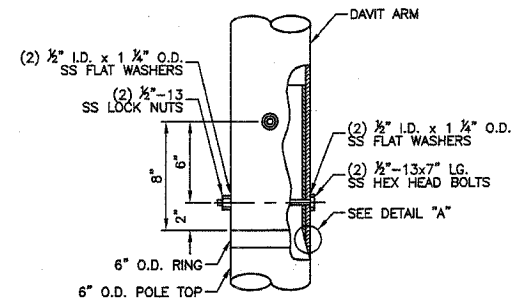
LUMINAIRE:
 250 WATT OR 400 WATT HIGH PRESSURE SODIUM LAMP
 240 VOLT BALLAST
 I.E.S. TYPE: MC III OR MC II LIGHT DISTRIBUTION
 LENS TYPE: FLAT
 INITIAL LAMP LUMENS: 28,000 OR 50,000
 LAMP LIFE: 24,000 HOURS



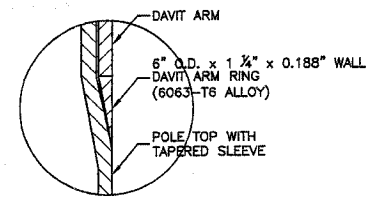
- NOTES:**
1. THE LIGHTING UNITS SHALL MEET AASHTO DESIGN CRITERIA. DESIGN FOR 90 M.P.H. WIND WITH 50% GUST AND 75 POUND LUMINAIRE HAVING AN E.P.A. OF 1.6 SQ. FT. AND PROPER ICE LOADING.
 2. ALUMINUM ALLOY 6063-T6 SHALL BE USED.

TYPICAL POLE INSTALLATION (40' MH)

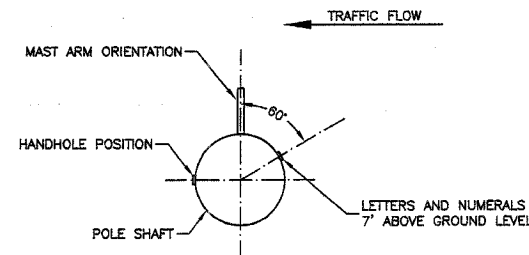
* - BUTTON HEAD SOCKET SET SCREW TYPE OF SCREWS PREFERRED FOR THIS APPLICATION



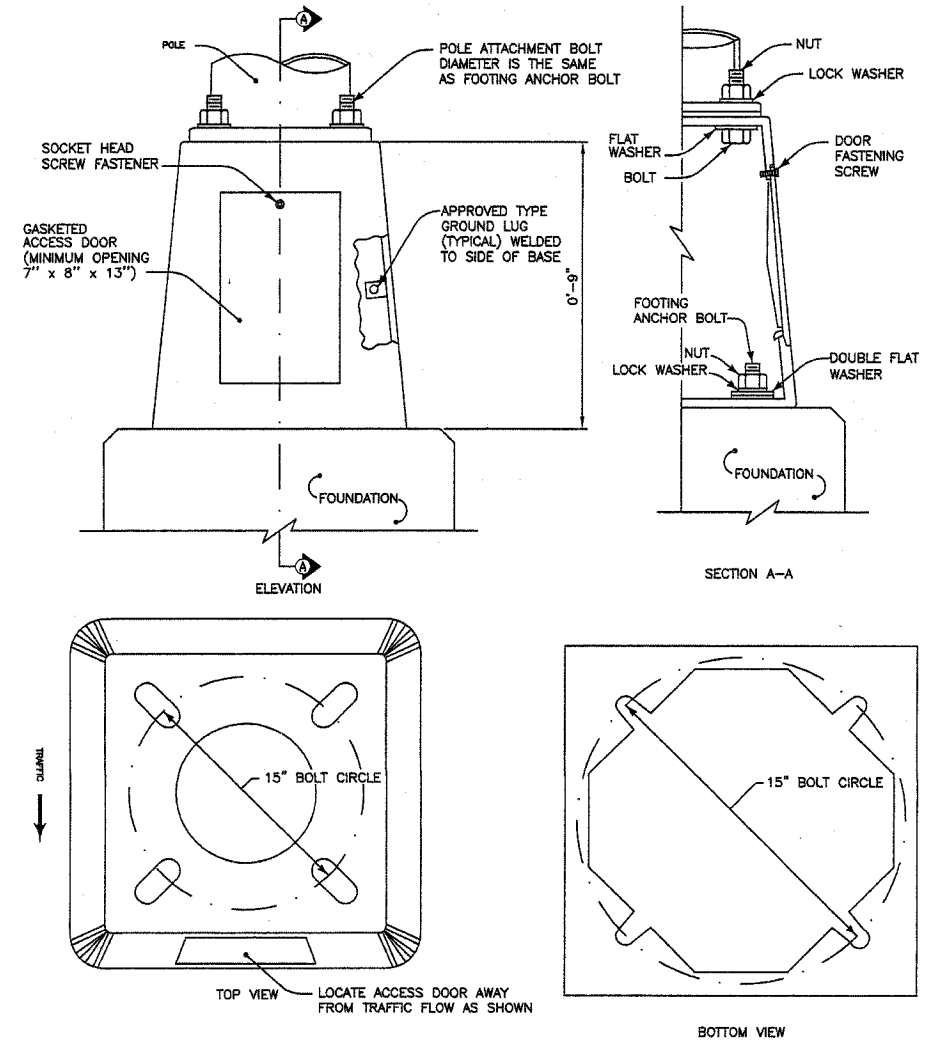
CONNECTION DETAIL



DETAIL "A"



POSITION OF HANDHOLE AND NUMERALS ON POLE



- TRANSFORMER BASE NOTES:**
1. THE DETAILS INDICATED HEREON ARE TYPICAL FOR A CAST ALUMINUM TRANSFORMER BASE. ALTERNATE DESIGNS MAY BE SUBMITTED TO THE ENGINEER FOR APPROVAL.
 2. ALL DIMENSIONS SHALL MEET AASHTO STANDARDS.
 3. MATERIALS AND METHODS OF CONSTRUCTION SHALL BE IN ACCORDANCE WITH 2002 IDOT STANDARD SPECIFICATIONS FOR ROAD AND BRIDGE CONSTRUCTION.
 4. ALL MATERIALS, COMPONENTS AND EQUIPMENT SHALL BE U.L. LISTED.

BREAKAWAY TRANSFORMER BASE DETAIL

MFT SECTION 06-00173-00-LT

ROBINSON ENGINEERING, LTD.
 CONSULTING REGISTERED PROFESSIONAL ENGINEERS
 AND PROFESSIONAL LAND SURVEYORS
 17005 SOUTH PARK AVENUE SOUTH HOLLAND, ILLINOIS 60473
 (708) 331-6700 FAX (708) 331-3525

© COPYRIGHT 2006
 ILLINOIS DESIGN FIRM REGISTRATION NO. 184001128
 F.A.P. ROUTE 344
 127TH STREET @ MAPLE ROAD
 STREET LIGHTING
 DETAILS

BLUE ISLAND, ILLINOIS

Drawn by: RG Date: 11/27/06
 Checked by: PAP Scale: NONE
 Sheet of Project No. 06-688

REVISIONS		
No.	Date	Remarks