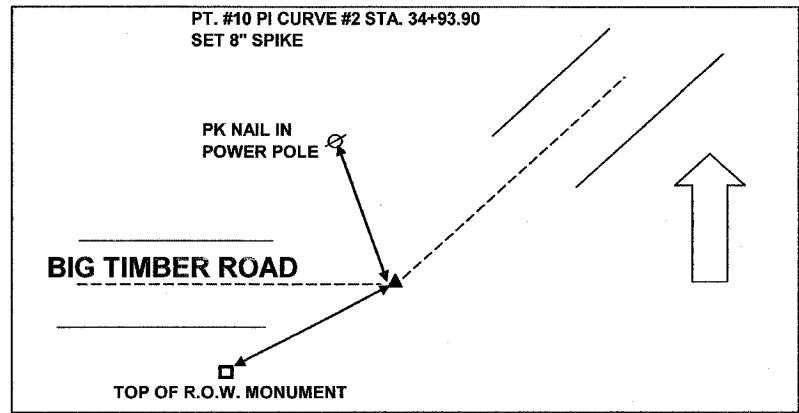


| F.A.P. RTE. | SECTION | COUNTY | TOTAL SHEETS | SHEET NO. |
|-----------------------|---------|---------------------------|--------------|-----------|
| 326 | 106-N-1 | KANE | 82 | 11 |
| STA. | | TO STA. | | |
| FED. ROAD DIST. NO. 1 | | ILLINOIS FED. AID PROJECT | | |

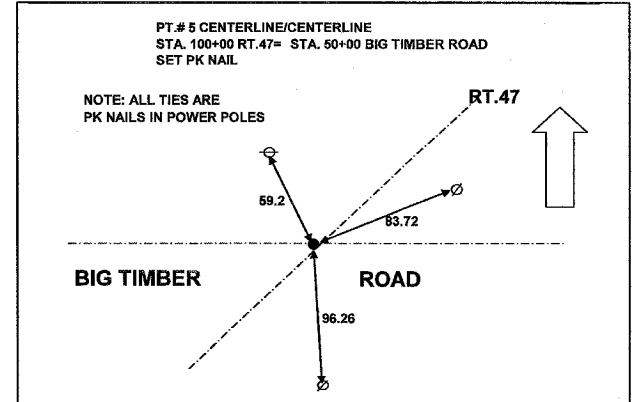
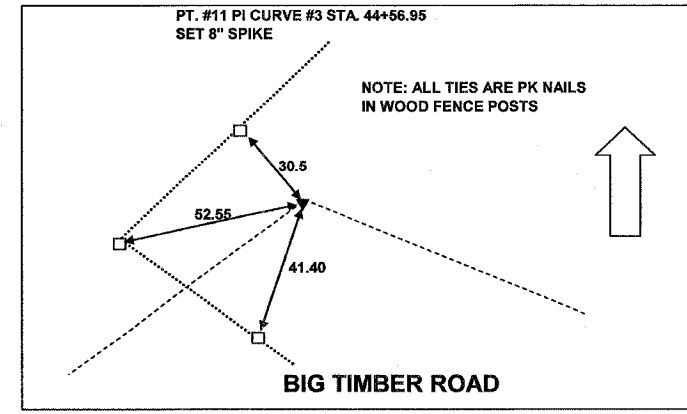
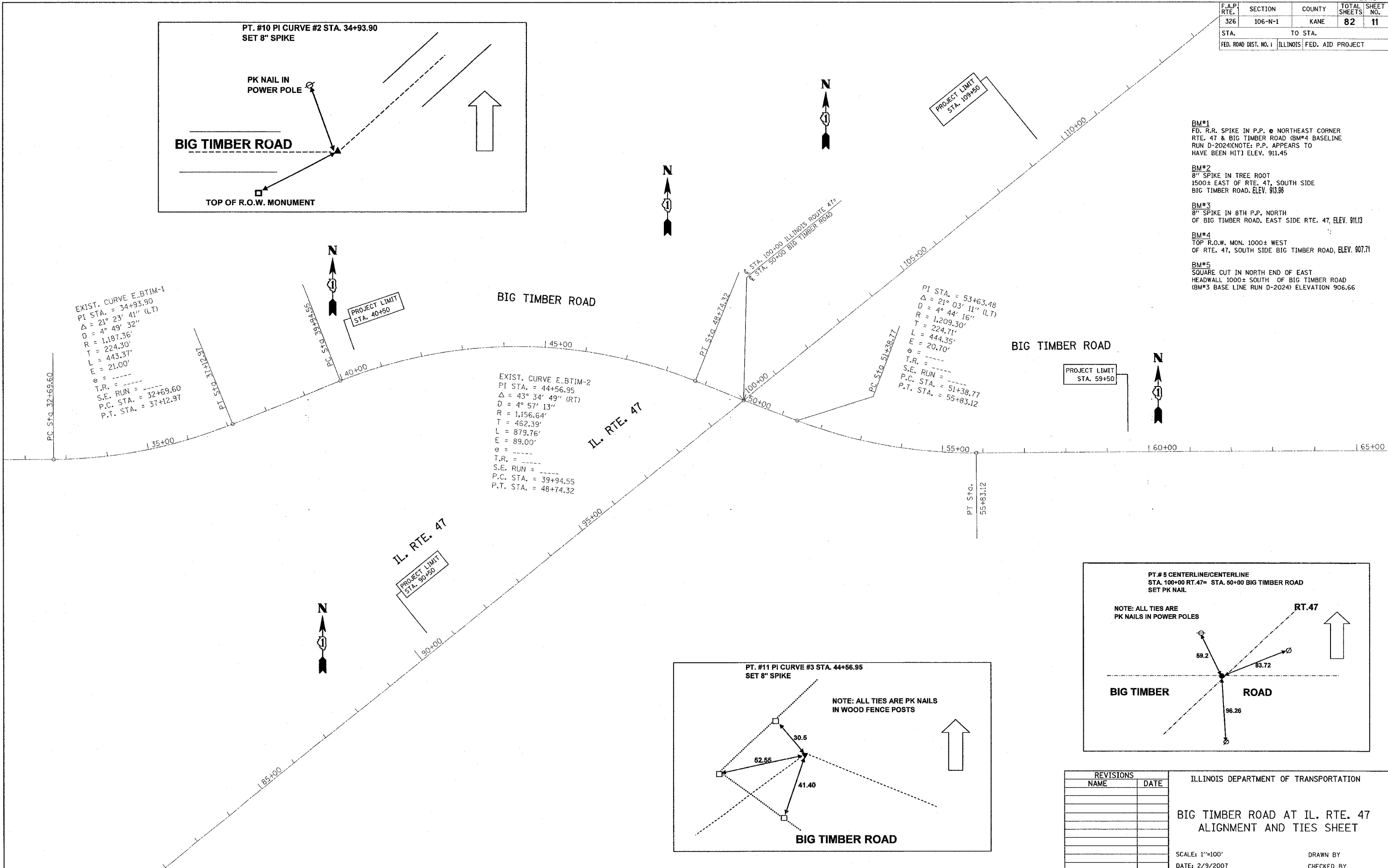


- BM#1**
FD. R.R. SPIKE IN P.P. @ NORTHEAST CORNER RTE. 47 & BIG TIMBER ROAD (BM#4 BASELINE RUN D-2024)(NOTE: P.P. APPEARS TO HAVE BEEN HIT) ELEV. 911.45
- BM#2**
8" SPIKE IN TREE ROOT 1500± EAST OF RTE. 47, SOUTH SIDE BIG TIMBER ROAD. ELEV. 913.96
- BM#3**
8" SPIKE IN 8TH P.P. NORTH OF BIG TIMBER ROAD, EAST SIDE RTE. 47, ELEV. 911.13
- BM#4**
TOP R.O.W. MON. 1000± WEST OF RTE. 47, SOUTH SIDE BIG TIMBER ROAD, ELEV. 907.71
- BM#5**
SQUARE CUT IN NORTH END OF EAST HEADWALL 1000± SOUTH OF BIG TIMBER ROAD (BM#3 BASE LINE RUN D-2024) ELEVATION 906.66

EXIST. CURVE E.BTIM-1
 PI STA. = 34+93.90
 $\Delta = 21^\circ 23' 41''$ (LT)
 $D = 4^\circ 49' 32''$
 $R = 1,187.36'$
 $T = 224.30'$
 $L = 443.37'$
 $E = 21.00'$
 $\theta = \dots$
 $T.R. = \dots$
 $S.E. RUN = 32+69.60$
 $P.C. STA. = 32+69.60$
 $P.T. STA. = 37+12.97$

EXIST. CURVE E.BTIM-2
 PI STA. = 44+56.95
 $\Delta = 43^\circ 34' 49''$ (RT)
 $D = 4^\circ 57' 13''$
 $R = 1,156.64'$
 $T = 462.39'$
 $L = 879.76'$
 $E = 89.00'$
 $\theta = \dots$
 $T.R. = \dots$
 $S.E. RUN = \dots$
 $P.C. STA. = 39+94.55$
 $P.T. STA. = 48+74.32$

PI STA. = 53+63.48
 $\Delta = 21^\circ 03' 11''$ (LT)
 $D = 4^\circ 44' 16''$
 $R = 1,209.30'$
 $T = 224.71'$
 $L = 444.35'$
 $E = 20.70'$
 $\theta = \dots$
 $T.R. = \dots$
 $S.E. RUN = \dots$
 $P.C. STA. = 51+38.77$
 $P.T. STA. = 55+83.12$



| REVISIONS | |
|-----------|------|
| NAME | DATE |
| | |
| | |
| | |
| | |
| | |
| | |
| | |
| | |
| | |

ILLINOIS DEPARTMENT OF TRANSPORTATION
**BIG TIMBER ROAD AT IL. RTE. 47
 ALIGNMENT AND TIES SHEET**
 SCALE: 1"=100'
 DATE: 2/9/2007
 DRAWN BY
 CHECKED BY

PLOT DATE = 2/9/2007
 PLOT SCALE = 1/8"=100' / IN.
 USER NAME = gaglianob