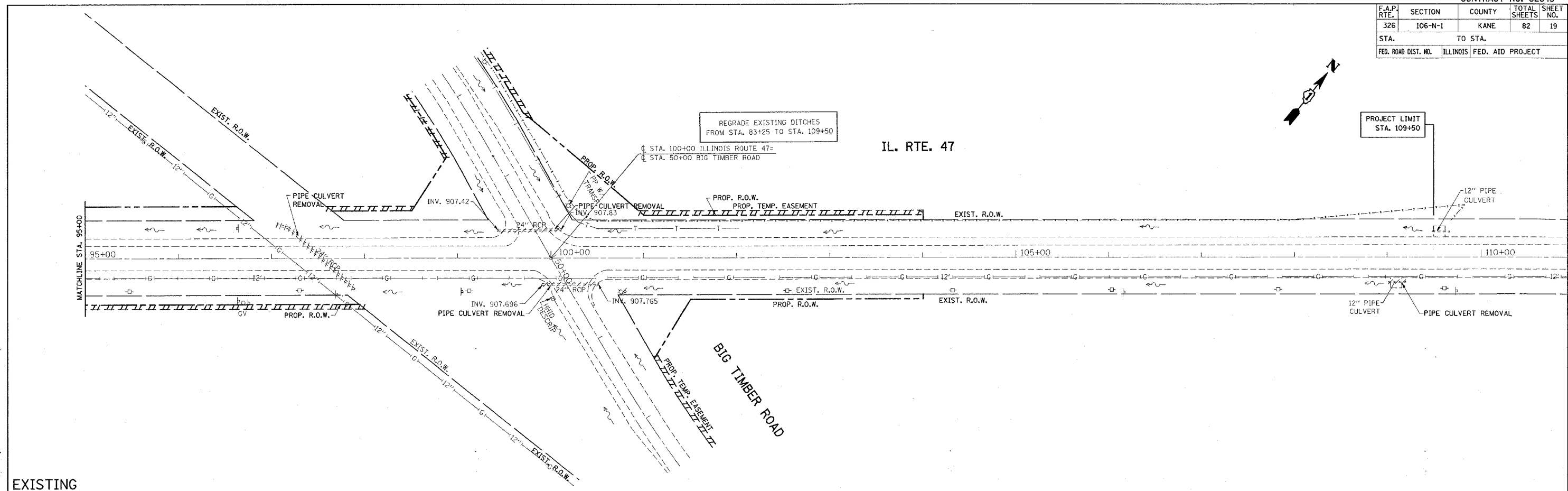
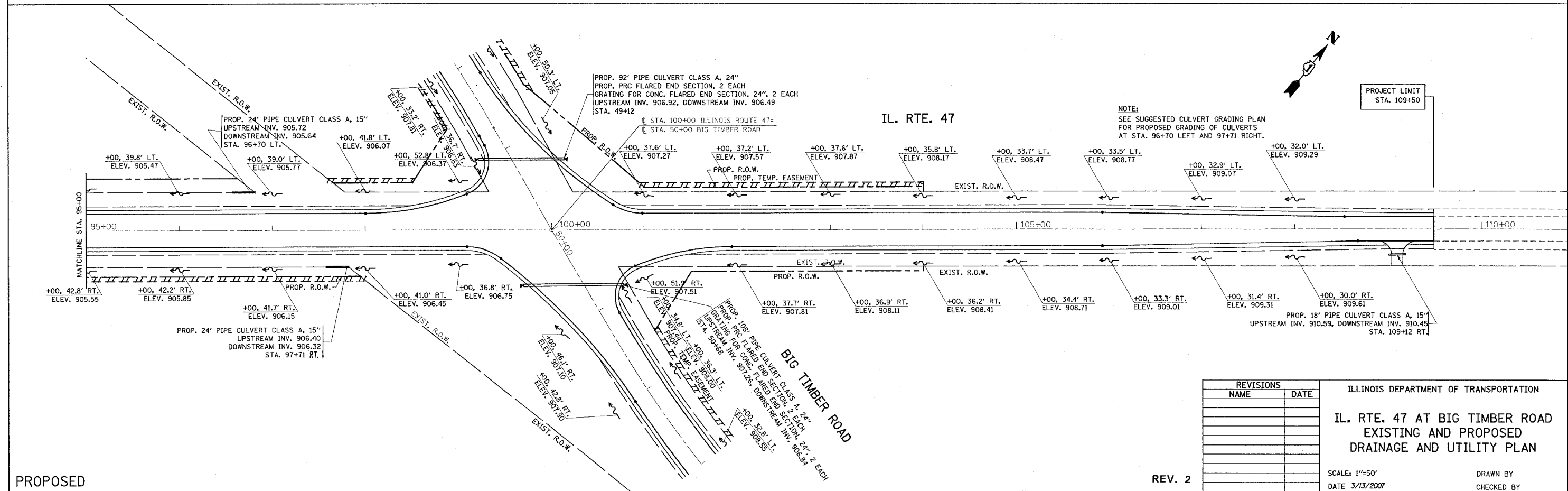


F.A.P. RTE.	SECTION	COUNTY	TOTAL SHEETS	SHEET NO.
326	106-N-1	KANE	82	19
STA. 109+00		TO STA.		
FED. ROAD DIST. NO. ILLINOIS FED. AID PROJECT				



EXISTING



PROPOSED

NOTE:
SEE SUGGESTED CULVERT GRADING PLAN FOR PROPOSED GRADING OF CULVERTS AT STA. 96+70 LEFT AND 97+71 RIGHT.

REVISIONS	
NAME	DATE

ILLINOIS DEPARTMENT OF TRANSPORTATION
IL. RTE. 47 AT BIG TIMBER ROAD
 EXISTING AND PROPOSED
 DRAINAGE AND UTILITY PLAN
 SCALE: 1"=50'
 DATE 3/13/2007
 DRAWN BY
 CHECKED BY

REV. 2

PLOT DATE = 3/13/2007
 FILE NAME = c:\p\projects\106n1\106n1.dwg
 PLOT SCALE = 50.000 / 1 IN.
 USER NAME = jlr\shnd