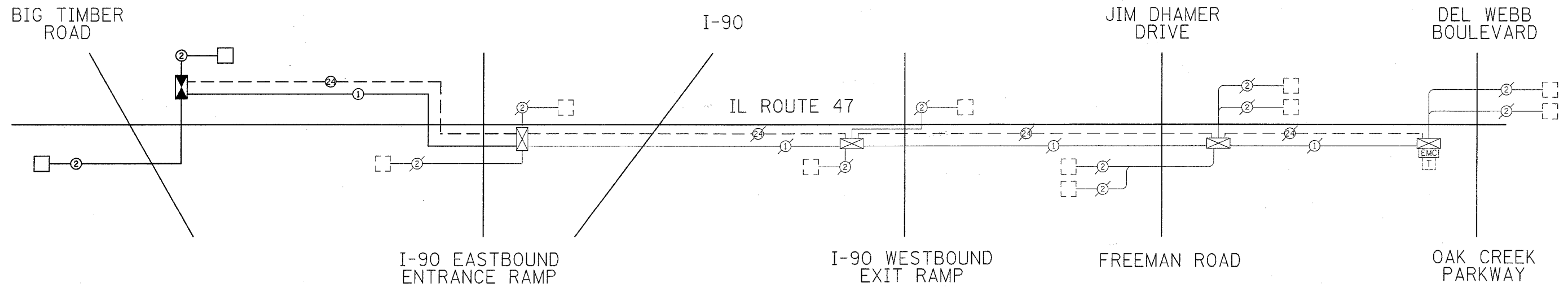
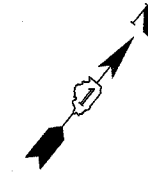


F.A.P. RTE.	SECTION	COUNTY	TOTAL SHEETS	SHEET NO.
326	0106 N-1	KANE	82	45
STA.		TO STA.		
FED. ROAD DIST. NO. 1		ILLINOIS FED. AID PROJECT		



**INTERCONNECT SCHEMATIC LEGEND**

EXISTING INTERSECTION CONTROLLER		EXISTING SAMPLING (SYSTEM) PREFORMED DETECTORS	
PROPOSED INTERSECTION CONTROLLER		PROPOSED SAMPLING (SYSTEM) PREFORMED DETECTORS	
EXISTING MASTER CONTROLLER		EXISTING FIBER OPTIC CABLE IN CONDUIT, NO. 62.5/125, MM12F SM12F	
PROPOSED MASTER CONTROLLER		PROPOSED FIBER OPTIC CABLE IN CONDUIT, NO. 62.5/125, MM12F SM12F	
MASTER MASTER CONTROLLER		EXISTING INTERCONNECT CABLE - NO. 62.5/125 12F FIBER OPTIC CABLE	
EXISTING INTERSECTION & SAMPLING (SYSTEM) DETECTORS		PROPOSED INTERCONNECT CABLE - NO. 62.5/125 12F FIBER OPTIC CABLE	
PROPOSED INTERSECTION & SAMPLING (SYSTEM) DETECTORS		EXISTING INTERCONNECT CABLE - NO. 18 3 PAIR TWISTED, SHIELDED	
EXISTING INTERSECTION LOOP DETECTORS		PROPOSED INTERCONNECT CABLE - NO. 18 3 PAIR TWISTED, SHIELDED	
PROPOSED SAMPLING (SYSTEM) DETECTORS		EXISTING LOOP DETECTOR CABLE 2/C TWISTED, SHIELDED	
EXISTING SAMPLING (SYSTEM) DETECTORS		PROPOSED LOOP DETECTOR CABLE 2/C TWISTED, SHIELDED	
PROPOSED SAMPLING (SYSTEM) DETECTORS		EXISTING ELECTRIC CABLE, 1/C (AS SPECIFIED)	
EXISTING SAMPLING (SYSTEM) DETECTORS, PROPOSED SAMPLING (SYSTEM) DETECTORS,		PROPOSED ELECTRIC CABLE, 1/C (AS SPECIFIED)	
EXISTING INTERSECTION AND SAMPLING (SYSTEM) DETECTORS,		EXISTING TELEPHONE CONNECTION	
EXISTING SAMPLING (SYSTEM) DETECTORS, PROPOSED SAMPLING (SYSTEM) DETECTORS,		PROPOSED TELEPHONE CONNECTION	
EXISTING PREFORMED INTERSECTION & SAMPLING (SYSTEM) DETECTORS			
PROPOSED PREFORMED INTERSECTION & SAMPLING (SYSTEM) DETECTORS			

INTERCONNECT SCHEDULE OF QUANTITIES		
PAY ITEM	UNIT	QUANTITY
CONDUIT IN TRENCH, 2" DIA., GALVANIZED STEEL	FOOT	4200
HEAVY-DUTY HANDHOLE	EACH	7
TRENCH AND BACKFILL FOR ELECTRICAL WORK	FOOT	4200
MAINTENANCE OF EXISTING TRAFFIC SIGNAL INSTALLATION	EACH	1
ELECTRIC CABLE IN CONDUIT, TRACER, NO. 14 1C	FOOT	4531
FIBER OPTIC CABLE IN CONDUIT, NO. 62.5/125, MM12F SM12F	FOOT	4543
FIBER OPTIC CABLE ON MESSENGER, NO. 62.5/125, MM12F SM12F	FOOT	347
RE-OPTIMIZE TRAFFIC SIGNAL SYSTEM - LEVEL II	EACH	1

NOTE:  
THE TRAFFIC SIGNAL CONTROLLER EQUIPMENT FOR THIS PROJECT SHALL BE "EAGLE" TO MATCH THE EXISTING ADJACENT SYSTEM.

REVISIONS	
NAME	DATE

ILLINOIS DEPARTMENT OF TRANSPORTATION  
**INTERCONNECT SCHEMATIC AND SCHEDULE OF QUANTITIES**  
 ILL. ROUTE 47  
 BIG TIMBER RD TO OAK CREEK PKWY  
 SCALE: NOT TO SCALE  
 DATE: 1/22/2007  
 DRAWN BY: CEC  
 CHECKED BY: JJE