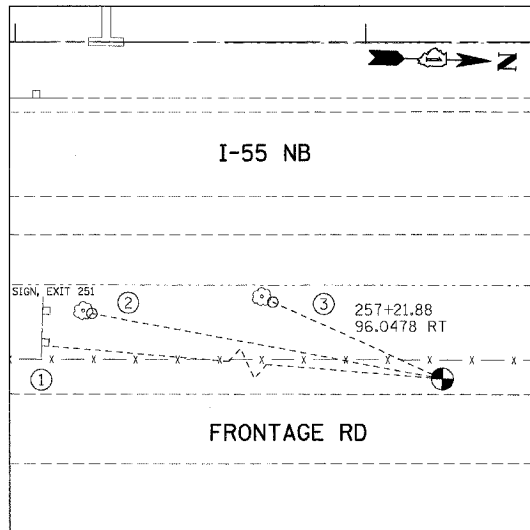
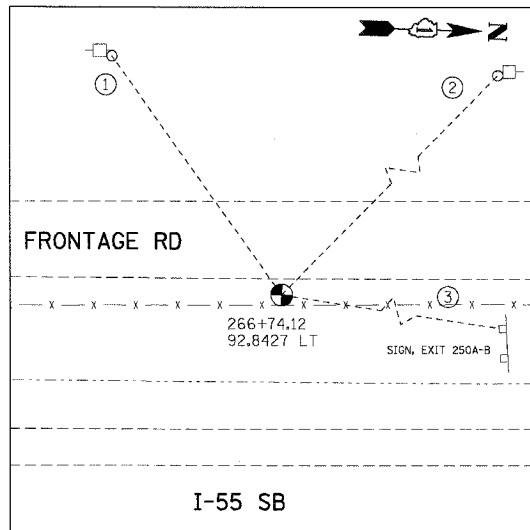


F.A.I. RTE.	SECTION	COUNTY	TOTAL SHEETS	SHEET NO.
55	99 (I&2) WRS	WILL	334	40
STA.	TO STA.			
FED. ROAD DIST. NO.	ILLINOIS FED. AID PROJECT			



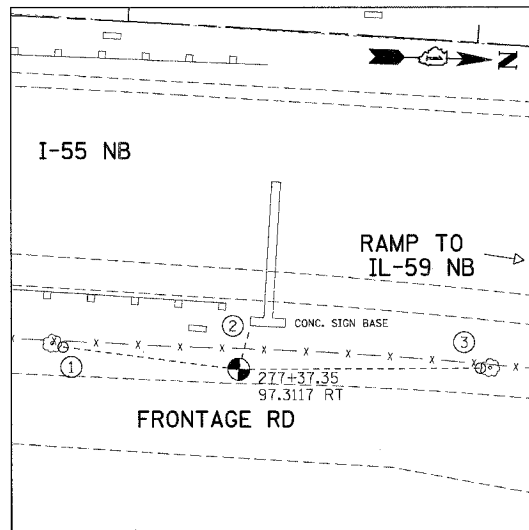
TP11

- (N 1760200.014, E 1021431.801, ELEV. 586.597)
- ① NEAREST CORNER OF SIGN POST, 318.80'
 - ② PK NAIL ON NORTH FACE OF 10" TREE, 101.80'
 - ③ PK NAIL ON NORTH FACE OF 12" TREE, 53.14'



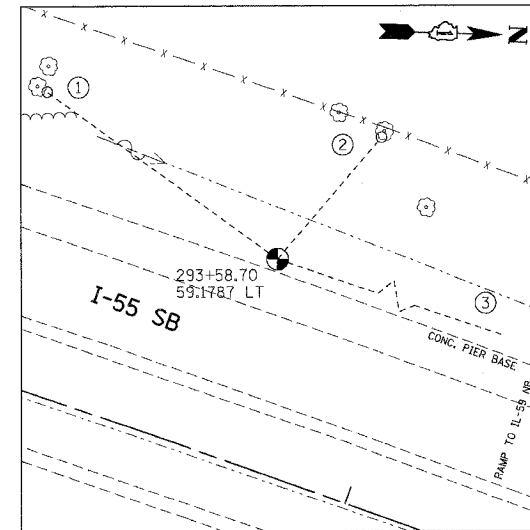
TP12

- (N 1761145.966, E 1021213.588, ELEV. 590.855)
- ① PK NAIL ON NORTH FACE OF POWER POLE, 83.45'
 - ② PK NAIL ON SOUTH FACE OF POWER POLE, 179.20'
 - ③ NEAREST CORNER OF SIGN POST, 227.45'



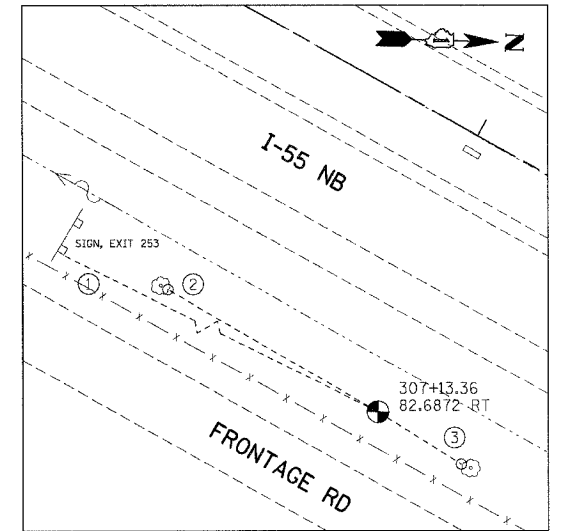
TP13

- (N 1762208.792, E 1021381.377, ELEV. 596.094)
- ① PK NAIL ON NORTH FACE OF 14" TREE, 50.53'
 - ② NEAREST CORNER OF CONC. SIGN BASE, 12.20'
 - ③ PK NAIL ON EAST FACE OF 16" TREE, 68.97'



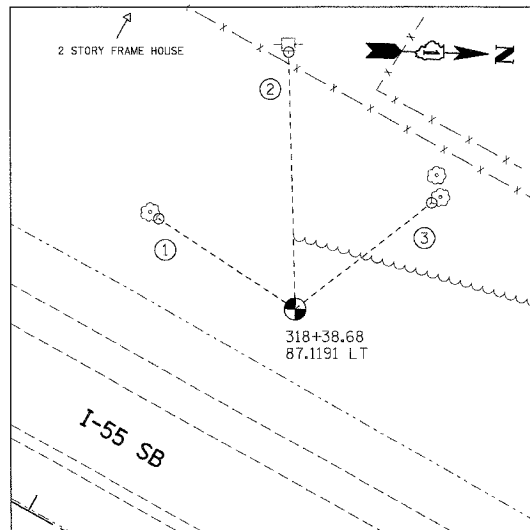
TP14

- (N 1763822.452, E 1021501.351, ELEV. 596.851)
- ① PK NAIL ON NORTH FACE OF 12" TREE, 81.23'
 - ② PK NAIL ON EAST FACE OF 12" TREE, 45.72'
 - ③ CORNER OF CONC. PIER BASE, 274.15'



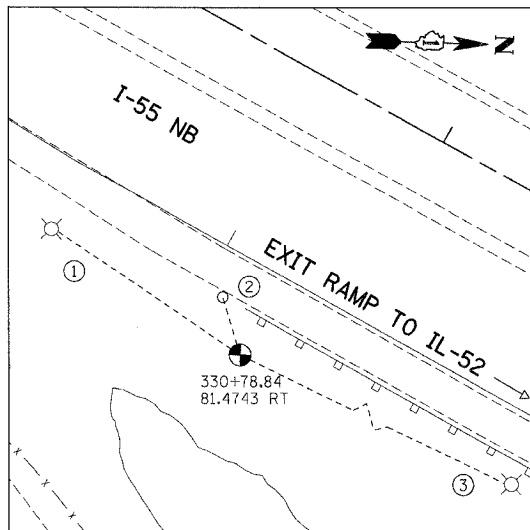
TP15

- (N 1765002.134, E 1022180.735, ELEV. 597.966)
- ① NEAREST CORNER OF SIGN POST, 134.40'
 - ② PK NAIL ON NORTH FACE OF 10" TREE, 69.33'
 - ③ PK NAIL ON SOUTH FACE OF 6" TREE, 28.16'



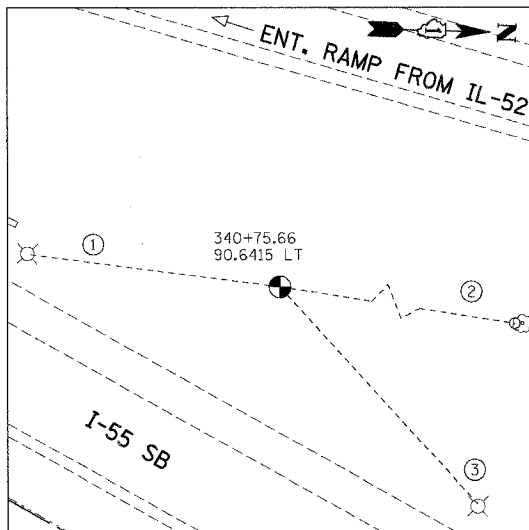
TP16

- (N 1766079.260, E 1022548.112, ELEV. 601.281)
- ① PK NAIL ON NORTH FACE OF 12" TREE, 46.70'
 - ② PK NAIL ON EAST FACE OF POWER POLE, 73.70'
 - ③ PK NAIL ON EAST FACE OF 48" TREE, 49.40'



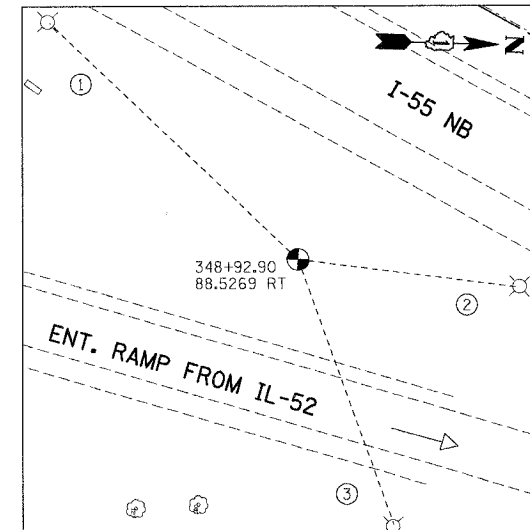
TP17

- (N 1767102.532, E 1023268.763, ELEV. 580.810)
- ① NEAREST FACE OF LIGHT POLE, 62.45'
 - ② PK NAIL IN ASPHALT, 17.10'
 - ③ NEAREST FACE OF LIGHT POLE, 109.30'



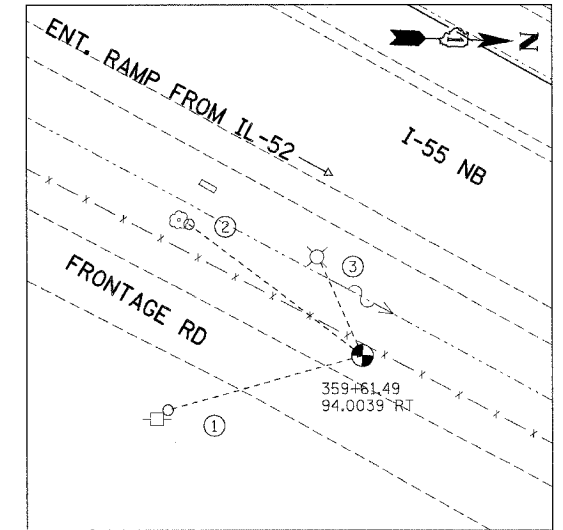
TP18

- (N 1768066.661, E 1023574.931, ELEV. 582.146)
- ① NEAREST FACE OF LIGHT POLE, 72.60'
 - ② PK NAIL ON SOUTH FACE OF 32" TREE, 128.60'
 - ③ NEAREST FACE OF LIGHT POLE, 83.55'



TP19

- (N 1768709.630, E 1024110.251, ELEV. 580.954)
- ① NEAREST FACE OF LIGHT POLE, 97.90'
 - ② NEAREST FACE OF LIGHT POLE, 63.85'
 - ③ NEAREST FACE OF LIGHT POLE, 80.10'



TP20

- (N 1769655.699, E 1024607.111, ELEV. 580.554)
- ① PK NAIL ON NW FACE OF POWER POLE, 57.60'
 - ② PK NAIL ON NORTH FACE OF 14" TREE, 62.10'
 - ③ NEAREST FACE OF LIGHT POLE, 30.40'

NOTE:
ALL CONTROL POINTS ON THIS SHEET WERE SET WITH 2" IRON ROD WITH YELLOW CAP

REVISIONS	
NAME	DATE

ILLINOIS DEPARTMENT OF TRANSPORTATION
FAI ROUTE 55 (I-80 TO BLACK ROAD)
WIDENING AND RESURFACING

ALIGNMENT, TIES AND BENCHMARKS VII

SCALE: N.T.S. DRAWN BY SKJ
DATE 02/23/07 CHECKED BY DDH

TENG TENG & ASSOCIATES, INC.
ENGINEERS/ARCHITECTS/PLANNERS
CHICAGO, ILLINOIS

PLOT DATE = 02/23/07
 FILE NAME = 022307.DWG
 PLOT SCALE = 1/8"=1'-0"
 USER NAME = DDH