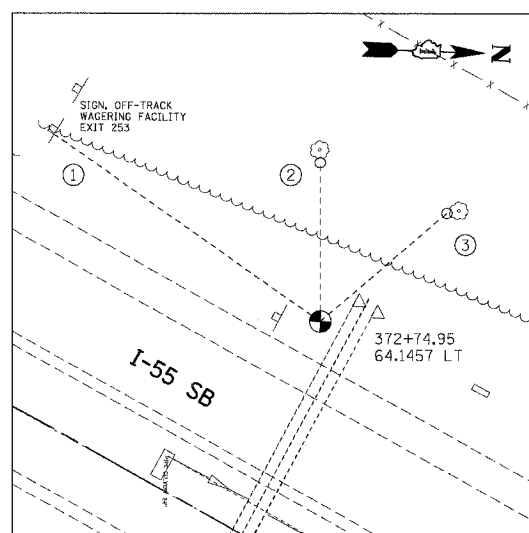
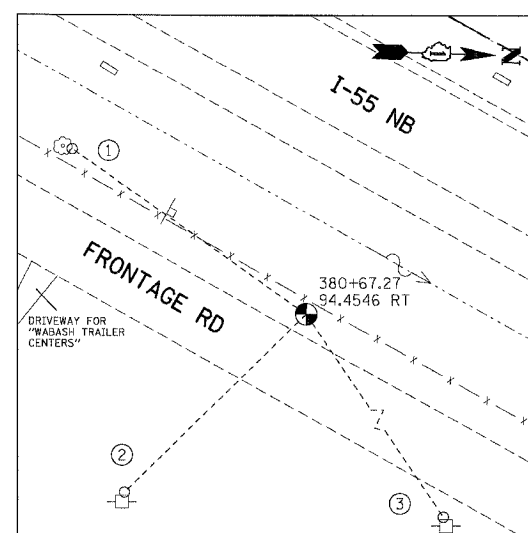


F.A.I. RTE.	SECTION	COUNTY	TOTAL SHEETS	SHEET NO.
55	99 (I&2) WRS	WILL	334	41
STA. TO STA.		ILLINOIS FED. AID PROJECT		



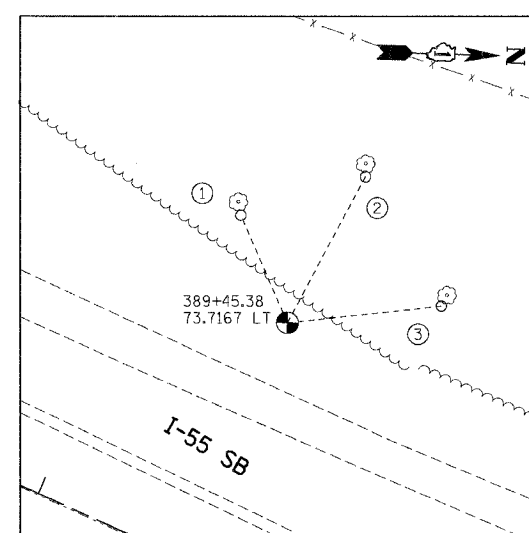
TP21

- (N 1770894.475, E 1025071.461, ELEV. 580.457)
- 1 NEAREST CORNER OF SIGN POST, 94.35'
  - 2 PK NAIL ON WEST FACE OF 12" TREE, 45.05'
  - 3 PK NAIL ON SOUTH FACE OF 14" TREE, 47.50'



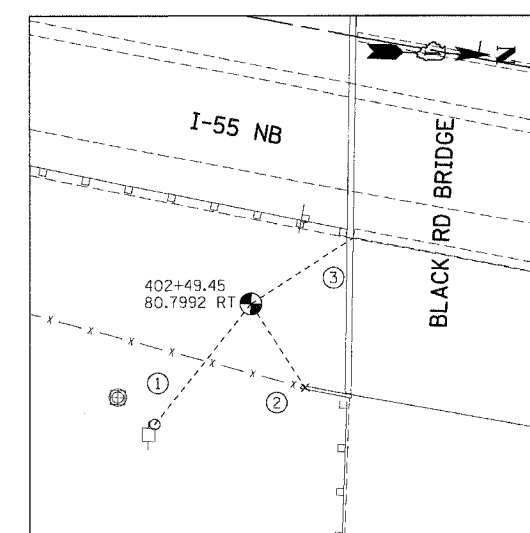
TP22

- (N 1771524.797, E 1025577.049, ELEV. 581.842)
- 1 PK NAIL ON NORTH FACE OF 16" TREE, 81.65'
  - 2 PK NAIL ON WEST FACE OF POWER POLE, 72.95'
  - 3 PK NAIL ON WEST FACE OF POWER POLE, 143.05'



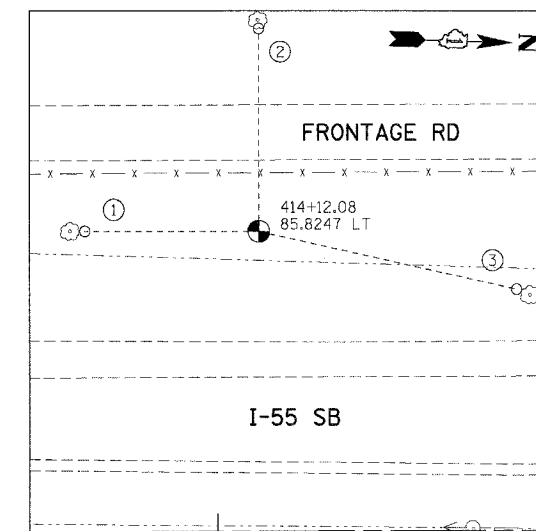
TP23

- (N 1772386.338, E 1025806.470, ELEV. 579.479)
- 1 PK NAIL ON EAST FACE OF 16" TREE, 33.30'
  - 2 PK NAIL ON EAST FACE OF 12" TREE, 47.20'
  - 3 PK NAIL ON EAST FACE OF 28" TREE, 44.20'



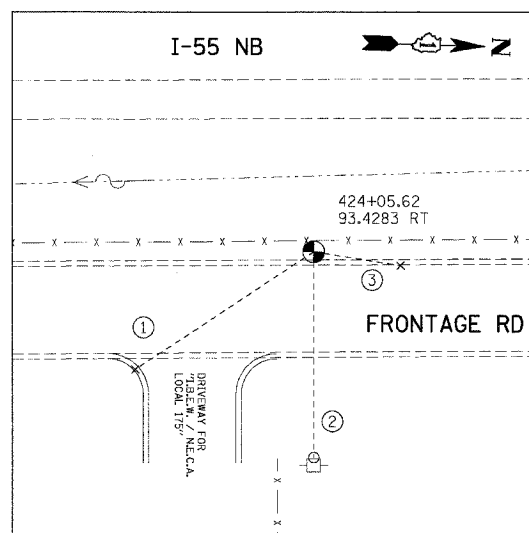
TP24

- (N 1773599.891, E 1026302.676, ELEV. 588.101)
- 1 PK NAIL ON WEST FACE OF POWER POLE, 44.20'
  - 2 CUT CROSS ON TOP OF BRIDGE WING WALL, 28.60'
  - 3 NEAREST CORNER OF CONCRETE PIER BASE, 34.80'



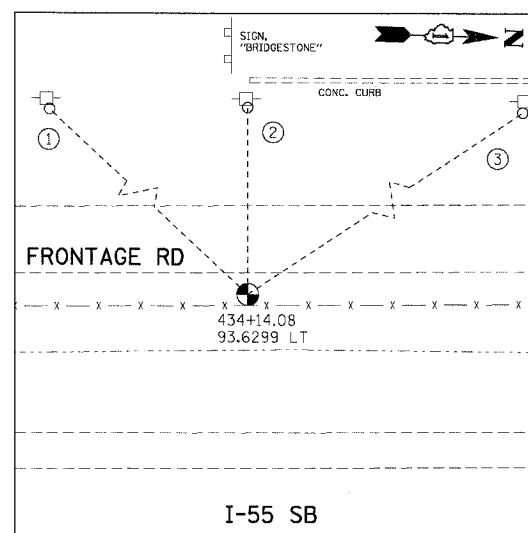
TP25

- (N 1774768.339, E 1026201.638, ELEV. 581.191)
- 1 PK NAIL ON NORTH FACE OF 26" TREE, 49.70'
  - 2 PK NAIL ON WEST FACE OF 24" TREE, 60.70'
  - 3 PK NAIL ON SOUTH FACE OF 14" TREE, 75.50'



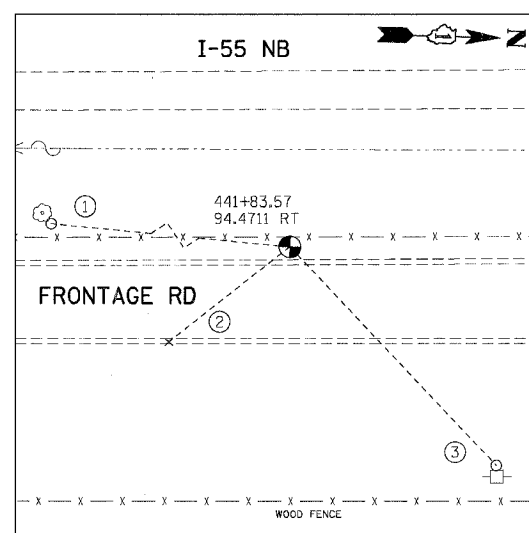
TP26

- (N 1775767.608, E 1026345.581, ELEV. 590.522)
- 1 CUT CROSS SET ON TOP OF CURB, 61.10'
  - 2 PK NAIL ON WEST FACE OF POWER POLE, 58.80'
  - 3 CUT CROSS SET ON TOP OF CURB, 25.10'



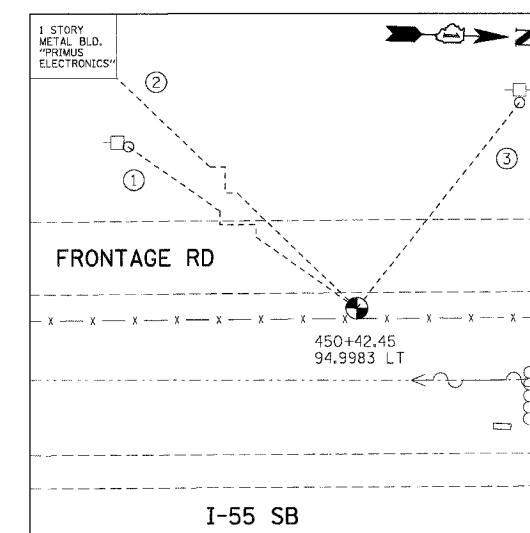
TP27

- (N 1776768.806, E 1026122.916, ELEV. 591.174)
- 1 PK NAIL ON EAST FACE OF POWER POLE, 99.90'
  - 2 PK NAIL ON EAST FACE OF POWER POLE, 53.50'
  - 3 PK NAIL ON EAST FACE OF POWER POLE, 121.63'



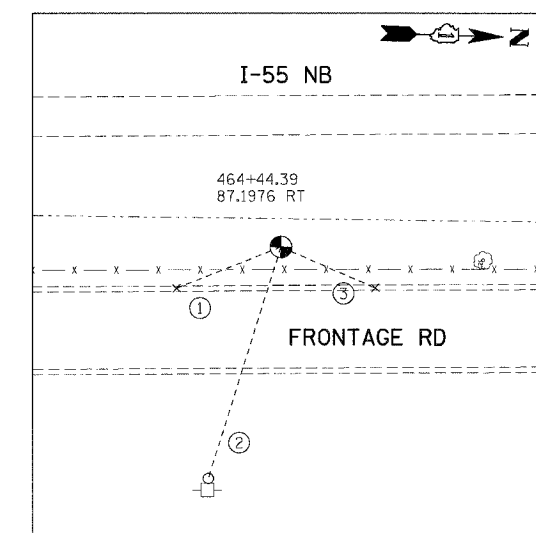
TP28

- (N 1777544.478, E 1026283.640, ELEV. 598.777)
- 1 PK NAIL ON EAST FACE OF 22" TREE, 117.40'
  - 2 CUT CROSS ON TOP OF CURB, 44.00'
  - 3 PK NAIL ON WEST FACE OF POWER POLE, 85.90'



TP29

- (N 1778396.107, E 1026063.864, ELEV. 595.111)
- 1 PK NAIL ON NORTH FACE OF POWER POLE, 161.41'
  - 2 NEAREST CORNER OF BUILDING, 260.10'
  - 3 PK NAIL ON SURFACE OF POWER POLE, 74.90'



TP30

- (N 1779803.620, E 1026196.284, ELEV. 590.699)
- 1 CUT CROSS ON TOP OF CURB, 32.10'
  - 2 PK NAIL ON WEST FACE OF POWER POLE, 69.30'
  - 3 CUT CROSS ON TOP OF CURB, 29.40'

NOTE:  
ALL CONTROL POINTS ON THIS SHEET WERE  
SET WITH 2" IRON ROD WITH YELLOW CAP

REVISIONS	
NAME	DATE

ILLINOIS DEPARTMENT OF TRANSPORTATION  
FAI ROUTE 55 (I-80 TO BLACK ROAD)  
WIDENING AND RESURFACING  
**ALIGNMENT, TIES AND BENCHMARKS  
VIII**

SCALE: N.T.S. DRAWN BY SKJ  
DATE 02/23/07 CHECKED BY DDH

**TENG** TENG & ASSOCIATES, INC.  
ENGINEERS/ARCHITECTS/PLANNERS  
CHICAGO, ILLINOIS

PLOT DATE = 06/25/07  
FILE NAME = 021101.dwg  
USER NAME = MJS/STB  
\\s01p010281\local\...  
2-20-2007 11:58:01 AM  
S:\DOCUMENT\2007\62895\I&2\DRAWING\TIE\TIE000008.DWG