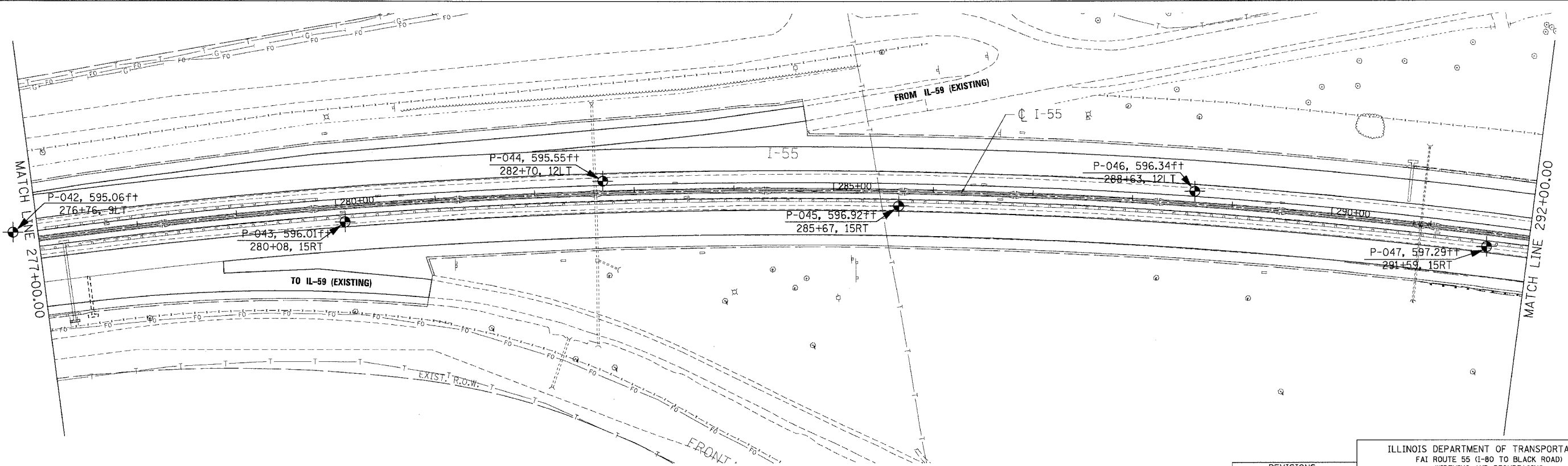
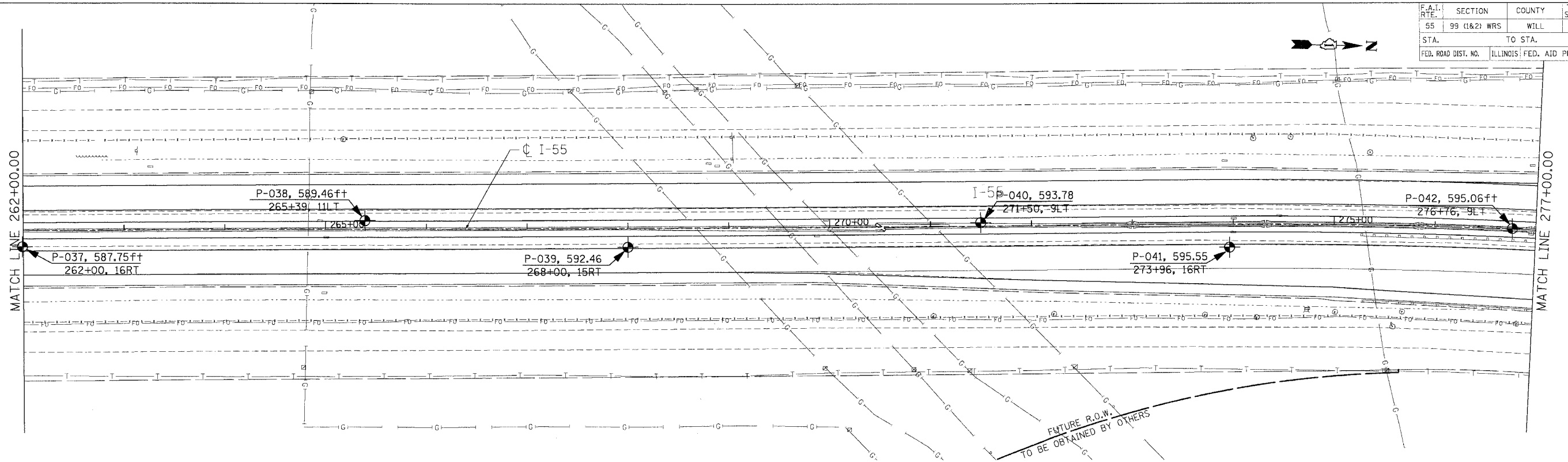


F.A.I. RTE.	SECTION	COUNTY	TOTAL SHEETS	SHEET NO.
55	99 (I&2) WRS	WILL	334	88
STA.		TO STA.		
FED. ROAD DIST. NO.		ILLINOIS FED. AID PROJECT		



PLOT DATE = #DATE#
 FILE NAME = #FILE#
 PLOT SCALE = #SCALE#
 USER NAME = #USER#
 ...\\s01010201.dgn...\\P1010201.dgn...\\X0001AVS5.DGN...\\ALP1010201.dgn...\\X0001AVS5.DGN...\\P1010201.dgn...\\X0001AVS5.DGN...\\SR001C005.SHT
 2-28-2007 11:28:26 WRS\HWZ -S:\DOCUMENT\62895\62895\CIVIL\DRAW\SR001C005.SHT

DRAWN BY: ED/AB CHECKED BY: LI 555-11-01

Wong Engineering, Inc. 1145 Main Street Lombard, IL 60148
 Geo-Environmental Engineers 630-953-9928

CREATED BASED ON DRAWINGS PREPARED BY TENG AND ASSOCIATES, INC.

REVISIONS	
NAME	DATE

ILLINOIS DEPARTMENT OF TRANSPORTATION
 FAI ROUTE 55 (I-80 TO BLACK ROAD)
 WIDENING AND RESURFACING

SOIL BORING PLAN
 FAI 55
 STA. 262+00.00 TO STA. 292+00.00

SCALE: 1"=50'
 DATE 02/23/07
 DRAWN BY MW
 CHECKED BY DDH

TENG TENG & ASSOCIATES, INC.
 ENGINEERS/ARCHITECTS/PLANNERS
 CHICAGO, ILLINOIS