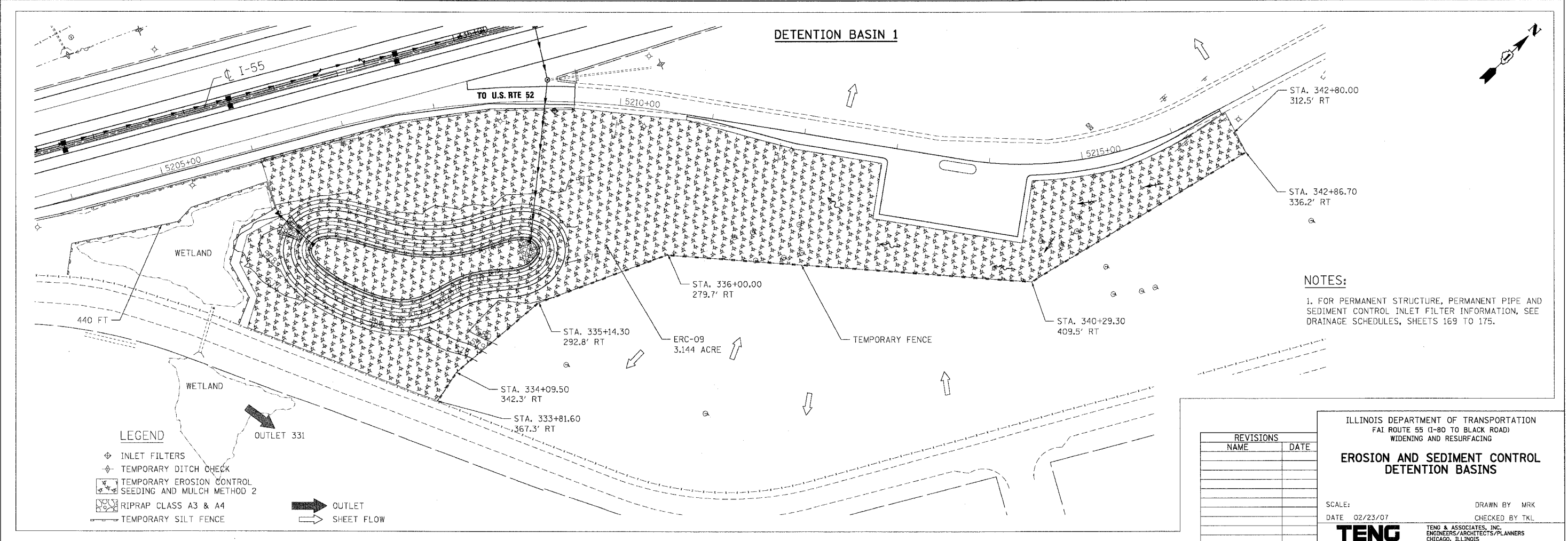
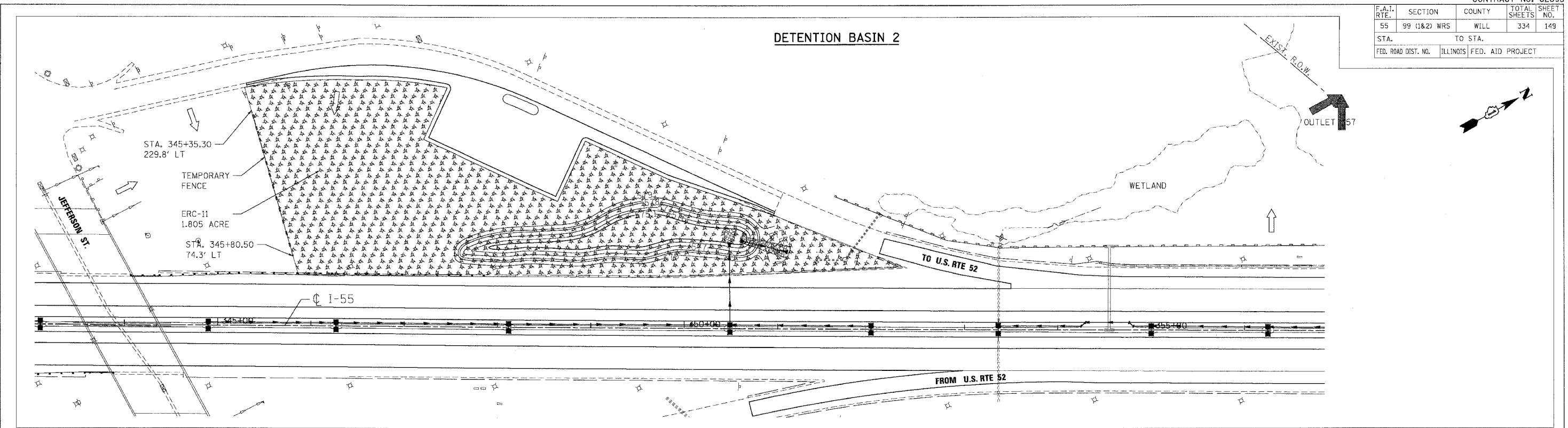


F.A.I. RTE.	SECTION	COUNTY	TOTAL SHEETS	SHEET NO.
55	99 (1&2) WRS	WILL	334	149
STA.		TO STA.		
FED. ROAD DIST. NO.		ILLINOIS FED. AID PROJECT		



NOTES:
 1. FOR PERMANENT STRUCTURE, PERMANENT PIPE AND SEDIMENT CONTROL INLET FILTER INFORMATION, SEE DRAINAGE SCHEDULES, SHEETS 169 TO 175.

LEGEND

- ◆ INLET FILTERS
- ◆ TEMPORARY DITCH CHECK
- ▨ TEMPORARY EROSION CONTROL SEEDING AND MULCH METHOD 2
- ▨ RIPRAP CLASS A3 & A4
- TEMPORARY SILT FENCE
- ➡ OUTLET
- ➡ SHEET FLOW

REVISIONS	
NAME	DATE

ILLINOIS DEPARTMENT OF TRANSPORTATION
 FAI ROUTE 55 (I-80 TO BLACK ROAD)
 WIDENING AND RESURFACING

**EROSION AND SEDIMENT CONTROL
 DETENTION BASINS**

SCALE: DATE 02/23/07 DRAWN BY MRK CHECKED BY TKL

TENG TENG & ASSOCIATES, INC.
 ENGINEERS/ARCHITECTS/PLANNERS
 CHICAGO, ILLINOIS

PLOT DATE # 02/23/07
 FILE NAME # EFILE19
 PLOT SCALE # 1"=50'
 USER NAME # MRSR