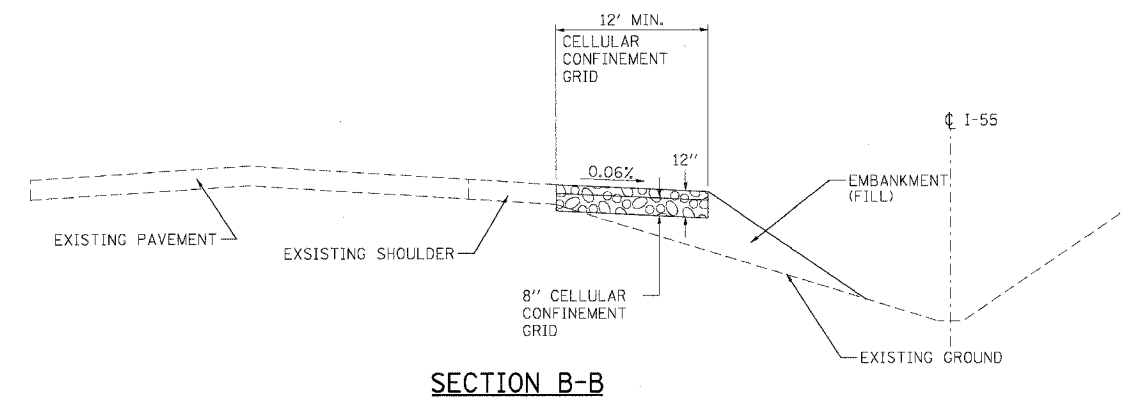
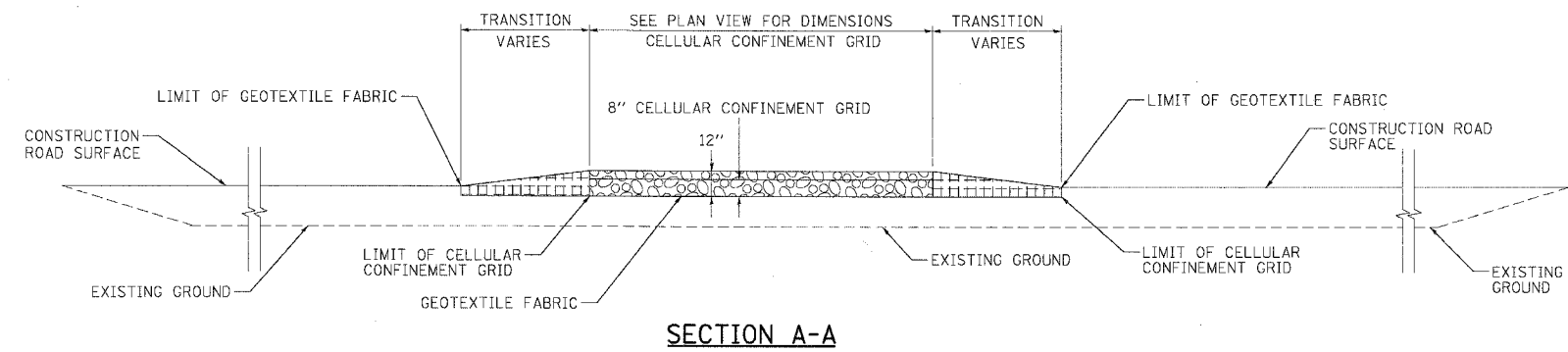
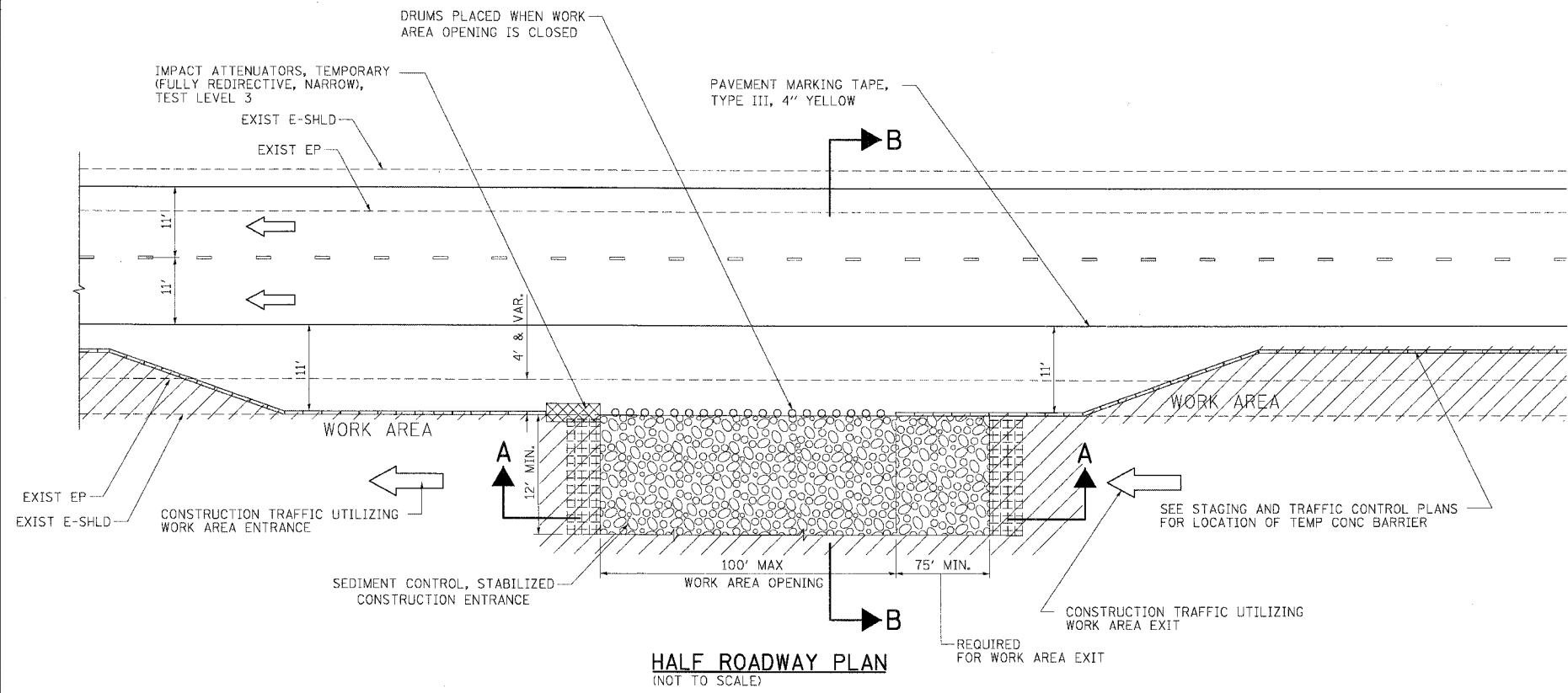
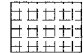

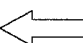
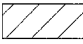



F.A.I. RTE.	SECTION	COUNTY	TOTAL SHEETS	SHEET NO.
55	99 (1&2) WRS	WILL	334	151
STA.	TO STA.			
FED. ROAD DIST. NO.	ILLINOIS	FED. AID PROJECT		



**LEGEND:**

-  COURSE AGGREGATE CA-3
-  SEDIMENT CONTROL, STABILIZED CONSTRUCTION ENTRANCE
-  DIRECTION OF TRAFFIC
-  WORK AREA
-  IMPACT ATTENUATOR

**NOTES:**

1. THE EXISTING BITUMINOUS SHOULDER SHALL REMAIN IN THE PLACE UNTIL THE STABILIZED CONSTRUCTION ENTRANCE IS REMOVED.
2. EXISTING DITCH DRAINAGE TO BE MAINTAINED.
3. THE COST OF ANY COURSE AGGREGATE CA-3 USED FOR TRANSITION FROM THE CONSTRUCTION ROAD TO THE STABILIZED CONSTRUCTION ENTRANCE WILL NOT BE PAID FOR SEPARATELY, BUT SHALL BE INCLUDED IN THE UNIT PRICE BID FOR "SEDIMENT CONTROL, STABILIZED CONSTRUCTION ENTRANCE".
4. SEE STAGING AND TRAFFIC CONTROL DETAIL FOR WORK AREA DRIVEWAY ENTRANCE/EXIT.
5. THE SEDIMENT CONTROL, STABILIZED CONSTRUCTION ENTRANCE DIMENSIONS SHALL BE APPROVED BY THE ENGINEER.

REVISIONS	
NAME	DATE

ILLINOIS DEPARTMENT OF TRANSPORTATION  
 FAI ROUTE 55 (I-80 TO BLACK ROAD)  
 WIDENING AND RESURFACING

**EROSION AND SEDIMENT CONTROL  
 DETAIL FOR STABILIZED CONSTRUCTION  
 ENTRANCE**

SCALE: N.T.S.      DRAWN BY JP  
 DATE 02/23/07      CHECKED BY DDH

**TENG**      TENG & ASSOCIATES, INC.  
 ENGINEERS/ARCHITECTS/PLANNERS  
 CHICAGO, ILLINOIS

PLOT DATE = 02/23/07  
 FILE NAME = 02FILEL08  
 PLOT SCALE = 0.500000  
 USER NAME = BUSCH08  
 S:\DOCUMENT\62895\CIVIL\WORK\62895\4801.DWG