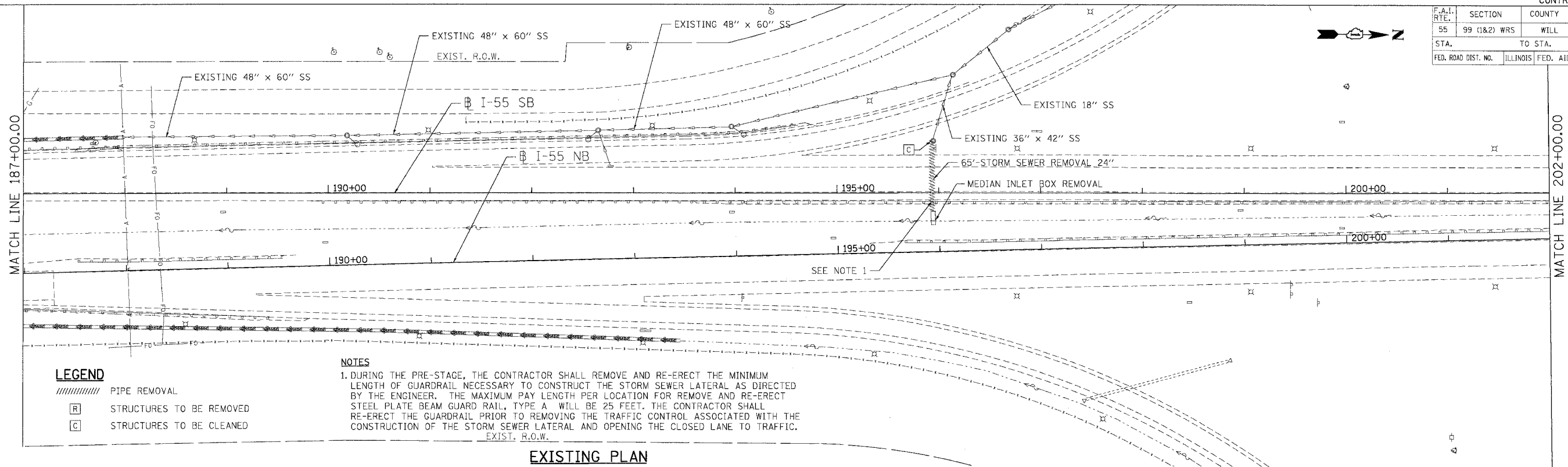


F.A.I. RTE.	SECTION	COUNTY	TOTAL SHEETS	SHEET NO.
55	99 (I&2) WRS	WILL	334	154
STA.		TO STA.		
FED. ROAD DIST. NO.		ILLINOIS FED. AID PROJECT		



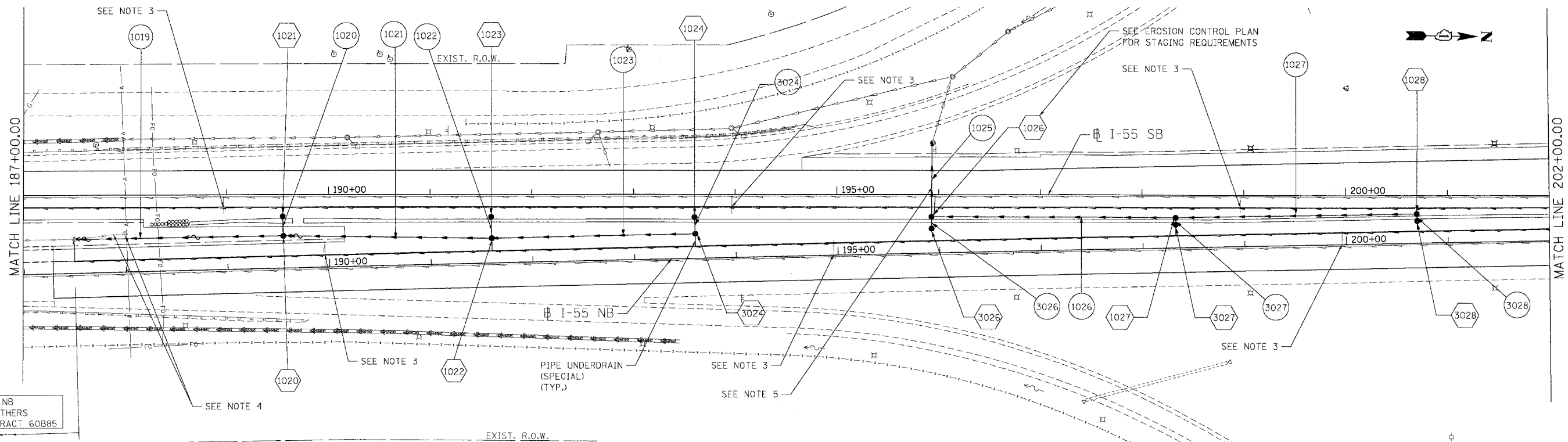
LEGEND

- ////// PIPE REMOVAL
- [R] STRUCTURES TO BE REMOVED
- [C] STRUCTURES TO BE CLEANED

NOTES

1. DURING THE PRE-STAGE, THE CONTRACTOR SHALL REMOVE AND RE-ERECT THE MINIMUM LENGTH OF GUARDRAIL NECESSARY TO CONSTRUCT THE STORM SEWER LATERAL AS DIRECTED BY THE ENGINEER. THE MAXIMUM PAY LENGTH PER LOCATION FOR REMOVE AND RE-ERECT STEEL PLATE BEAM GUARD RAIL, TYPE A, WILL BE 25 FEET. THE CONTRACTOR SHALL RE-ERECT THE GUARDRAIL PRIOR TO REMOVING THE TRAFFIC CONTROL ASSOCIATED WITH THE CONSTRUCTION OF THE STORM SEWER LATERAL AND OPENING THE CLOSED LANE TO TRAFFIC.

EXISTING PLAN



LEGEND

- (100) STRUCTURE NUMBER
- (100) GR GRATING FOR STRUCTURE
- (100) PIPE NUMBER
- STORM SEWER
- ~ PROPOSED DITCH
- CATCH BASIN
- MANHOLE
- ▲ FLARED END SECTION
- HEADWALL
- PIPE UNDERDRAINS

NOTES

1. FOR STRUCTURE AND PIPE INFORMATION SEE DRAINAGE SCHEDULES, SHEETS 169, 170, 171, 172, 173, 174 AND 175.
 2. PROPOSED SEWER AND CULVERT CROSSING BENEATH THE EXISTING PAVEMENT SHALL BE CONSTRUCTED DURING PRE-STAGE PER THE STAGING AND TRAFFIC CONTROL PLANS. SEE ROADWAY PLANS FOR PATCHING DETAILS.

3. CONNECT EXISTING PIPE UNDERDRAIN 6" TO PROPOSED PIPE UNDERDRAINS 6". THE COST FOR MAKING THE CONNECTIONS USING APPROVED FITTINGS IS TO BE INCLUDED IN THE COST OF PIPE UNDERDRAINS 6" (SPECIAL), (TYPICAL).
 4. PROPOSED 4'-DIA CATCH BASIN AND 18" STORM SEWER BUILT IN CONTRACT 60B85 TO BE REMOVED.
 5. STORM SEWER LATERALS SHALL BE INSTALLED PER THE STAGING AND TRAFFIC CONTROL TYPICAL SECTIONS FOR PRE-STAGE (SEE SHEET 111). THE CONTRACTOR SHALL BEGIN CONSTRUCTION OF THIS STORM SEWER LATERAL WHEN PRECIPITATION IS NOT INCLUDED IN THE NATIONAL OCEANIC AND ATMOSPHERIC ADMINISTRATION'S NATIONAL WEATHER SERVICE FORECAST FOR THE 48 HOUR PERIOD FOLLOWING THE START OF CONSTRUCTION OF THIS STORM SEWER LATERAL (HTTP://WWW.NWS.NOAA.GOV). PRE-STAGE, PHASE II SHALL BE COMPLETED WITHIN 36 HOURS OF COMPLETING PRE-STAGE, PHASE I FOR THIS STORM SEWER LATERAL.

PROPOSED PLAN

REVISIONS	
NAME	DATE

ILLINOIS DEPARTMENT OF TRANSPORTATION
 FAI ROUTE 55 (I-80 TO BLACK ROAD)
 WIDENING AND RESURFACING
DRAINAGE AND UTILITY PLAN
 FAI 55
 STA. 187+00.00 TO STA. 202+00.00
 SCALE: 1"=50'
 DATE: 03/15/07
 DRAWN BY: MRK
 CHECKED BY: TKL
TENG
 TENG & ASSOCIATES, INC.
 ENGINEERS/ARCHITECTS/PLANNERS
 CHICAGO, ILLINOIS

PLOT DATE = 03/15/07
 FILE NAME = I:\PROJECTS\62895\DRG\62895_154.DWG
 USER NAME = TENG
 USER DATE = 03/15/07