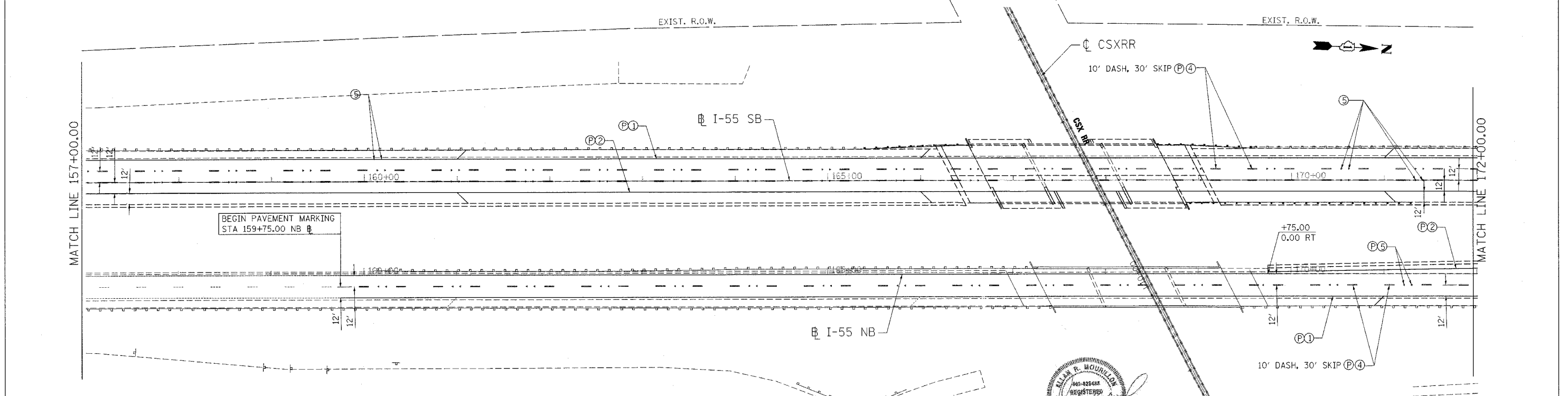
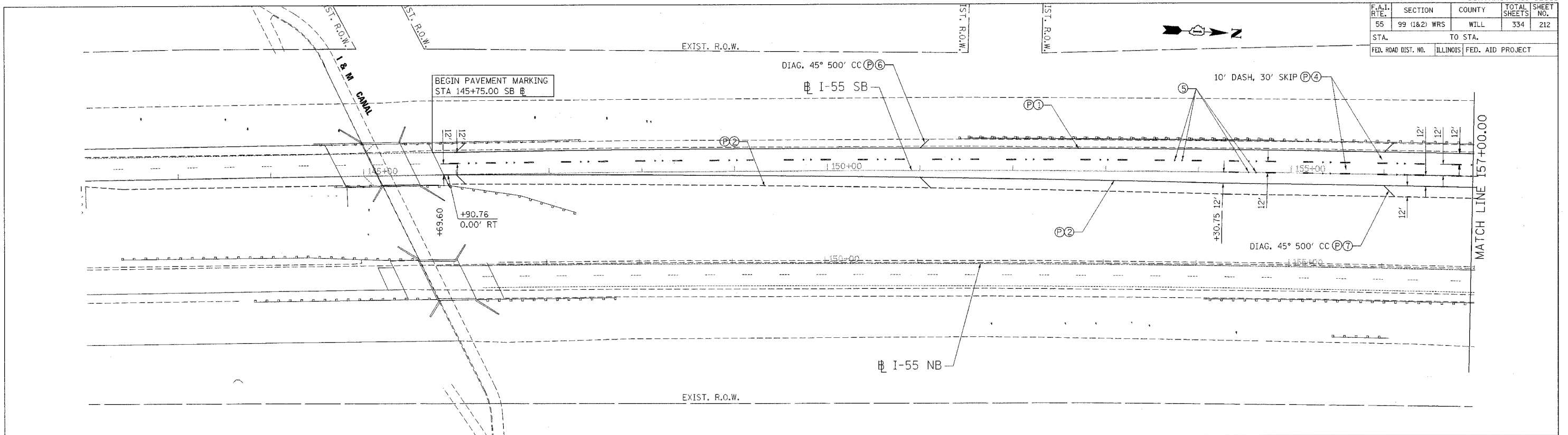


PLOT DATE = 03/22/07  
 FILE NAME = 032207.DWG  
 USER NAME = MUSEBA

F.A.I. RTE.	SECTION	COUNTY	TOTAL SHEETS	SHEET NO.
55	99 (I&2) WRS	WILL	334	212
STA.		TO STA.		
FED. ROAD DIST. NO.		ILLINOIS FED. AID PROJECT		

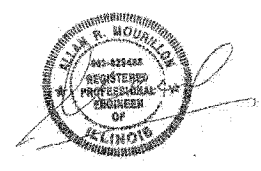


**PAVEMENT MARKING LEGEND**

- |                                     |  |                             |
|-------------------------------------|--|-----------------------------|
| ① PAVEMENT MARKING LINE 4" (WHITE)  | ⑥ PAVEMENT MARKING LINE 12" (WHITE)  | Ⓣ THERMOPLASTIC (EXTRUDED)  |
| ② PAVEMENT MARKING LINE 4" (YELLOW) | ⑦ PAVEMENT MARKING LINE 12" (YELLOW)   | Ⓟ POLYUREA                  |
| ③ PAVEMENT MARKING LINE 8" (WHITE)  | ⑧ RAISED REFLECTIVE PAVEMENT MARKER (SINGLE, ONE-WAY, CRYSTAL MARKERS @ 40' C-C) | Ⓡ PREFORMED PLASTIC, TYPE B |
| ④ PAVEMENT MARKING LINE 5" (WHITE)  | ⑨ RAISED REFLECTIVE PAVEMENT MARKER (DOUBLE, ONE-WAY, CRYSTAL MARKERS @ 80' C-C) |                             |

**LANDSCAPING LEGEND**

- |  |  |
|--|--|
|  | SEEDING CLASS 2A WITH TOPSOIL FURNISH AND PLACE, 6" AND EROSION CONTROL BLANKET    |
|  | SEEDING CLASS 4 WITH COMPOST FURNISH AND PLACE, 4" AND EROSION CONTROL BLANKET     |
|  | SEEDING, CLASS 4B (MODIFIED) WITH COMPOST FURNISH AND PLACE, 4" AND MULCH METHOD 2 |



DATE 2/15/2007  
 EXP. 11/30/2007

**MORCOM, N.V., INC.**  
 CONSULTING ENGINEERS  
 CHICAGO, ILLINOIS

REVISIONS	
NAME	DATE

ILLINOIS DEPARTMENT OF TRANSPORTATION  
 FAI ROUTE 55 (I-80 TO BLACK ROAD)  
 WIDENING AND RESURFACING  
**PAVEMENT MARKING AND LANDSCAPING**  
**FAI 55**  
**STA. 142+00.00 TO STA. 172+00.00**  
 SCALE: 1"=50'  
 DATE 03/22/07  
 DRAWN BY MW  
 CHECKED BY DDH  
**TENG**  
 TENG & ASSOCIATES, INC.  
 ENGINEERS/ARCHITECTS/PLANNERS  
 CHICAGO, ILLINOIS