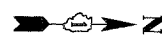
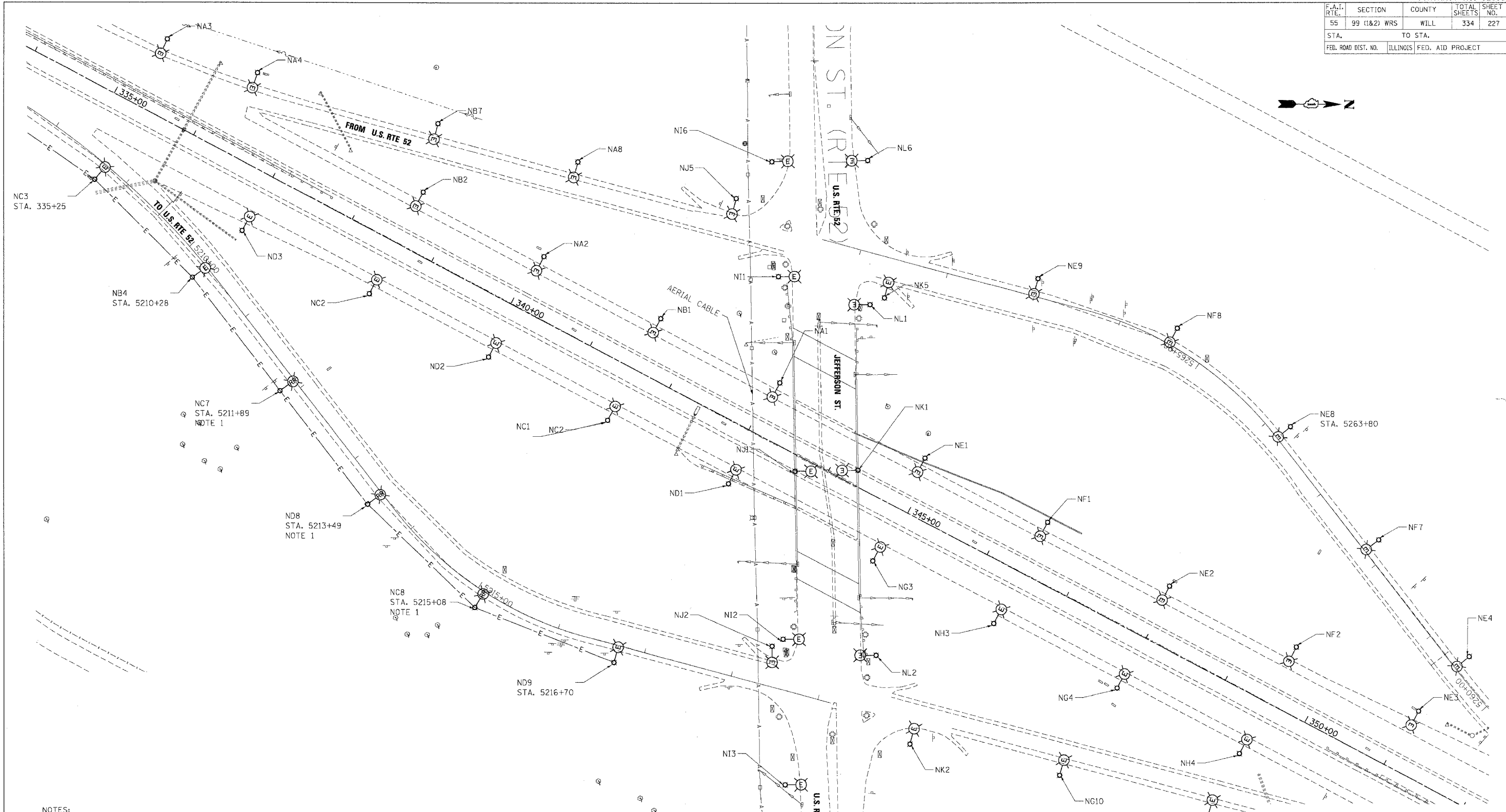


F.A.I. RTE.	SECTION	COUNTY	TOTAL SHEETS	SHEET NO.
55	99 (I&2) WRS	WILL.	334	227
STA.		TO STA.		
FED. ROAD DIST. NO.		ILLINOIS	FED. AID PROJECT	



- NOTES:
- CONTRACTOR SHALL DISCONNECT EXISTING POLE AND LUMINAIRE FOR REMOVAL AND RELOCATION. CONTRACTOR SHALL REMOVE EXISTING LIGHT POLE FOUNDATION.
 - CONTRACTOR SHALL REMOVE EXISTING UNIT DUCT AND WIRING FROM POLE NB4 TO NC7, FROM POLE NC7 TO ND8, FROM POLE ND8 TO POLE NC8, AND FROM POLE NC8 TO POLE ND9.

REVISIONS	
NAME	DATE

ILLINOIS DEPARTMENT OF TRANSPORTATION
 I-55 (I-80 TO BLACK ROAD)
 WIDENING AND RESURFACING

**EXISTING LIGHTING PLAN
 US 52 @ I-55**

SCALE: 1"=50'
 DATE: 02/23/07
 DRAWN BY: MMP
 CHECKED BY: JWO

TENG TENG & ASSOCIATES, INC.
 ENGINEERS/ARCHITECTS/PLANNERS
 CHICAGO, ILLINOIS

PLOT DATE = 02/23/07
 PLOT NAME = I-55 @ US 52
 PLOT SCALE = 1"=50'
 USER NAME = JWS