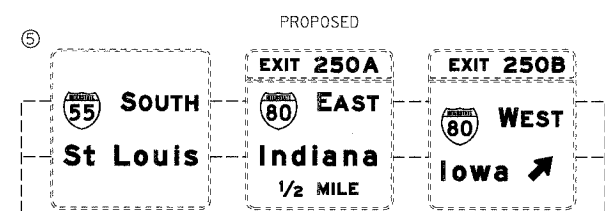
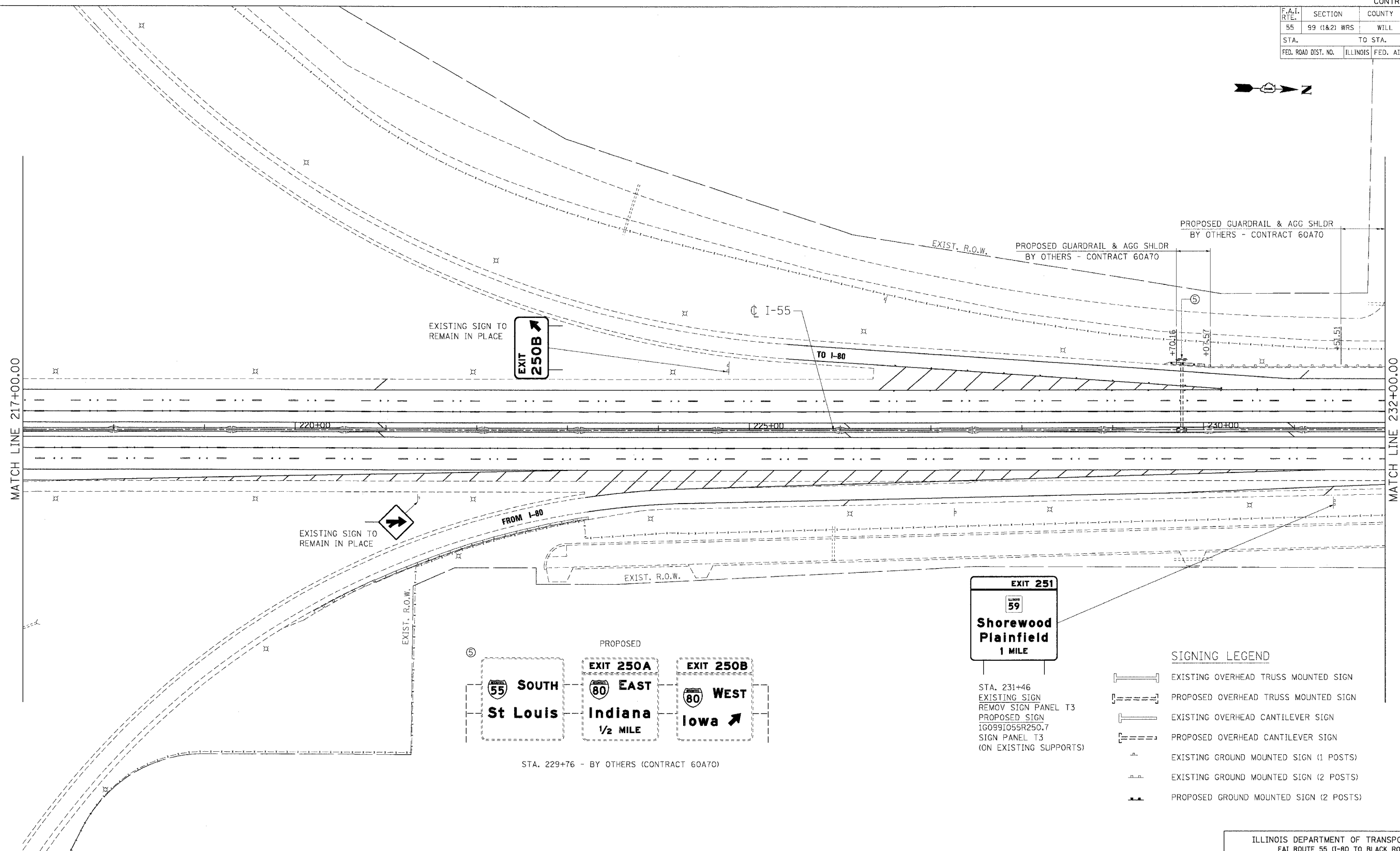
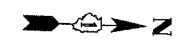


F.A.I. RTE.	SECTION	COUNTY	TOTAL SHEETS	SHEET NO.
55	99 (1&2) WRS	WILL	334	237
STA.		TO STA.		
FED. ROAD DIST. NO.	ILLINOIS	FED. AID PROJECT		



STA. 231+46  
EXISTING SIGN  
REMOV SIGN PANEL T3  
PROPOSED SIGN  
1G0991055R250.7  
SIGN PANEL T3  
(ON EXISTING SUPPORTS)

**SIGNING LEGEND**

- EXISTING OVERHEAD TRUSS MOUNTED SIGN
- PROPOSED OVERHEAD TRUSS MOUNTED SIGN
- EXISTING OVERHEAD CANTILEVER SIGN
- PROPOSED OVERHEAD CANTILEVER SIGN
- EXISTING GROUND MOUNTED SIGN (1 POSTS)
- EXISTING GROUND MOUNTED SIGN (2 POSTS)
- PROPOSED GROUND MOUNTED SIGN (2 POSTS)

REVISIONS	
NAME	DATE

ILLINOIS DEPARTMENT OF TRANSPORTATION  
FAI ROUTE 55 (I-80 TO BLACK ROAD)  
WIDENING AND RESURFACING

**SIGNING PLAN**  
FAI 55  
STA. 217+00.00 TO STA. 232+00.00

SCALE: 1"=50' DRAWN BY MW  
DATE 02/23/07 CHECKED BY DDH

**TENG** TENG & ASSOCIATES, INC.  
ENGINEERS/ARCHITECTS-PLANNERS  
CHICAGO, ILLINOIS

PLOT DATE = 02/23/07  
 FILE NAME = 022307.DWG  
 PLOT SCALE = 1/4"=1'-0"  
 USER NAME = JWB