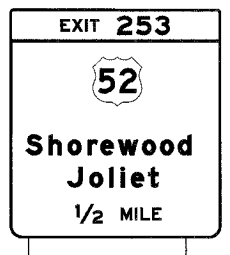
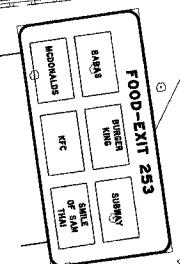
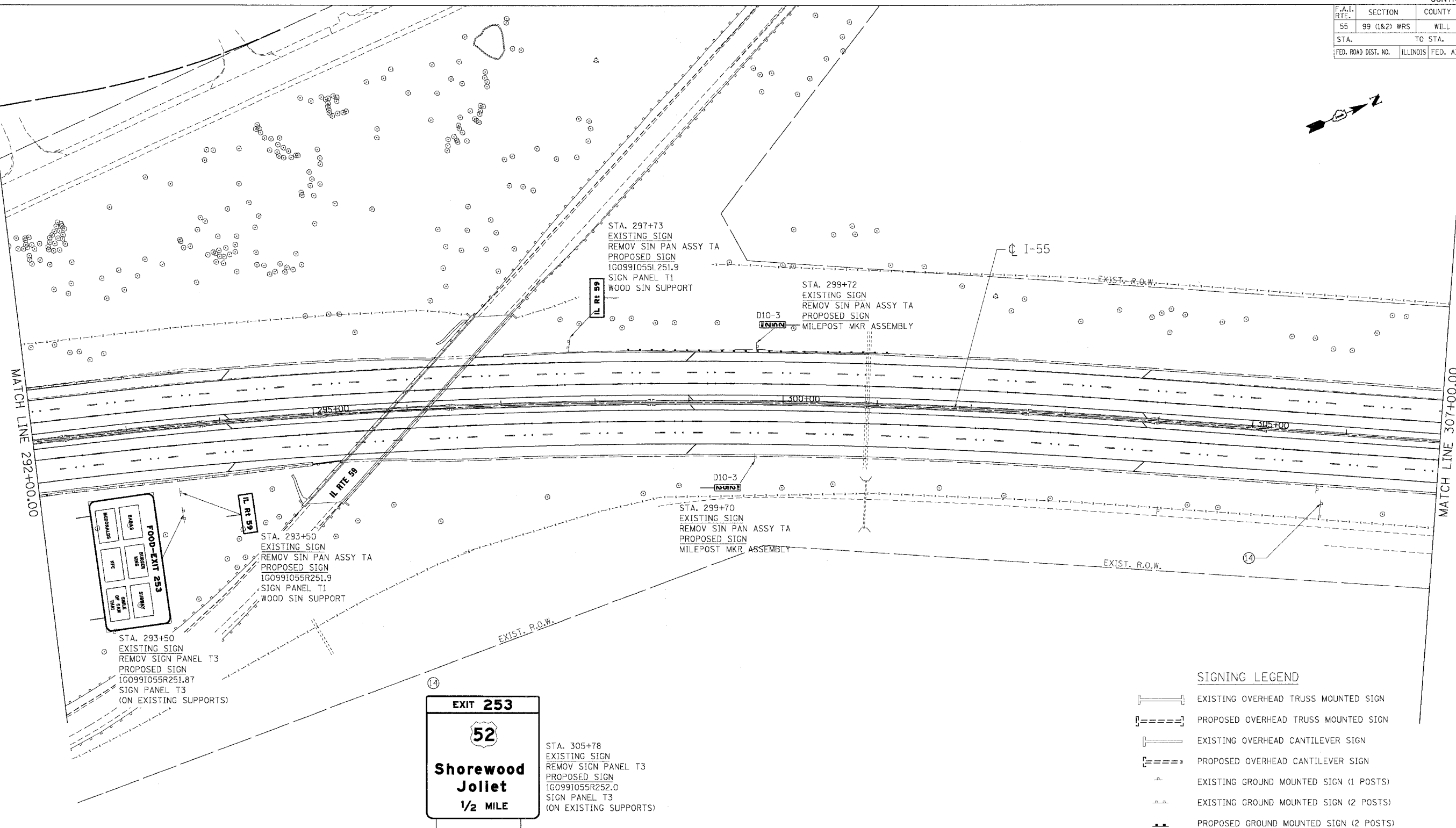


F.A.I. RTE.	SECTION	COUNTY	TOTAL SHEETS	SHEET NO.
55	99 (1&2) WRS	WILL	334	242
STA.		TO STA.		
FED. ROAD DIST. NO.		ILLINOIS	FED. AID PROJECT	



**SIGNING LEGEND**

- EXISTING OVERHEAD TRUSS MOUNTED SIGN
- PROPOSED OVERHEAD TRUSS MOUNTED SIGN
- EXISTING OVERHEAD CANTILEVER SIGN
- PROPOSED OVERHEAD CANTILEVER SIGN
- EXISTING GROUND MOUNTED SIGN (1 POSTS)
- EXISTING GROUND MOUNTED SIGN (2 POSTS)
- PROPOSED GROUND MOUNTED SIGN (2 POSTS)

REVISIONS	
NAME	DATE

ILLINOIS DEPARTMENT OF TRANSPORTATION  
 FAI ROUTE 55 (I-80 TO BLACK ROAD)  
 WIDENING AND RESURFACING

**SIGNING PLAN**  
 FAI 55  
 STA. 292+00.00 TO STA. 307+00.00

SCALE: 1"=50'  
 DATE: 02/23/07  
 DRAWN BY: MW  
 CHECKED BY: DDH

**TENG**  
 TENG & ASSOCIATES, INC.  
 ENGINEERS/ARCHITECTS/PLANNERS  
 CHICAGO, ILLINOIS

PLOT DATE = 02/23/07  
 FILE NAME = 022307  
 PLOT SCALE = 1/8"=1'-0"  
 USER NAME = 022307