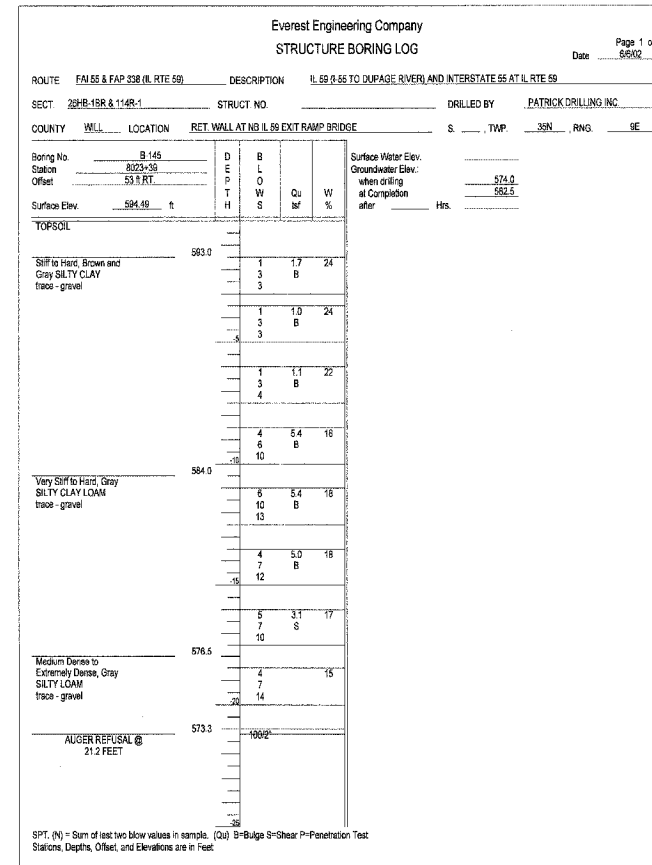
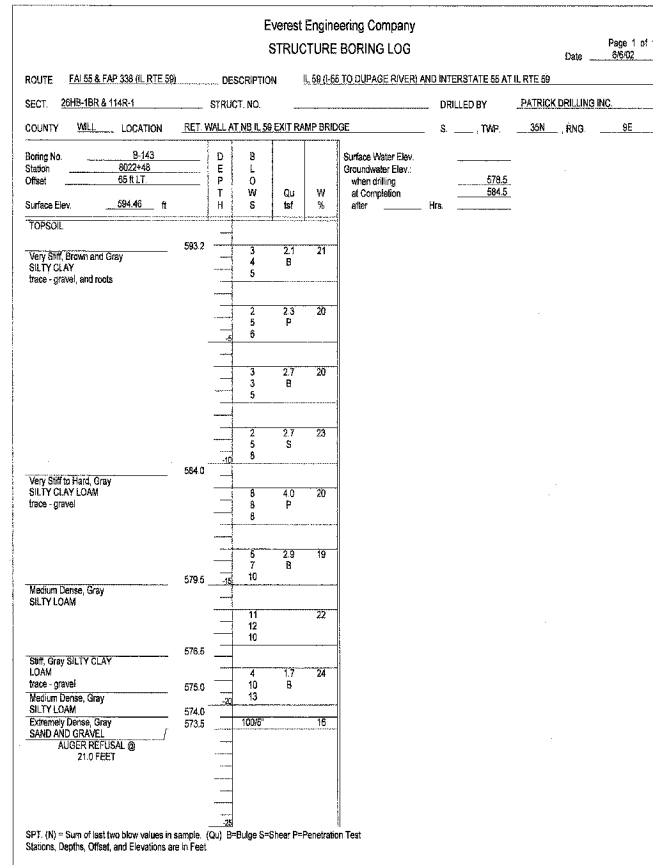
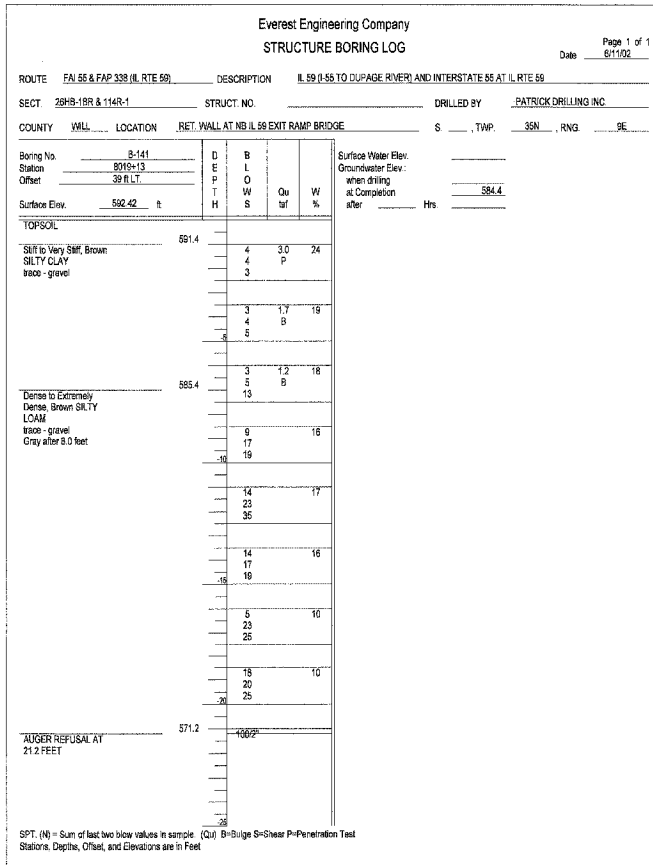
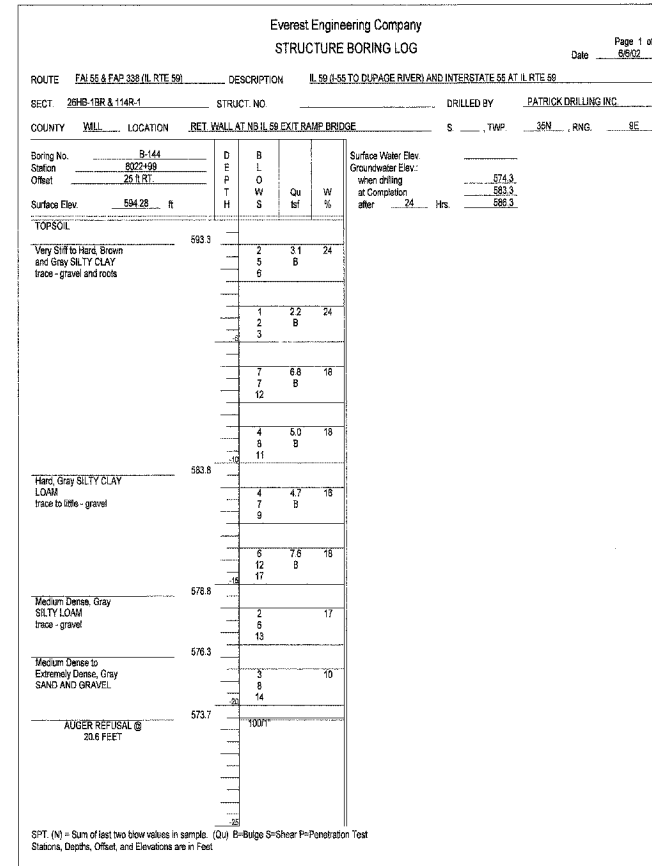
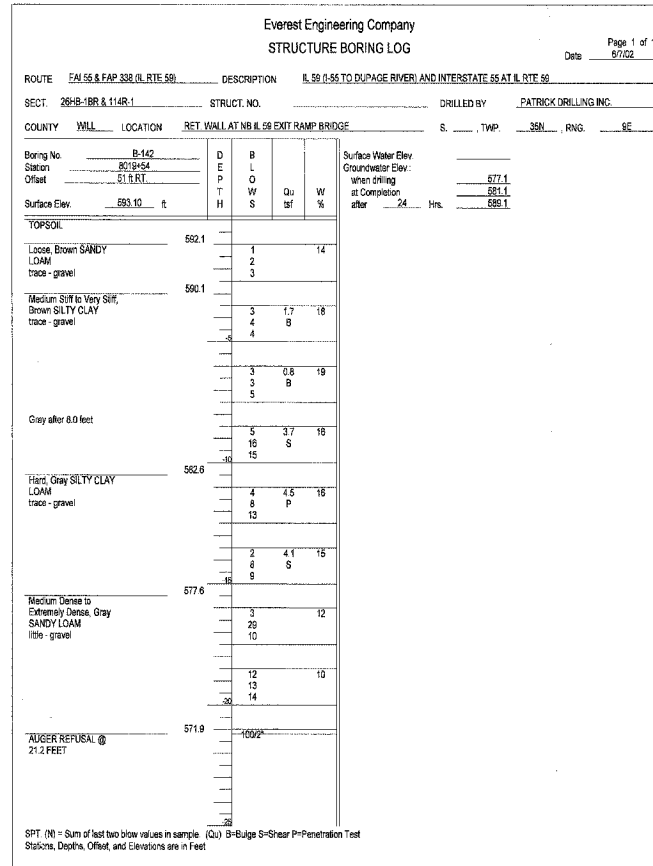
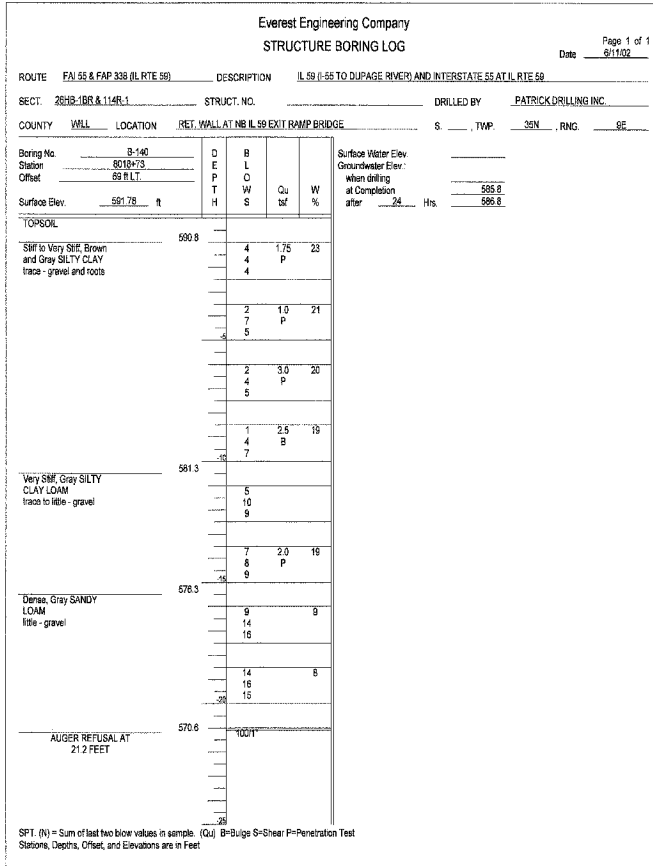


F.A.I. RTE.	SECTION	COUNTY	TOTAL SHEETS	SHEET NO.
55	99 (1&2) WRS	WILL	334	262
STA.		TO STA.		
FED. ROAD DIST. NO.		ILLINOIS	FED. AID PROJECT	



ELEVATIONS SHOWN ON SHEETS 257 THRU 262 ARE BASED ON NGVD 29 VERTICAL DATUM, WHILE ALL OTHER CONTRACT 62895 ELEVATIONS ARE BASED ON NAVD 88 VERTICAL DATUM. ELEVATIONS SHOWN ON SHEETS 257 THRU 262 MUST BE CONVERTED TO NAVD 88 VERTICAL DATUM BY SUBTRACTING 0.31 FEET FROM ELEVATIONS DENOTED.

FOR EXAMPLE:
ON SHT. 257 L&E BRG. PIER, STA. 8021+09.68, EL. 623.44 (NGVD 29)
CONVERT: EL. 623.44 (NGVD 29)
- 0.31
EL. 623.13 (NAVD 88)
USE EL. 623.13

SHT. 6 OF 6

REVISIONS	
NAME	DATE

ILLINOIS DEPARTMENT OF TRANSPORTATION
FAI ROUTE 55 (I-80 TO BLACK ROAD)
WIDENING AND RESURFACING
IL ROUTE 59 OVER I-55, S.N. 099-4642
STA. 8021+17.13, SECTION 26HB-1BR & 114R-1
WILL COUNTY

BORING LOGS 2

SCALE: DATE 02/23/07 DRAWN BY GS CHECKED BY TMH

TENG TENG & ASSOCIATES, INC. ENGINEERS/ARCHITECTS/PLANNERS CHICAGO, ILLINOIS

FILE NAME = BDL02Y05JON...
 PLOT SCALE = 1/8"=1'-0"
 USER NAME = JUSER