

F.A.I. RTE.	SECTION	COUNTY	TOTAL SHEETS	SHEET NO.
55	99 (1&2) WRS	WILL	334	263
STA.		TO STA.		
FED. ROAD DIST. NO.	ILLINOIS	FED. AID PROJECT		

BAR LIST

Bar	No.	Size	Length	Shape
d(E)	44	#5	2'-1"	
h(E)	16	#4	16'-3"	
s(E)	34	#4	7'-5"	

TOTAL BILL OF MATERIAL

Item	Unit	Total
Concrete Structures	Cu Yd	4.6
Reinforcement Bars, Epoxy Coated	Lb	440
** Concrete Sealer	Sq Ft	183

** Quantity includes top and side surfaces of new concrete.

GENERAL NOTES

1. Plan dimensions and details relative to existing structure have been taken from existing plans and are subject to nominal construction variations. It shall be the Contractor's responsibility to verify such dimensions and details in the field and make necessary approved adjustments prior to construction or ordering of materials. Such variations shall not be cause for additional compensation for a change in the scope of the work; however, the Contractor will be paid for the quantity actually furnished at the unit price for the work.
2. All construction joints shall be bonded.



DATE 11/30/07
EXP. 11/30/08

ILLINOIS DEPARTMENT OF TRANSPORTATION
FAI ROUTE 55 (I-80 TO BLACK ROAD)
WIDENING AND RESURFACING
IL ROUTE 59 OVER I-55, S.N. 099-0030
STA. 140+25.25, SECTION 99 (1&2) WRS
WILL COUNTY

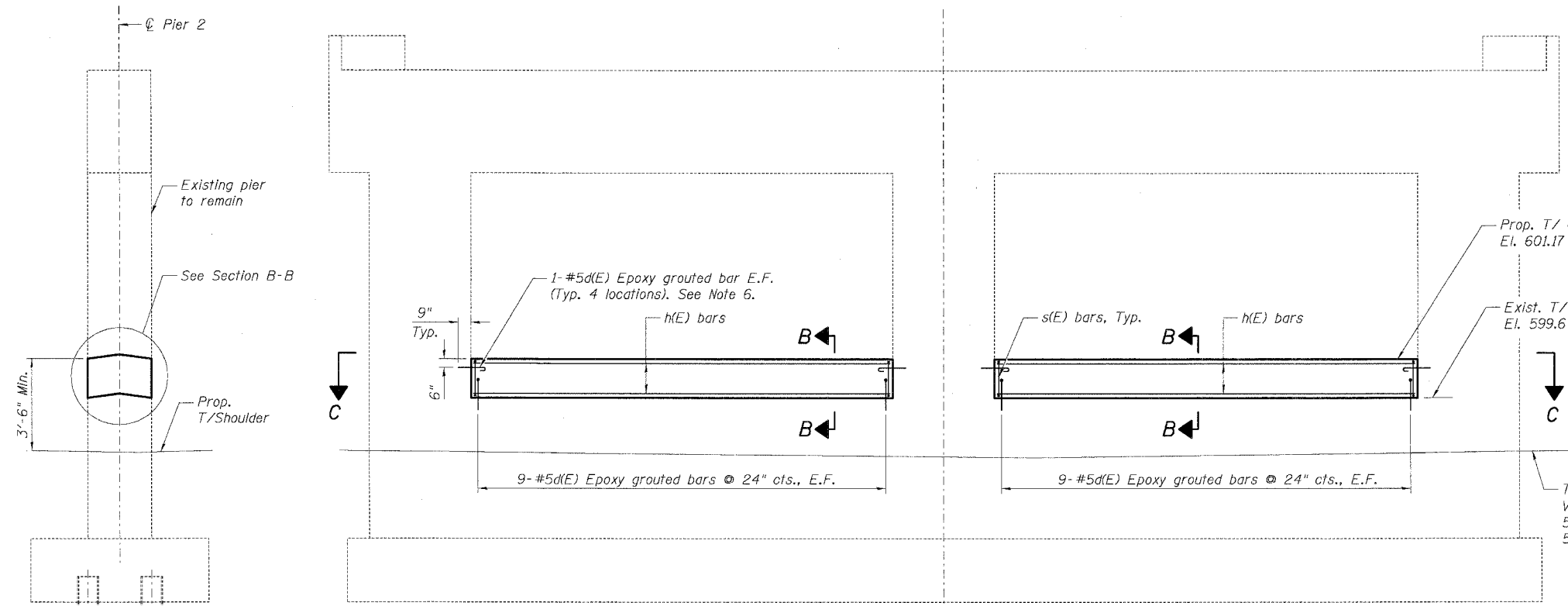
PIER 2

SCALE: DATE 02/23/07 DRAWN BY PA CHECKED BY MJK
TENG TENG & ASSOCIATES, INC.
ENGINEERS/ARCHITECTS/PLANNERS
CHICAGO, ILLINOIS

SHT. 1 OF 1

REVISIONS	
NAME	DATE

MORCOM, N.V., INC.
CONSULTING ENGINEERS
CHICAGO, ILLINOIS

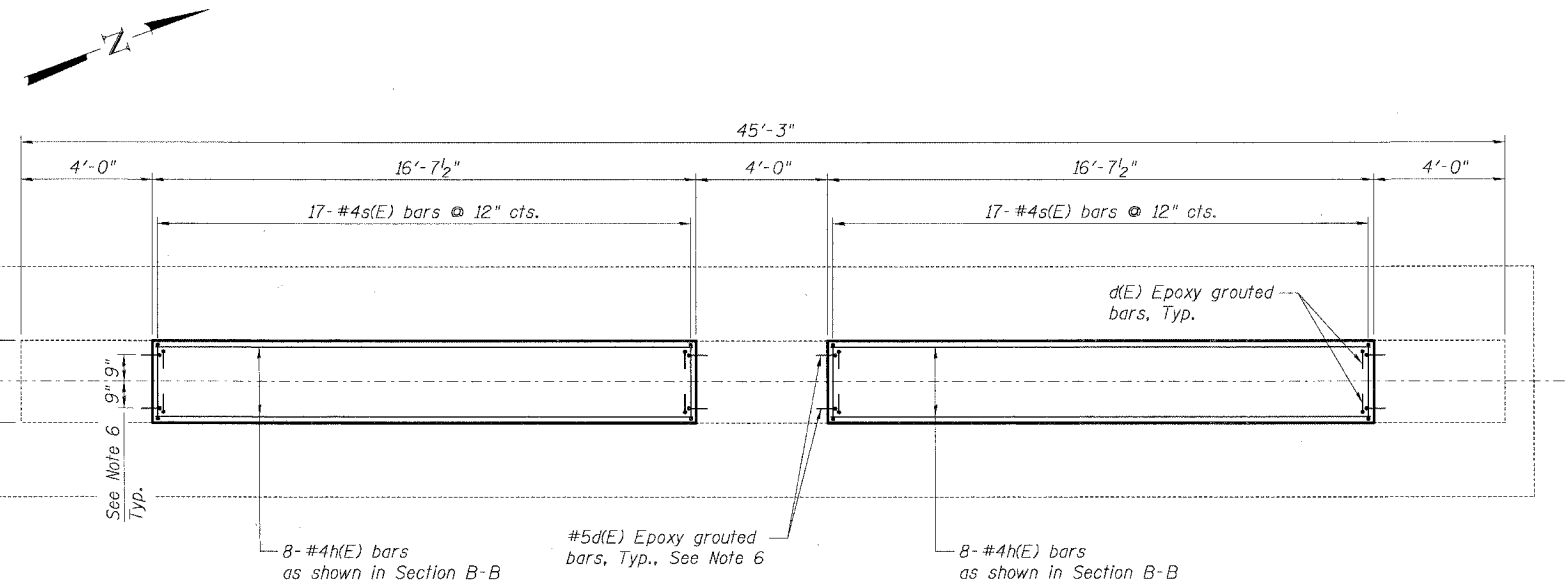


PIER 2 ELEVATION

(Looking East, West Elev. Similar)

TYPICAL SECTION

See Section B-B



PLAN SECTION C-C

Notes:

1. E.F. denotes Each Face.
2. All edges shall have 3/4" chamfer unless noted otherwise.
3. Bars designated (E) shall be epoxy coated.
4. Minimum embedment depth of 9" shall be provided for epoxy grouted bars.
5. Epoxy grouted bars shall be in accordance with Article 584 of the Standard Specifications. Cost included with Reinforcement Bars, Epoxy Coated.
6. Contractor shall ensure that vertical bars in pier columns are not damaged. Any damage to existing vertical bars in pier columns shall be repaired. Repairs shall be made as directed by the Engineer.

PLOT DATE = 02/23/07
FILE NAME = 022307.DWG
PLOT SCALE = AS CALLED
USER NAME = mjw