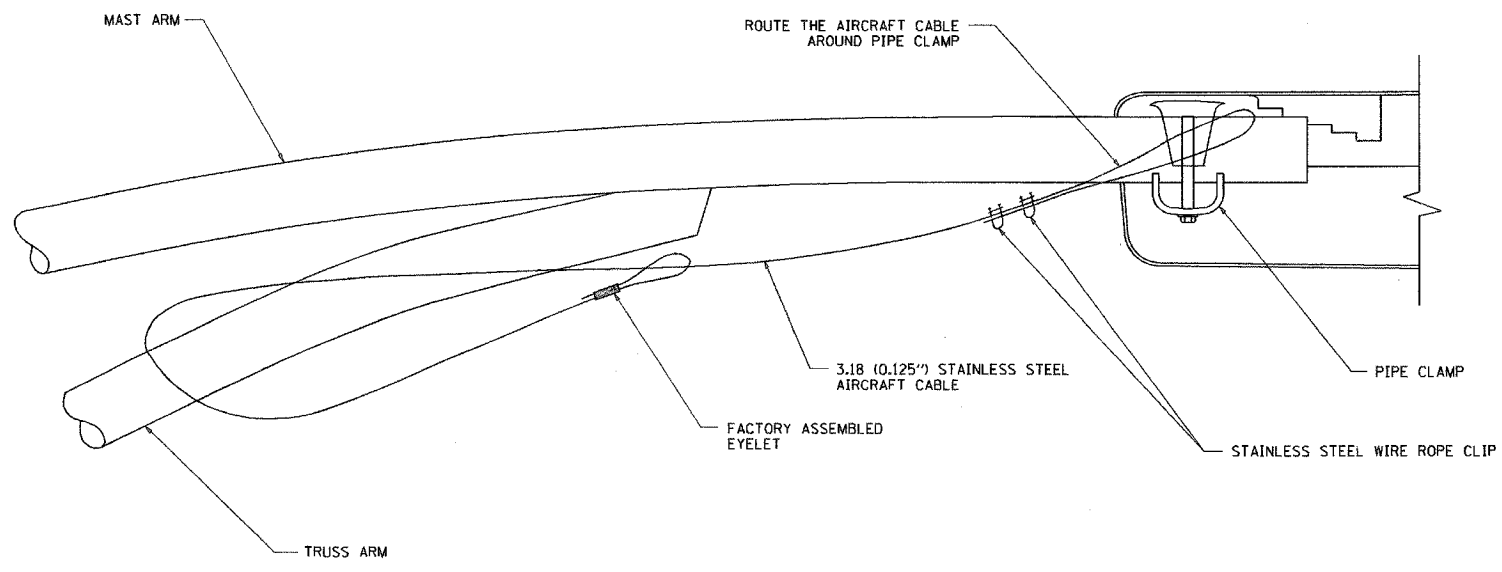
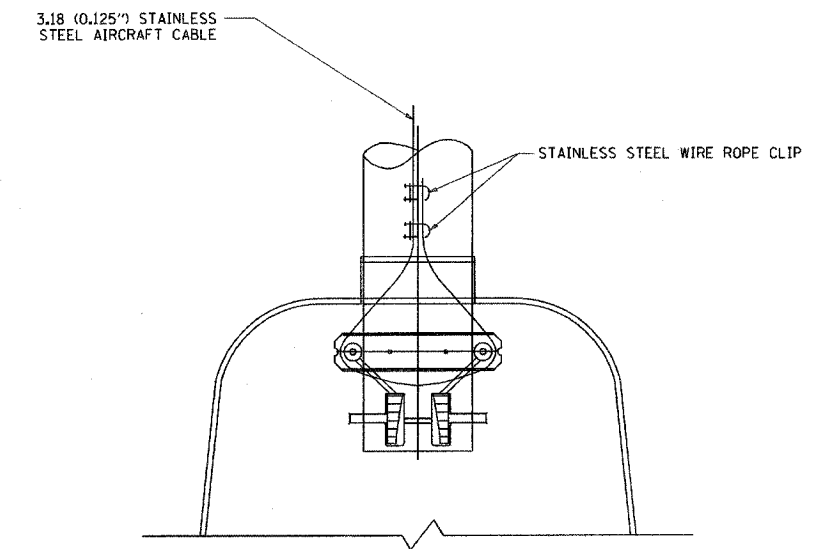


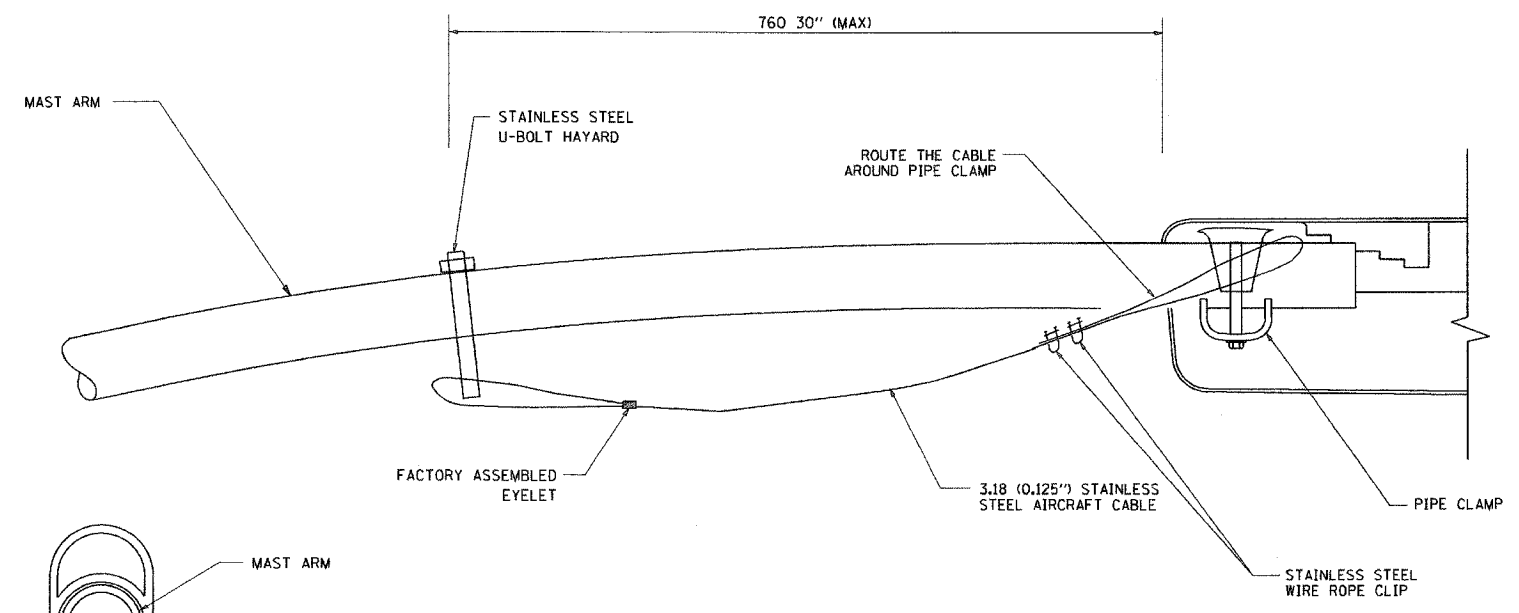
F.A. RTE.	SECTION	COUNTY	TOTAL SHEETS	SHEET NO.
55	99(12) WRS	WILL	334	271
STA.	TO STA.			
FED. ROAD DIST. NO.	ILLINOIS FED. AID PROJECT			



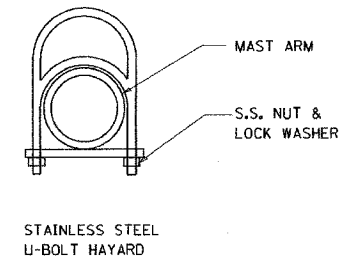
SIDE VIEW (TRUSS ARM)  
N.T.S.



BOTTOM VIEW  
N.T.S.



SIDE VIEW (SINGLE MEMBER OR DAVIT ARM)  
N.T.S.



- NOTES:
1. ALL DIMENSIONS ARE IN MILLIMETERS (INCHES) UNLESS OTHERWISE SHOWN
  2. CONTRACTOR SHALL ADJUST THE WIRE CLIP TO ELIMINATE ANY SLACK FROM THE WIRE ROPE.
  3. THE 3.18 (0.125") STAINLESS STEEL AIRCRAFT CABLE SHALL REMAIN VISIBLE FROM THE GROUND LEVEL.
  4. THE BREAKING STRENGTH OF THE CABLE SHALL BE 1700 LBS. MIN

REVISIONS	
NAME	DATE

ILLINOIS DEPARTMENT OF TRANSPORTATION

LUMINAIRE SAFETY CABLE ASSEMBLY

SCALE: VERT. HORIZ. DATE: 2/15/2006

DRAWN BY CHECKED BY

BE-701 REVISION DATE:

PLOT DATE = 2/15/2006  
 PLOT SCALE = 50.000 / IN.  
 USER NAME = gplienrob