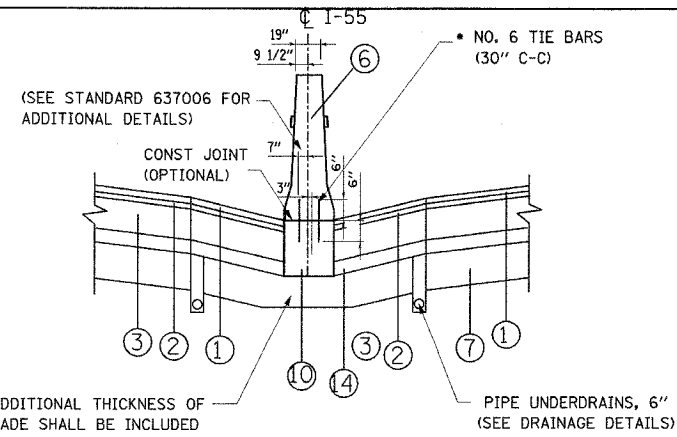
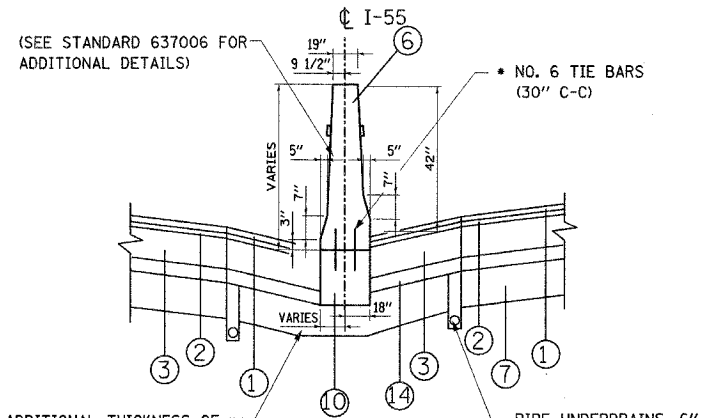


F.A.I. RTE.	SECTION	COUNTY	TOTAL SHEETS	SHEET NO.
55	99 (1&2) WRS-1	WILL	227	15
STA.		TO STA.		
FED. ROAD DIST. NO.		ILLINOIS FED. AID PROJECT		
		TYP 05 OF 06		



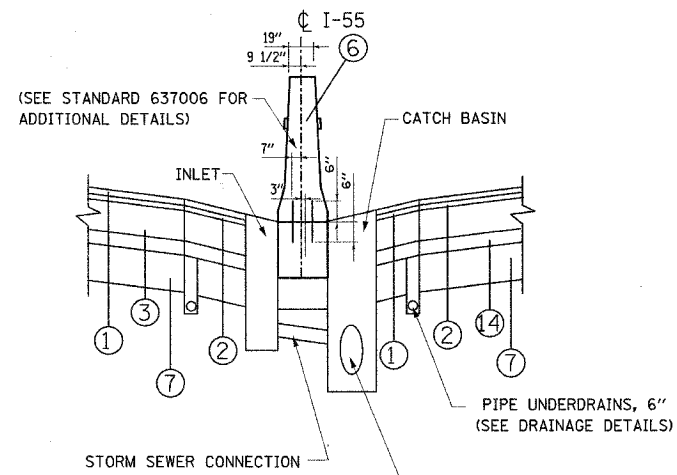
MEDIAN DETAIL A
TYPICAL CONCRETE BARRIER

COST OF ADDITIONAL THICKNESS OF AGG SUBGRADE SHALL BE INCLUDED IN CONTRACT UNIT COST FOR "AGGREGATE SUBGRADE, 12"

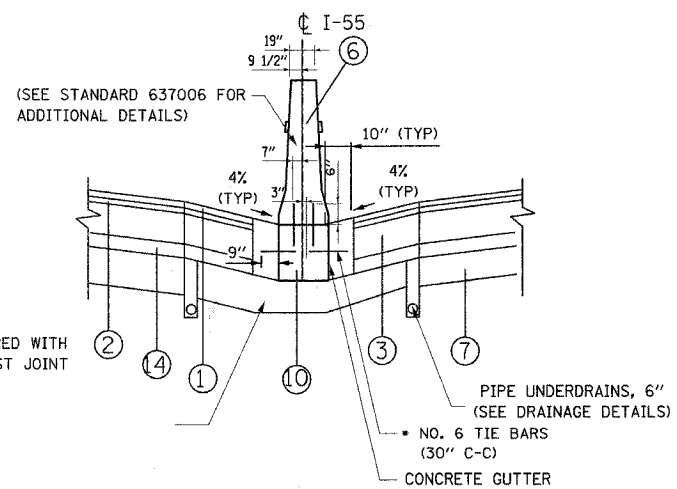


MEDIAN DETAIL B
TYPICAL CONCRETE BARRIER (VARIABLE HEIGHT)

COST OF ADDITIONAL THICKNESS OF AGG SUBGRADE SHALL BE INCLUDED IN CONTRACT UNIT COST FOR "AGGREGATE SUBGRADE, 12"



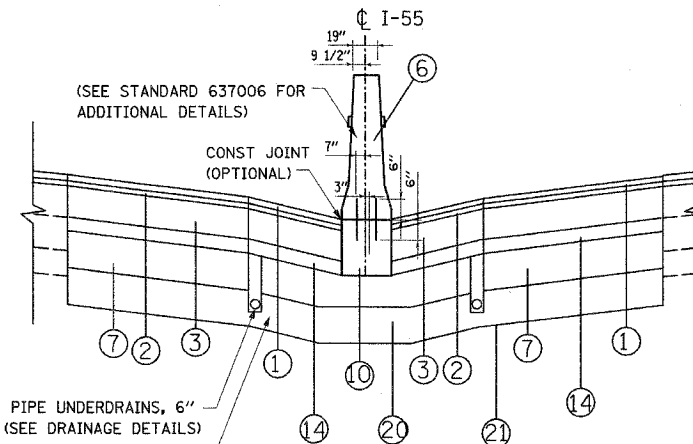
MEDIAN DETAIL C
TYPICAL CONCRETE BARRIER W/ INLET AND CATCH BASIN



MEDIAN DETAIL E
TYPICAL CONCRETE BARRIER W/ CONCRETE GUTTER

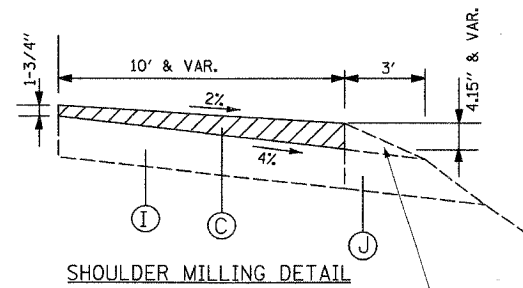
* ONLY REQUIRED WITH OPTIONAL CONST JOINT

* TIE BARS ARE ONLY REQUIRED WITH OPTIONAL CONSTRUCTION JOINT. THE BARS WILL NOT BE PAID FOR SEPARATELY, BUT SHALL BE INCLUDED IN THE CONTRACT UNIT PRICE FOR "CONCRETE BARRIER BASE"

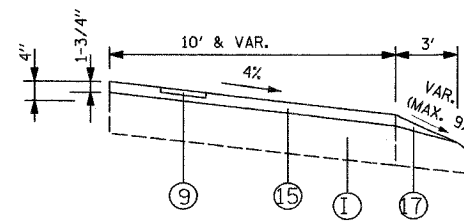


MEDIAN DETAIL D
MEDIAN DETAIL WITH PROPOSED UNDERCUT

COST OF ADDITIONAL THICKNESS OF AGG SUBGRADE SHALL BE INCLUDED IN CONTRACT UNIT COST FOR "AGGREGATE SUBGRADE, 12"



SHOULDER MILLING DETAIL



SHOULDER DETAIL

REMOVE EXIST AGGREGATE SHLDR THE COST OF THIS WORK SHALL BE INCLUDED IN THE CONTRACT UNIT PRICE FOR "HOT-MIX ASPHALT SURFACE REMOVAL, VARIABLE DEPTH"

NOTES:

- SUB-BASE GRANULAR MATERIAL, TYPE B SHALL BE CONSTRUCTED IN ACCORDANCE WITH ARTICLES 311.02, 311.03, AND 311.05 OF THE STANDARD SPECIFICATIONS. HIS WORK WILL BE MEASURED AND PAID FOR AS TRENCH BACKFILL IN ACCORDANCE WITH ARTICLES 208.03 AND 208.04 OF THE STANDARD SPECIFICATIONS.

EXISTING

- (A) BITUMINOUS CONCRETE SHOULDER REMOVAL
- (B) HOT-MIX ASPHALT SURFACE REMOVAL, 3 1/2"
- (C) HOT-MIX ASPHALT SURFACE REMOVAL, VARIABLE DEPTH
- (D) POLYMERIZED BITUMINOUS CONCRETE PAVEMENT
- (E) PAVEMENT REMOVAL
- (F) P.C.C. PAVEMENT
- (G) SUB-BASE GRANULAR MATERIAL
- (H) HOT-MIX ASPHALT BASE COURSE
- (I) BITUMINOUS CONCRETE SHOULDER
- (J) AGGREGATE SHOULDER
- (K) GUARDRAIL
- (L) AGGREGATE SUBGRADE
- (M) HOT-MIX ASPHALT BINDER COURSE
- (N) CONCRETE BARRIER

PROPOSED

- (1) POLYMERIZED HOT-MIX ASPHALT SURF. CSE, STONE MATRIX ASPH., N80, 1-3/4"
- (2) POLYMERIZED HOT-MIX ASPHALT BIND. CSE, STONE MATRIX ASPH., N80, 1-3/4"
- (3) HOT-MIX ASPHALT BASE COURSE, 8"
- (4) HOT-MIX ASPHALT BINDER COURSE, IL-19, N70, 8"
- (5) P.C.C. CONCRETE BASE COURSE, 10-1/2"
- (6) CONCRETE BARRIER, DOUBLE FACE, 42" HEIGHT
- (7) AGGREGATE SUBGRADE, 12"
- (8) SUB-BASE GRANULAR MATERIAL, TYPE B, 6"
- (9) SHOULDER RUMBLE STRIP
- (10) CONCRETE BARRIER BASE
- (11) LONGITUDINAL CONSTRUCTION JOINT AND NO. 25 EPOXY COATED DEFORMED TIE BARS (DRILL AND GROUT)
- (12) AGGREGATE SHOULDERS, TYPE B 8"
- (13) CLASS D PATCHES, 10" (SEE NOTE 1)
- (14) HOT-MIX ASPHALT BASE COURSE, 2-1/2"
- (15) HOT-MIX ASPHALT SURFACE COURSE, MIX "D", N70, 1-3/4"
- (16) HOT-MIX ASPHALT SURFACE COURSE, MIX "D", N70, 1-1/2"
- (17) AGGREGATE SHOULDERS, TYPE B (SPECIAL)
- (18) STRIP REFLECTIVE CRACK CONTROL TREATMENT
- (19) POROUS GRANULAR EMBANKMENT, SUBGRADE 12"
- (20) GEOTECHNICAL FABRIC FOR GROUND STABILIZATION

REVISIONS	
NAME	DATE

ILLINOIS DEPARTMENT OF TRANSPORTATION
FAI ROUTE 55
US 30 (PLAINFIELD ROAD) TO 143RD STREET

TYPICAL SECTIONS

SCALE: NONE
DATE: 02-23-07

DRAWN BY: DM
CHECKED BY: DVS



FINAL