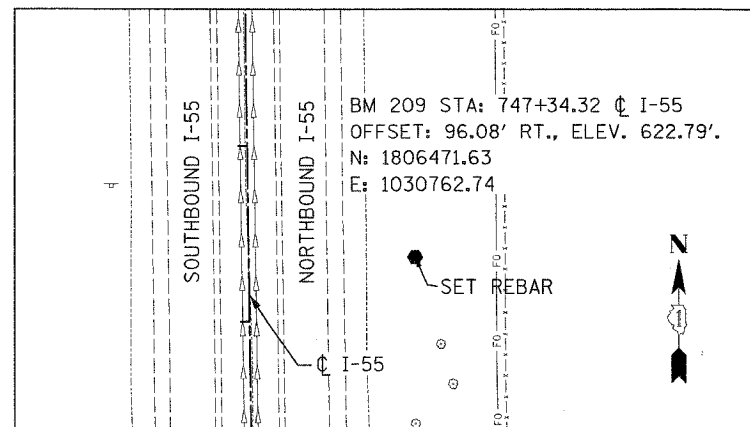
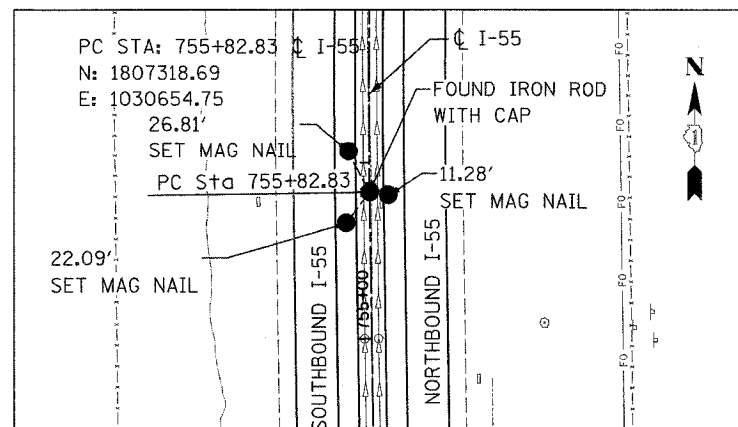


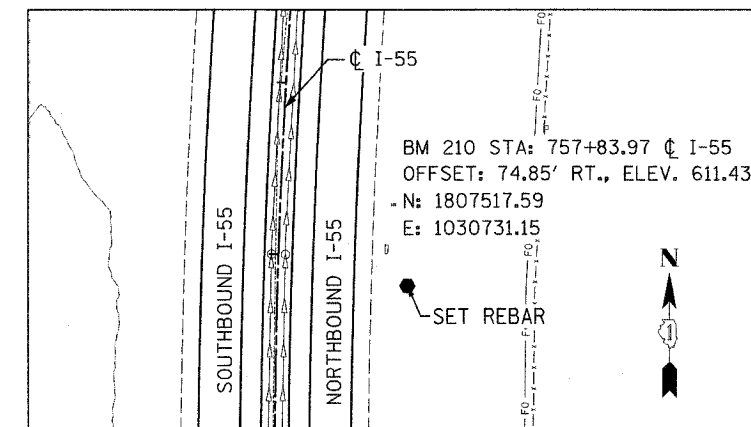
F.A.I. RTE.	SECTION	COUNTY	TOTAL SHEETS	SHEET NO.
55	99 (1&2) WRS-1	WILL	227	30
STA.		TO STA.		
FED. ROAD DIST. NO.		ILLINOIS FED. AID PROJECT		
ALIGN-11 OF 13				



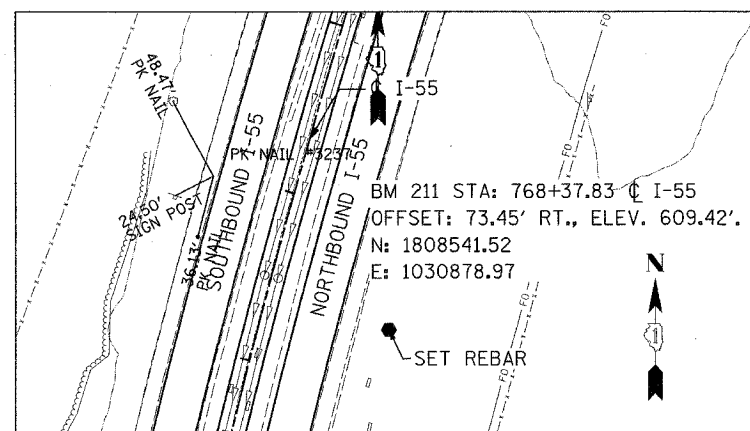
BENCHMARK 209



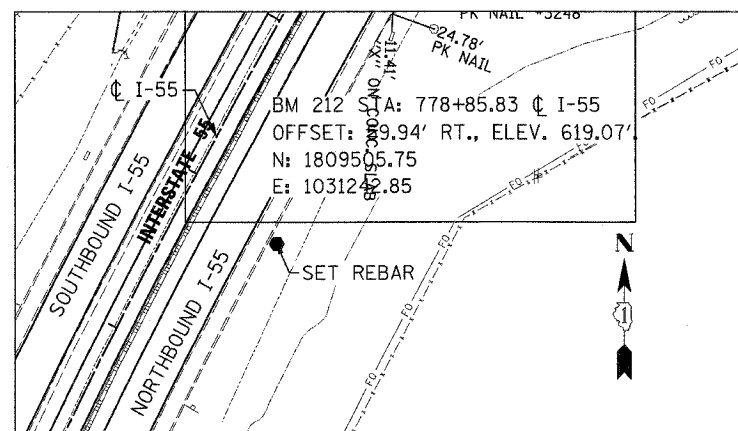
PC STA. 755+82.83



BENCHMARK 210



BENCHMARK 211



BENCHMARK 212

REVISIONS	
NAME	DATE

ILLINOIS DEPARTMENT OF TRANSPORTATION
FAI ROUTE 55
US 30 (PLAINFIELD ROAD) TO 143RD STREET

ALIGNMENT, TIES AND
BENCHMARKS

SCALE: NONE
DATE: 02-23-07

DRAWN BY ALR
CHECKED BY RH



FINAL