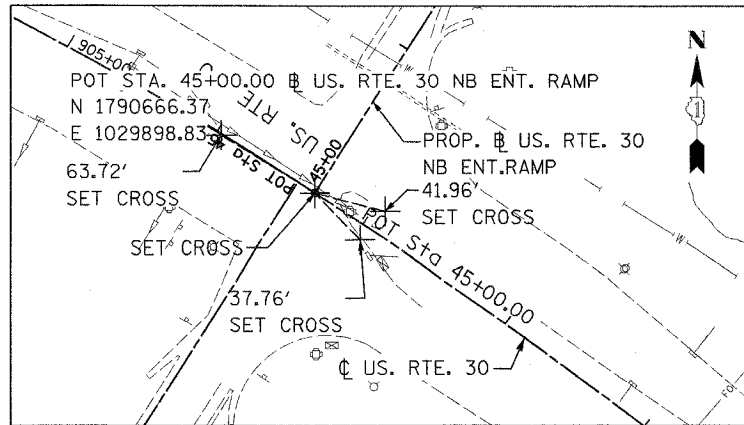
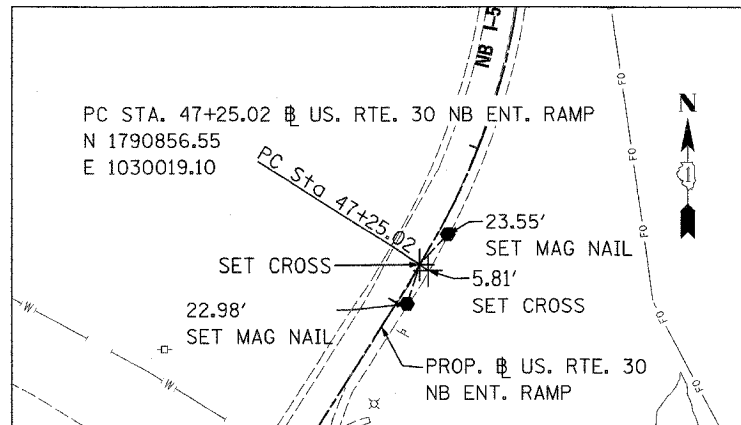


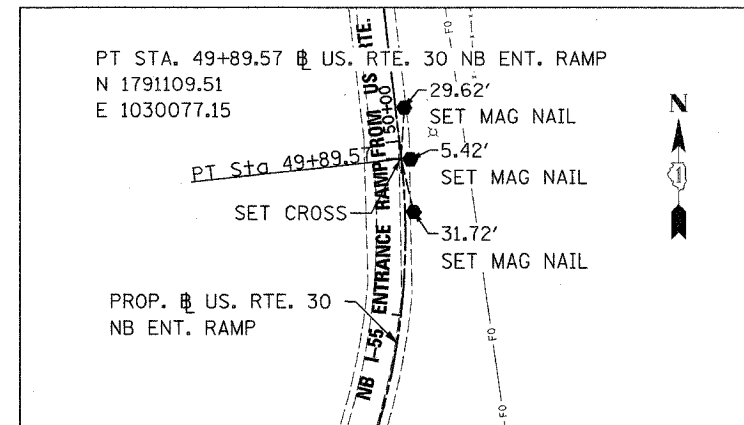
CONTRACT NO. 62896				
F.A.I. RTE.	SECTION	COUNTY	TOTAL SHEETS	SHEET NO.
55	99 (1&2) WRS-1	WILL	227	32
STA.		TO STA.		
FED. ROAD DIST. NO.		ILLINOIS FED. AID PROJECT		
ALIGN-13 OF 13				



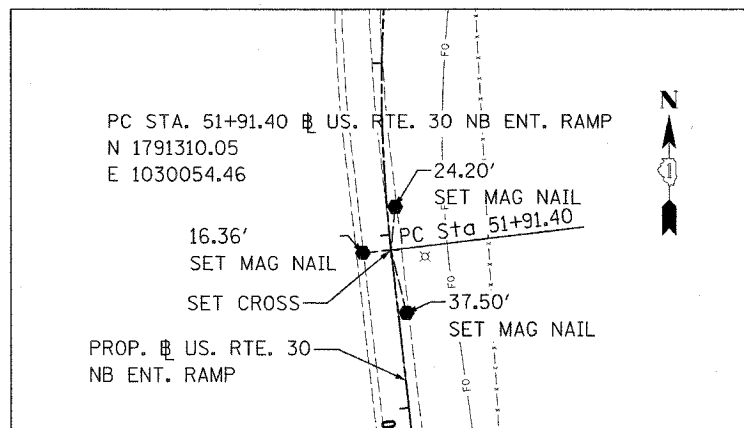
POT STA. 45+00.00



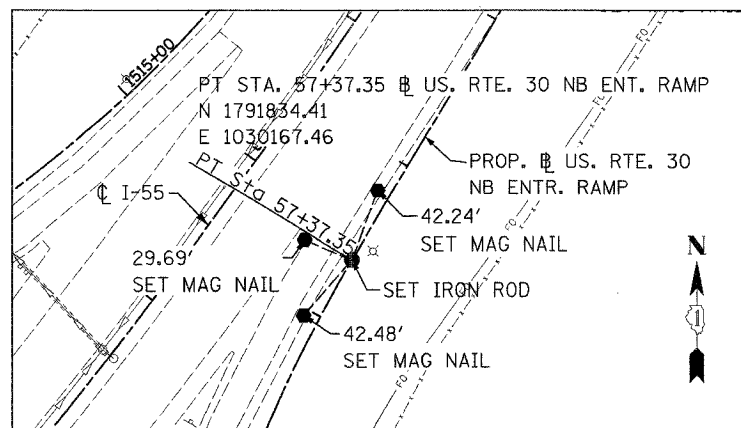
PC STA. 47+25.02



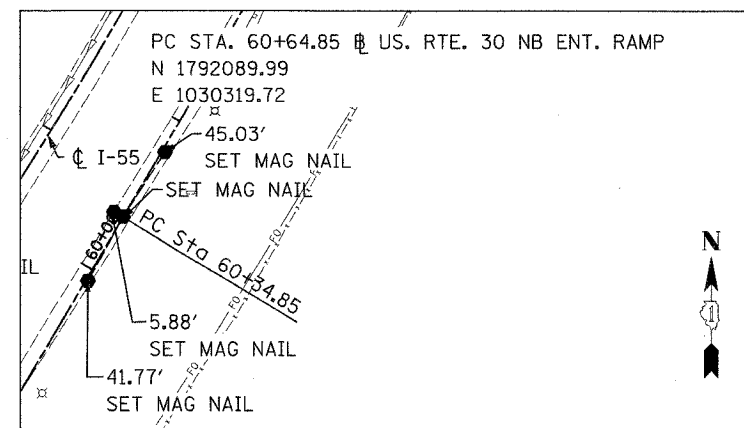
PT STA. 49+89.57



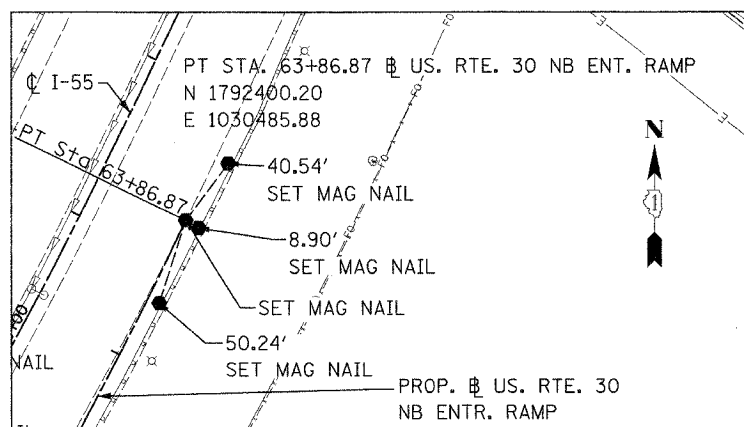
PC STA. 51+91.40



PT STA. 57+37.35



PC STA. 60+64.85



PT STA. 63+86.87

REVISIONS	
NAME	DATE

ILLINOIS DEPARTMENT OF TRANSPORTATION
 FAI ROUTE 55
 US 30 (PLAINFIELD ROAD) TO 143RD STREET

ALIGNMENT, TIES, AND BENCHMARKS

SCALE: 1" = 50'
 DATE: 02-23-07

DRAWN BY ALR
 CHECKED BY



FINAL