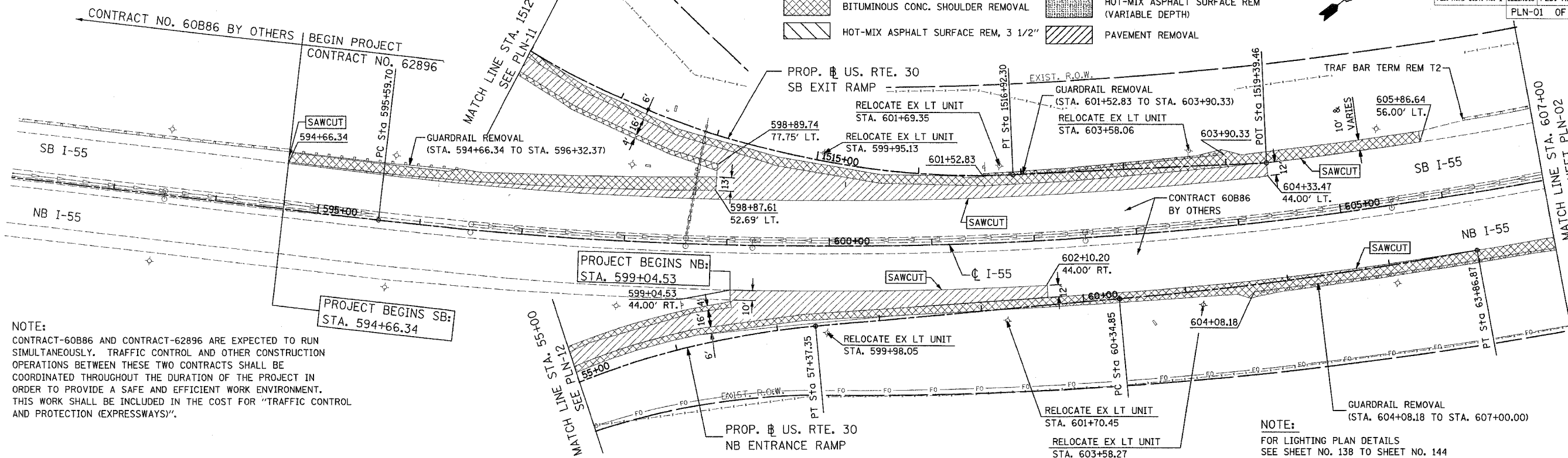
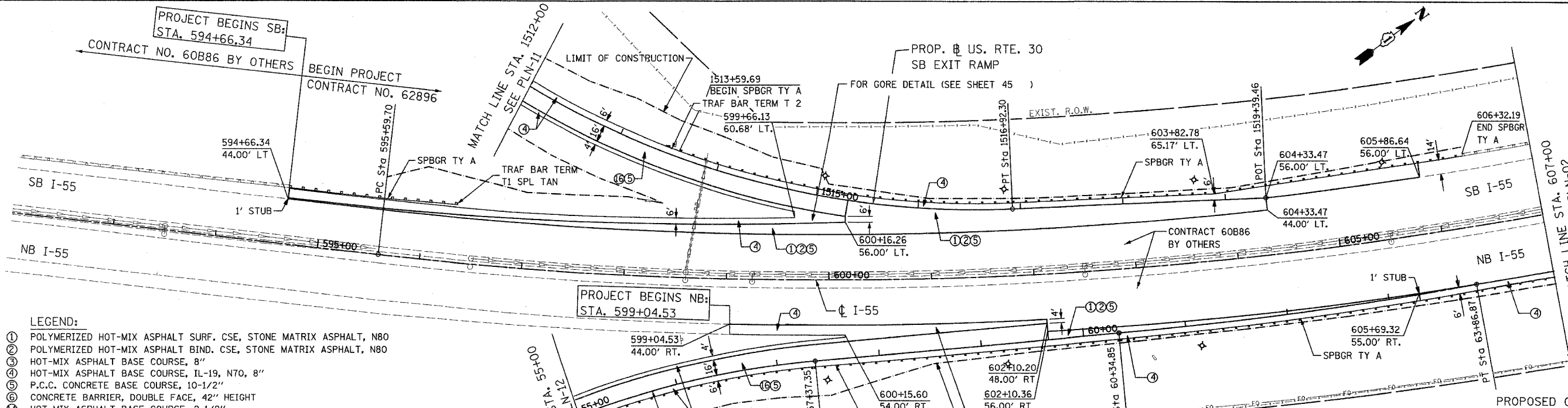


F.A.I. RTE.	SECTION	COUNTY	TOTAL SHEET NO.
55	99 (I&2) WRS-1	WILL	227
STA. 592+00 TO STA. 607+00			33
FED. ROAD DIST. NO. 1 ILLINOIS FED. AID PROJECT			
PLN-01 OF 12			

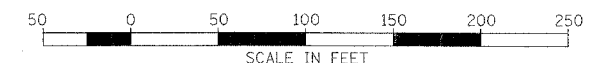
- LEGEND:**
- BITUMINOUS CONC. SHOULDER REMOVAL
 - HOT-MIX ASPHALT SURFACE REM (VARIABLE DEPTH)
 - HOT-MIX ASPHALT SURFACE REM, 3 1/2"
 - PAVEMENT REMOVAL



NOTE:
 CONTRACT-60886 AND CONTRACT-62896 ARE EXPECTED TO RUN SIMULTANEOUSLY. TRAFFIC CONTROL AND OTHER CONSTRUCTION OPERATIONS BETWEEN THESE TWO CONTRACTS SHALL BE COORDINATED THROUGHOUT THE DURATION OF THE PROJECT IN ORDER TO PROVIDE A SAFE AND EFFICIENT WORK ENVIRONMENT. THIS WORK SHALL BE INCLUDED IN THE COST FOR "TRAFFIC CONTROL AND PROTECTION (EXPRESSWAYS)".



- LEGEND:**
- ① POLYMERIZED HOT-MIX ASPHALT SURF. CSE, STONE MATRIX ASPHALT, N80
 - ② POLYMERIZED HOT-MIX ASPHALT BIND. CSE, STONE MATRIX ASPHALT, N80
 - ③ HOT-MIX ASPHALT BASE COURSE, 8"
 - ④ HOT-MIX ASPHALT BASE COURSE, IL-19, N70, 8"
 - ⑤ P.C.C. CONCRETE BASE COURSE, 10-1/2"
 - ⑥ CONCRETE BARRIER, DOUBLE FACE, 42" HEIGHT
 - ⑦ HOT-MIX ASPHALT BASE COURSE, 2-1/2"
 - ⑧ HOT-MIX ASPHALT SURFACE COURSE, MIX "D", N70 - (SHLD)
 - ⑨ HOT-MIX ASPHALT SURFACE COURSE, MIX "D", N70



REVISIONS	
NAME	DATE

ILLINOIS DEPARTMENT OF TRANSPORTATION
 FAI ROUTE 55
 US 30 (PLAINFIELD ROAD) TO 143RD STREET
 EXISTING AND PROPOSED
 ROADWAY PLAN

SCALE: 1" = 50'
 DATE: 02-23-07

DRAWN BY: ALR
 CHECKED BY: DM

FINAL