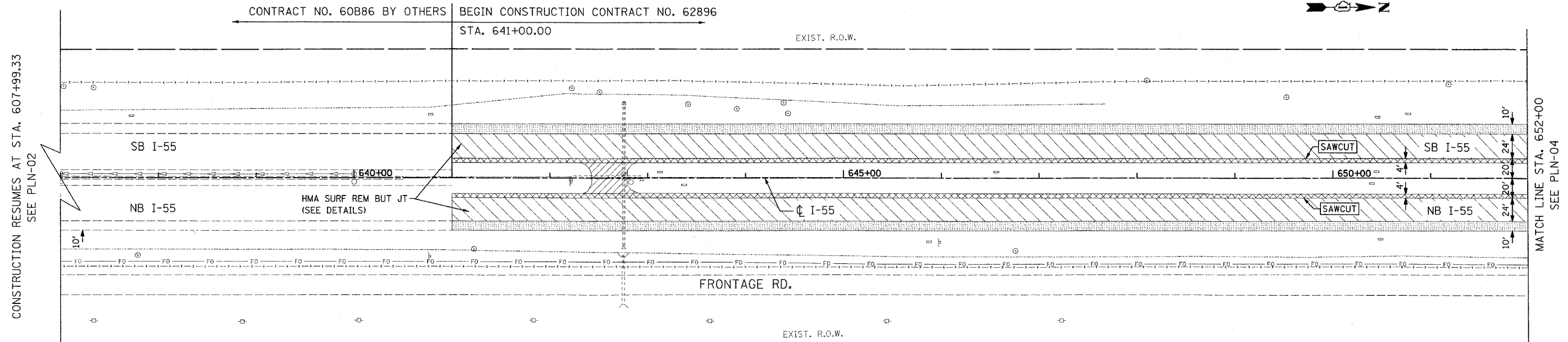


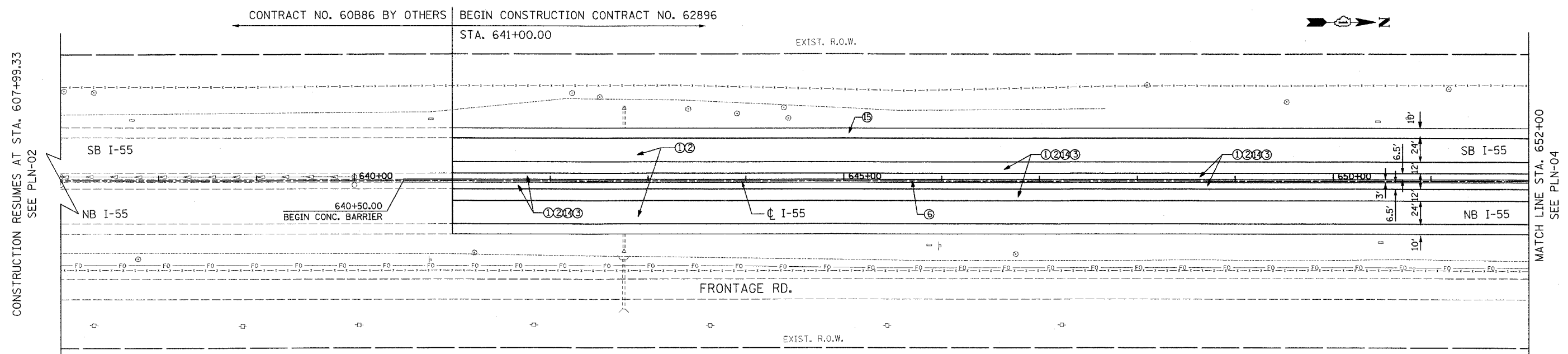
F.A.I. RTE.	SECTION	COUNTY	TOTAL SHEETS	SHEET NO.
55	99 (1&2) WRS-1	WILL	227	35
STA. 637+00 TO STA. 652+00				
FED. ROAD DIST. NO. 1		ILLINOIS FED. AID PROJECT		
		PLN-03 OF 12		



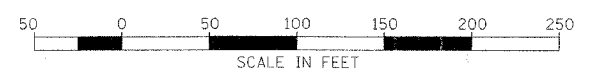
LEGEND:

	BITUMINOUS CONC. SHOULDER REMOVAL		HOT-MIX ASPHALT SURFACE REM (VARIABLE DEPTH)
	HOT-MIX ASPHALT SURFACE REM, 3 1/2"		PAVEMENT REMOVAL

EXISTING CONDITION



- LEGEND:**
- ① POLYMERIZED HOT-MIX ASPHALT SURF. CSE, STONE MATRIX ASPHALT, N80
 - ② POLYMERIZED HOT-MIX ASPHALT BIND. CSE, STONE MATRIX ASPHALT, N80
 - ③ HOT-MIX ASPHALT BASE COURSE, 8"
 - ④ HOT-MIX ASPHALT BASE COURSE, 1L-19, N70, 8"
 - ⑤ P.C.C. CONCRETE BASE COURSE, 10-1/2"
 - ⑥ CONCRETE BARRIER, DOUBLE FACE, 42" HEIGHT
 - ⑦ HOT-MIX ASPHALT BASE COURSE, 2-1/2"
 - ⑧ HOT-MIX ASPHALT SURFACE COURSE, MIX "D", N70 - (SHLD)
 - ⑨ HOT-MIX ASPHALT SURFACE COURSE, MIX "D", N70



REVISIONS	
NAME	DATE

PROPOSED CONDITION

ILLINOIS DEPARTMENT OF TRANSPORTATION
 FAI ROUTE 55
 US 30 (PLAINFIELD ROAD) TO 143RD STREET
 EXISTING AND PROPOSED
 ROADWAY PLAN

SCALE: 1" = 50'
 DATE: 02-23-07

DRAWN BY: ALR
 CHECKED BY: DM

FINAL