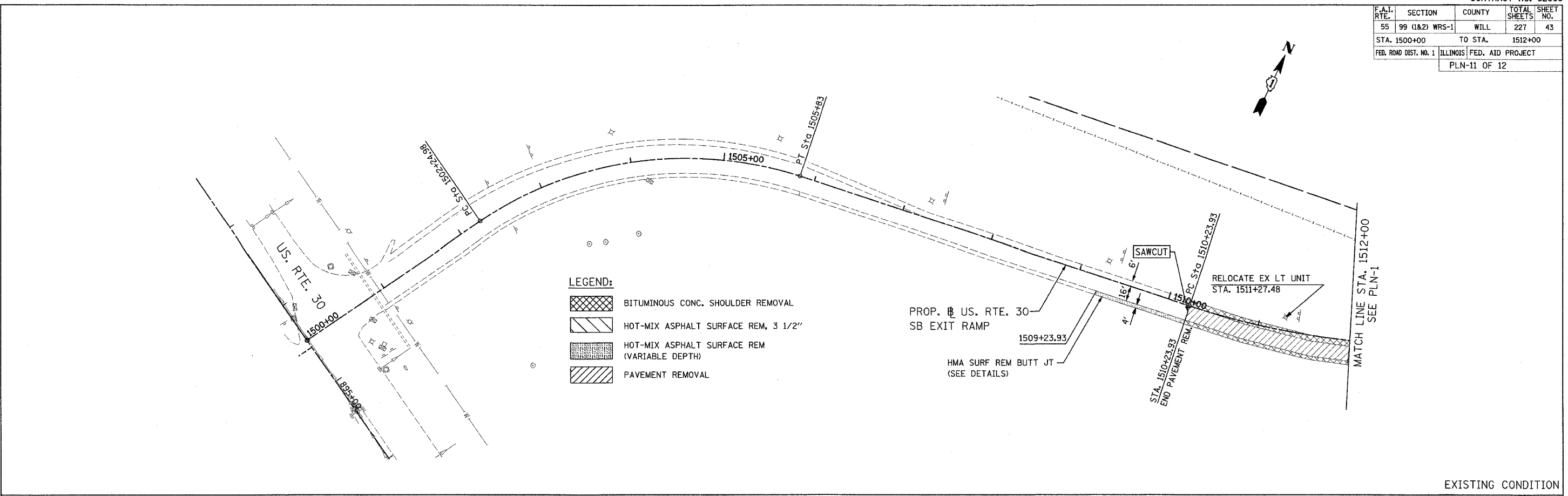
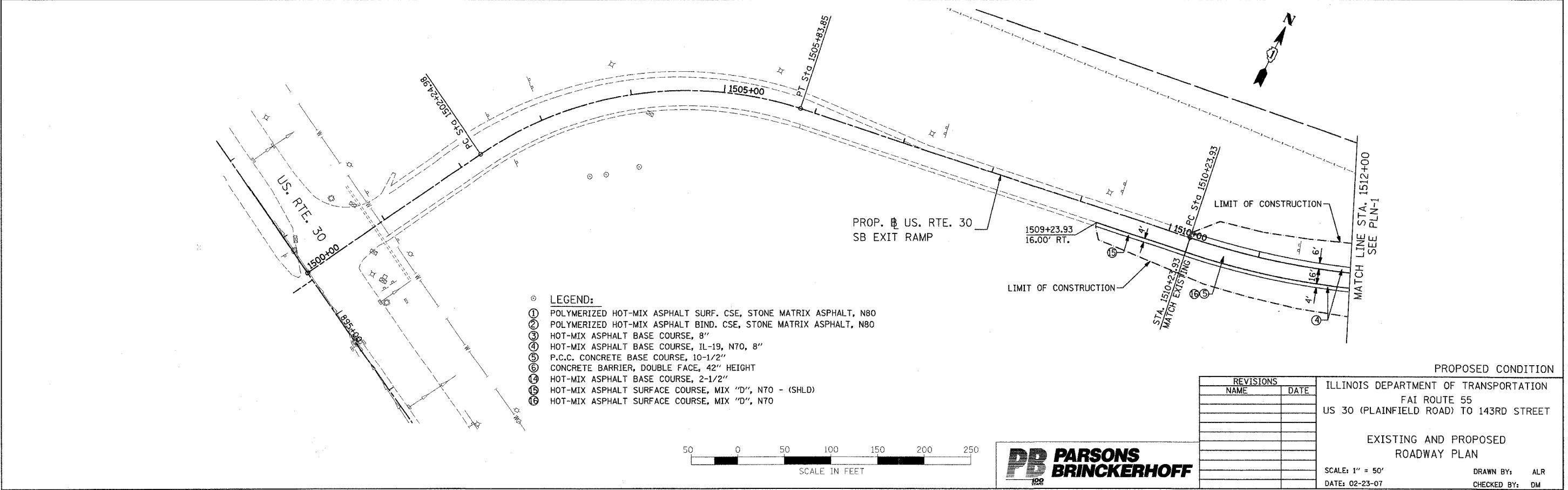


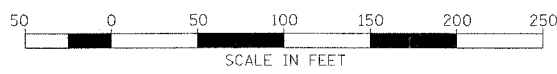
F.A.I. RTE.	SECTION	COUNTY	TOTAL SHEETS	SHEET NO.
55	99 (1&2) WRS-1	WILL	227	43
STA. 1500+00		TO STA. 1512+00		
FED. ROAD DIST. NO. 1		ILLINOIS FED. AID PROJECT		
PLN-11 OF 12				



EXISTING CONDITION



PROPOSED CONDITION



REVISIONS	
NAME	DATE

ILLINOIS DEPARTMENT OF TRANSPORTATION  
 FAI ROUTE 55  
 US 30 (PLAINFIELD ROAD) TO 143RD STREET

EXISTING AND PROPOSED  
 ROADWAY PLAN

SCALE: 1" = 50'  
 DATE: 02-23-07

DRAWN BY: ALR  
 CHECKED BY: DM

FINAL