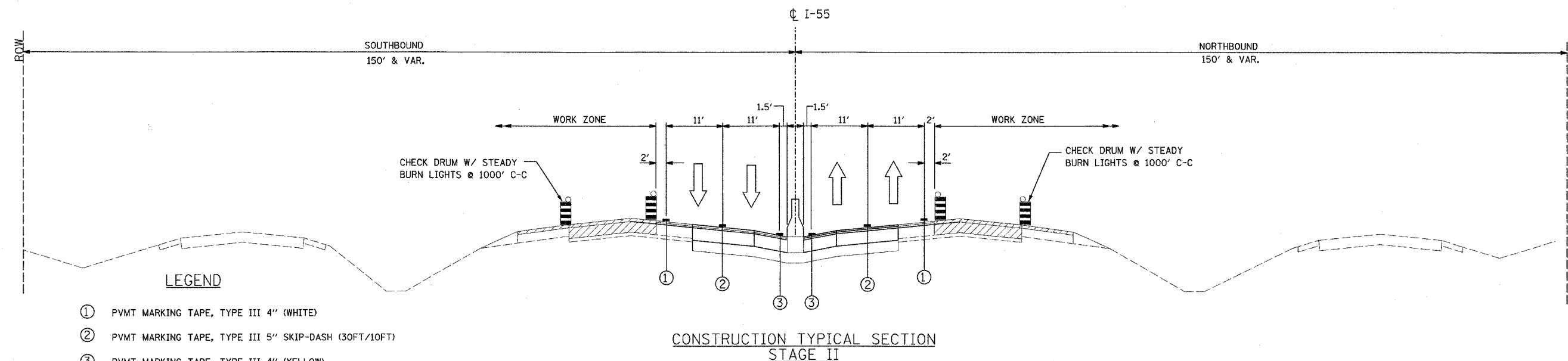
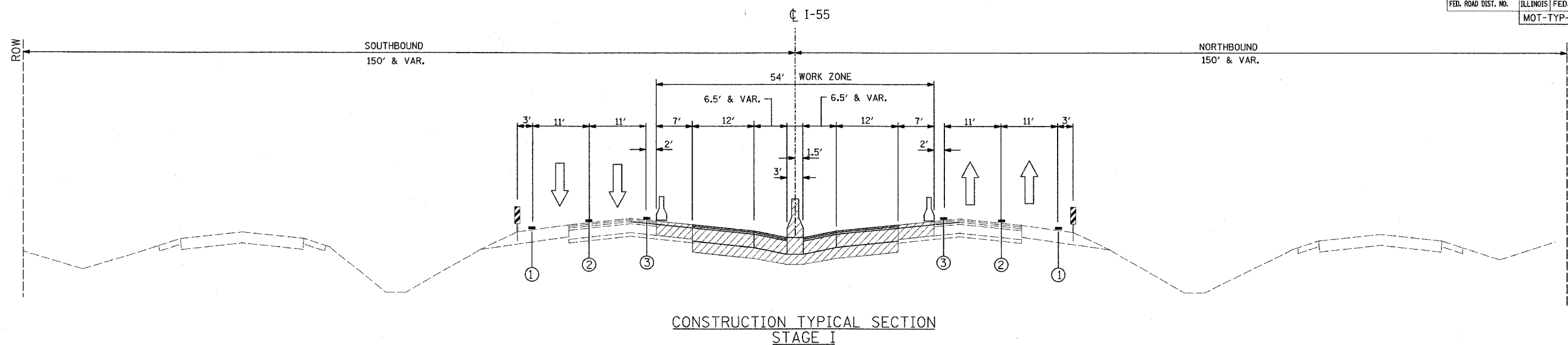
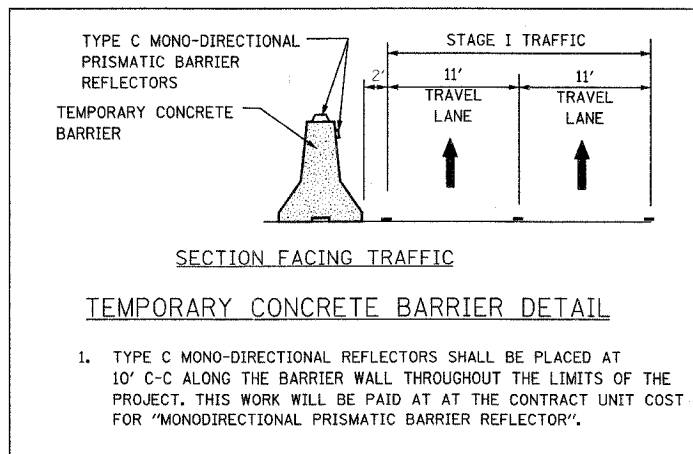


F.A.I. RTE.	SECTION	COUNTY	TOTAL SHEETS	SHEET NO.
55	99 (I&2) WRS-1	WILL	227	59
STA.		TO STA.		
FED. ROAD DIST. NO.		ILLINOIS FED. AID PROJECT		
		MOT-TYP-05 OF 06		



LEGEND

- ① PVMT MARKING TAPE, TYPE III 4" (WHITE)
- ② PVMT MARKING TAPE, TYPE III 5" SKIP-DASH (30FT/10FT)
- ③ PVMT MARKING TAPE, TYPE III 4" (YELLOW)
- ④ HOT-MIX ASPHALT SURFACE COURSE, MIX "D", N70, 1-3/4"
- ⑤ HOT-MIX ASPHALT BASE COURSE, 10-1/4"
- ⑥ EXISTING AGGREGATE SHOULDER
- ⑦ AGGREGATE SHOULDER, TYPE B
- ▨ VERTICAL PANELS AT 100' IN CURVES AND 200' IN TANGENTS
- ▨ DRUMS W/ STEADY BURN LIGHTS AT 50' C-C IN TAPERS AND 100' C-C IN TANGENTS
- ▨ WORK ZONE
- ↑ TRAFFIC FLOW ARROW
- ▨ TEMPORARY CONCRETE BARRIER



1. TYPE C MONO-DIRECTIONAL REFLECTORS SHALL BE PLACED AT 10' C-C ALONG THE BARRIER WALL THROUGHOUT THE LIMITS OF THE PROJECT. THIS WORK WILL BE PAID AT AT THE CONTRACT UNIT COST FOR "MONODIRECTIONAL PRISMATIC BARRIER REFLECTOR".



REVISIONS	
NAME	DATE

STAGE I & STAGE II

ILLINOIS DEPARTMENT OF TRANSPORTATION
 FAI ROUTE 55
 US 30 (PLAINFIELD ROAD) TO 143RD STREET

SUGGESTED STAGES OF
 CONSTRUCTION AND TRAFFIC CONTROL
 GENERAL NOTES AND DETAILS

SCALE: NONE
 DATE: 02-23-07

DRAWN BY: DM
 CHECKED BY: DVS

FINAL