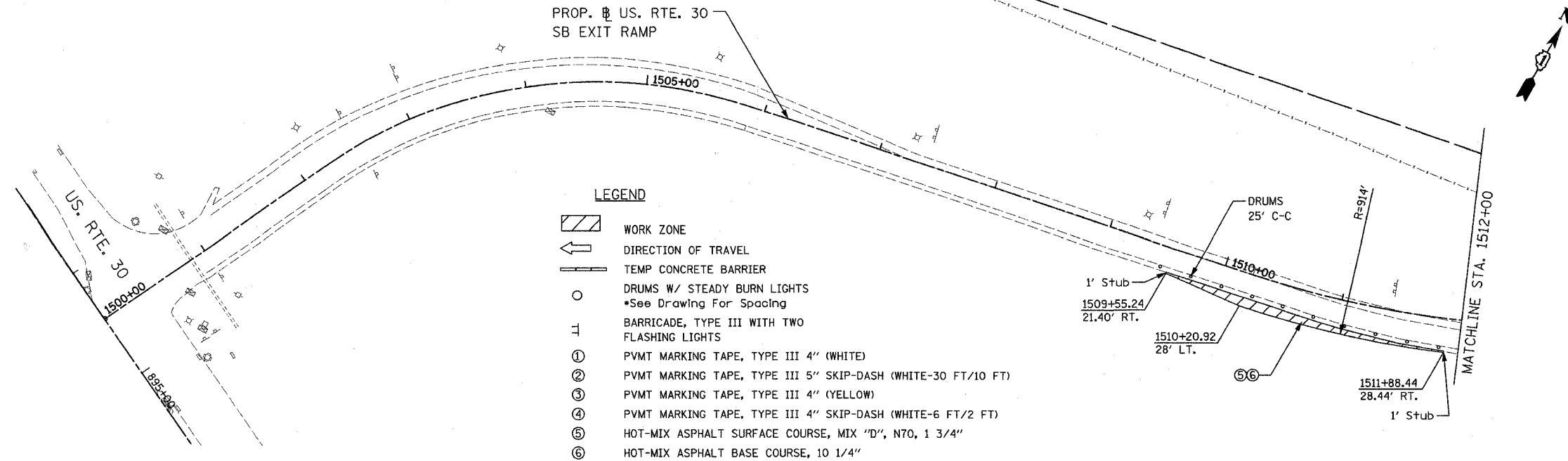
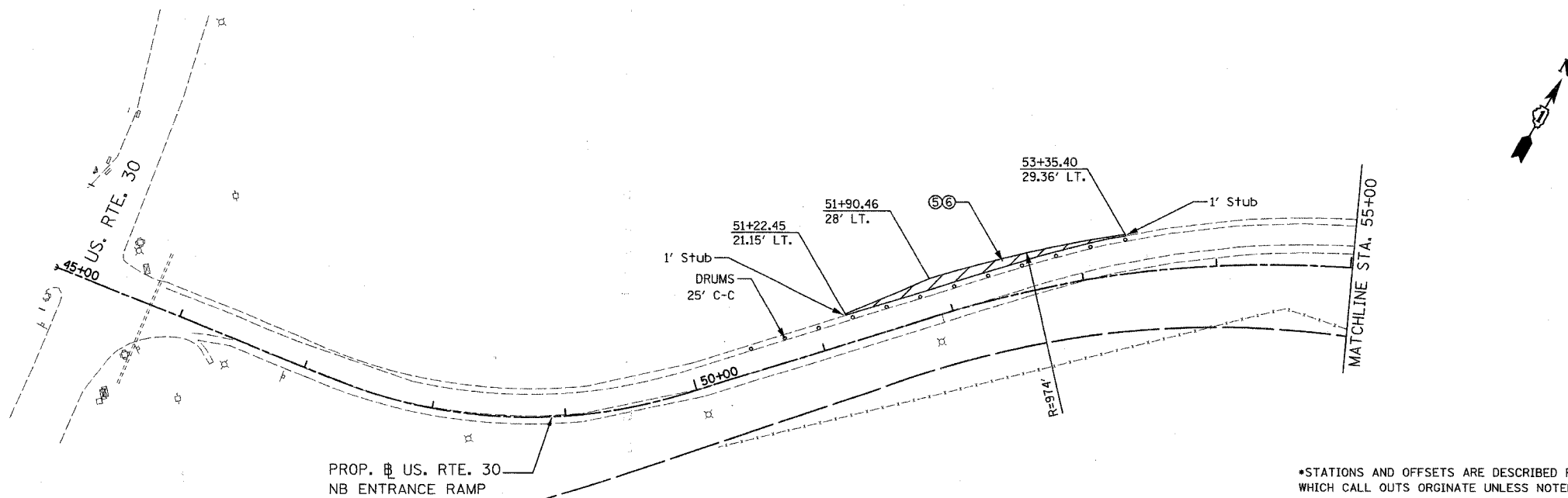


F.A.I. RTE.	SECTION	COUNTY	TOTAL SHEETS	SHEET NO.
55	99 (1&2) WRS-1	WILL	227	65
STA. 1500+00/45+00 TO STA 1512+00/55+00				
ILLINOIS FED. AID PROJECT				
MOTI-05 OF 05				



\*STATIONS AND OFFSETS ARE DESCRIBED FROM RAMP @ TO WHICH CALL OUTS ORIGINATE UNLESS NOTED OTHERWISE.



\*STATIONS AND OFFSETS ARE DESCRIBED FROM RAMP @ TO WHICH CALL OUTS ORIGINATE UNLESS NOTED OTHERWISE.

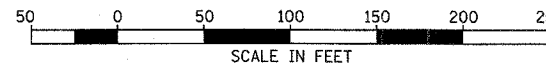
STAGE I

REVISIONS	
NAME	DATE

ILLINOIS DEPARTMENT OF TRANSPORTATION  
 FAI ROUTE 55  
 US 30 (PLAINFIELD ROAD) TO 143RD STREET  
 SUGGESTED STAGES OF CONSTRUCTION  
 AND TRAFFIC CONTROL

SCALE: 1" = 50'  
 DATE: 02-23-07

DRAWN BY: TJR  
 CHECKED BY: DM



FINAL