

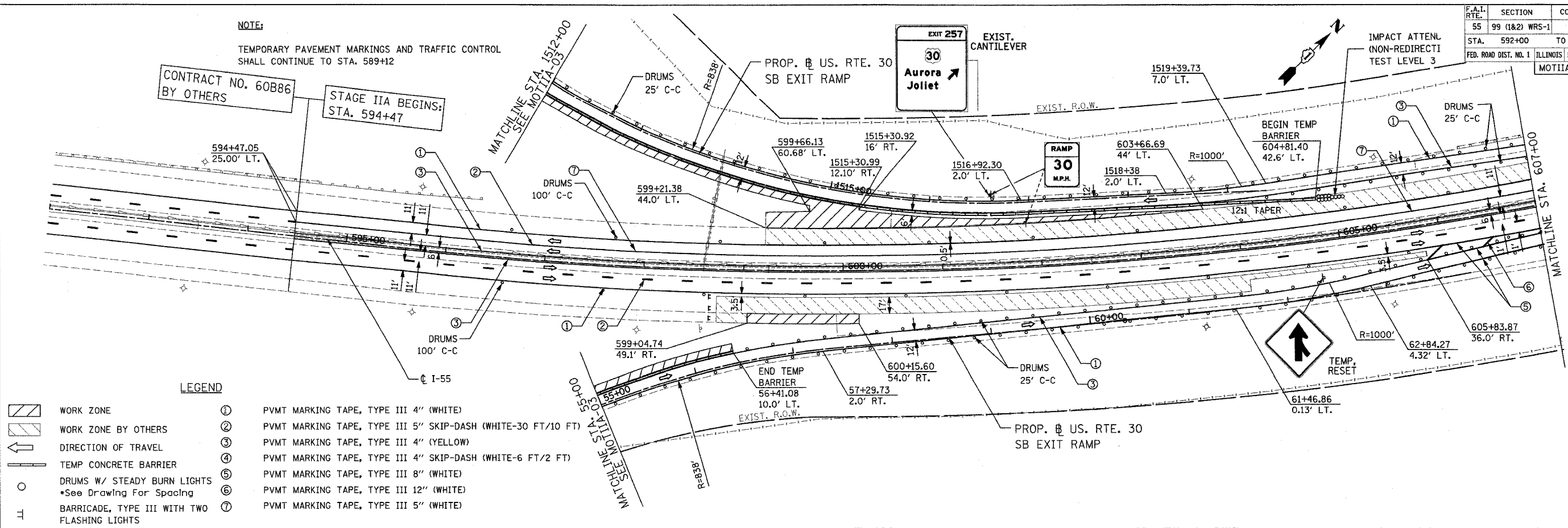
F.A.I. RTE.	SECTION	COUNTY	TOTAL SHEETS	SHEET NO.
55	99 (1&2) WRS-1	WILL	227	72
STA. 592+00		TO STA. 622+00		
FED. ROAD DIST. NO. 1		ILLINOIS FED. AID PROJECT		
MOTIIA-01 OF 02				

**NOTE:**

TEMPORARY PAVEMENT MARKINGS AND TRAFFIC CONTROL SHALL CONTINUE TO STA. 589+12

CONTRACT NO. 60B86 BY OTHERS

STAGE IIA BEGINS: STA. 594+47

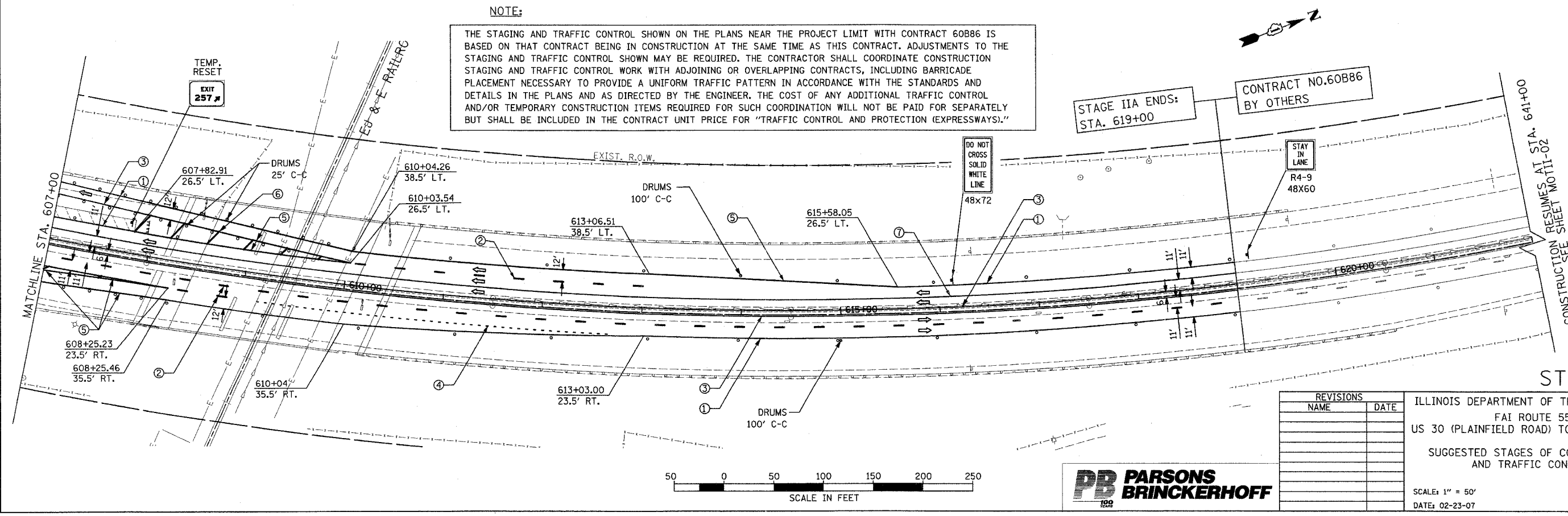


**LEGEND**

- WORK ZONE
- WORK ZONE BY OTHERS
- DIRECTION OF TRAVEL
- TEMP CONCRETE BARRIER
- DRUMS W/ STEADY BURN LIGHTS  
\*See Drawing For Spacing
- BARRICADE, TYPE III WITH TWO FLASHING LIGHTS
- ① PVMT MARKING TAPE, TYPE III 4" (WHITE)
- ② PVMT MARKING TAPE, TYPE III 5" SKIP-DASH (WHITE-30 FT/10 FT)
- ③ PVMT MARKING TAPE, TYPE III 4" (YELLOW)
- ④ PVMT MARKING TAPE, TYPE III 4" SKIP-DASH (WHITE-6 FT/2 FT)
- ⑤ PVMT MARKING TAPE, TYPE III 8" (WHITE)
- ⑥ PVMT MARKING TAPE, TYPE III 12" (WHITE)
- ⑦ PVMT MARKING TAPE, TYPE III 5" (WHITE)

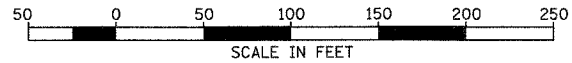
**NOTE:**

THE STAGING AND TRAFFIC CONTROL SHOWN ON THE PLANS NEAR THE PROJECT LIMIT WITH CONTRACT 60B86 IS BASED ON THAT CONTRACT BEING IN CONSTRUCTION AT THE SAME TIME AS THIS CONTRACT. ADJUSTMENTS TO THE STAGING AND TRAFFIC CONTROL SHOWN MAY BE REQUIRED. THE CONTRACTOR SHALL COORDINATE CONSTRUCTION STAGING AND TRAFFIC CONTROL WORK WITH ADJOINING OR OVERLAPPING CONTRACTS, INCLUDING BARRICADE PLACEMENT NECESSARY TO PROVIDE A UNIFORM TRAFFIC PATTERN IN ACCORDANCE WITH THE STANDARDS AND DETAILS IN THE PLANS AND AS DIRECTED BY THE ENGINEER. THE COST OF ANY ADDITIONAL TRAFFIC CONTROL AND/OR TEMPORARY CONSTRUCTION ITEMS REQUIRED FOR SUCH COORDINATION WILL NOT BE PAID FOR SEPARATELY BUT SHALL BE INCLUDED IN THE CONTRACT UNIT PRICE FOR "TRAFFIC CONTROL AND PROTECTION (EXPRESSWAYS)."



**STAGE IIA**

REVISIONS		ILLINOIS DEPARTMENT OF TRANSPORTATION FAI ROUTE 55 US 30 (PLAINFIELD ROAD) TO 143RD STREET SUGGESTED STAGES OF CONSTRUCTION AND TRAFFIC CONTROL
NAME	DATE	
		SCALE: 1" = 50' DATE: 02-23-07



DRAWN BY: TJR  
CHECKED BY: DM

FINAL