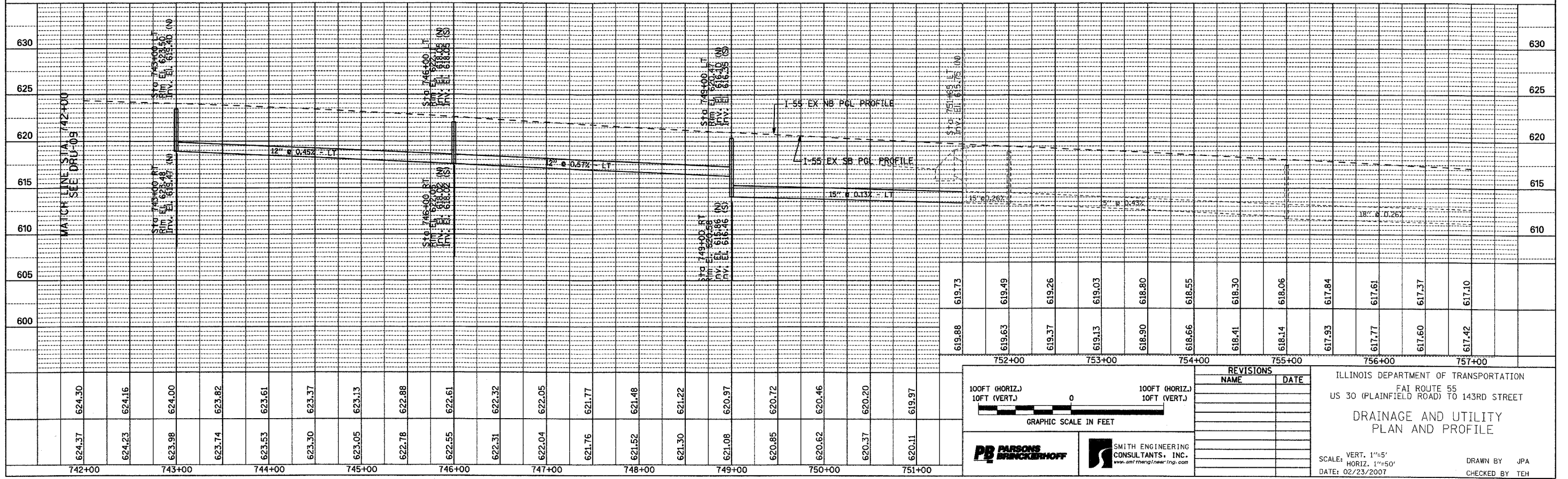
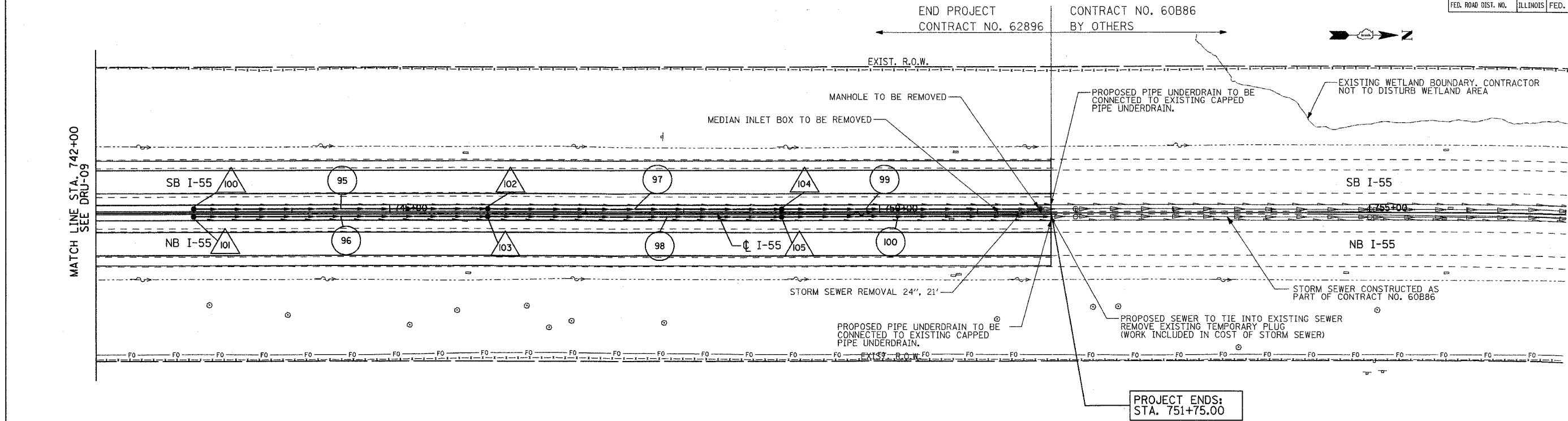


CONTRACT NO. 62896				
F.A. RTE.	SECTION	COUNTY	TOTAL SHEETS	SHEET NO.
55	99 (I&2) WRS-1	WILL	227	95
STA. 742+00	TO STA. 757+00			
FED. ROAD DIST. NO.	ILLINOIS	FED. AID PROJECT	DRU-10 OF 10	



624.37	624.23	623.98	623.74	623.53	623.30	623.05	622.78	622.55	622.31	622.04	621.76	621.52	621.30	621.08	620.85	620.62	620.37	620.11
742+00	743+00	744+00	745+00	746+00	747+00	748+00	749+00	750+00	751+00									

100FT (HORIZ.)  
10FT (VERT.)

GRAPHIC SCALE IN FEET

REVISIONS	
NAME	DATE

ILLINOIS DEPARTMENT OF TRANSPORTATION  
FAI ROUTE 55  
US 30 (PLAINFIELD ROAD) TO 143RD STREET  
**DRAINAGE AND UTILITY  
PLAN AND PROFILE**

SCALE: VERT. 1"=5'  
HORIZ. 1"=50'  
DATE: 02/23/2007

DRAWN BY: JPA  
CHECKED BY: TEH

FINAL