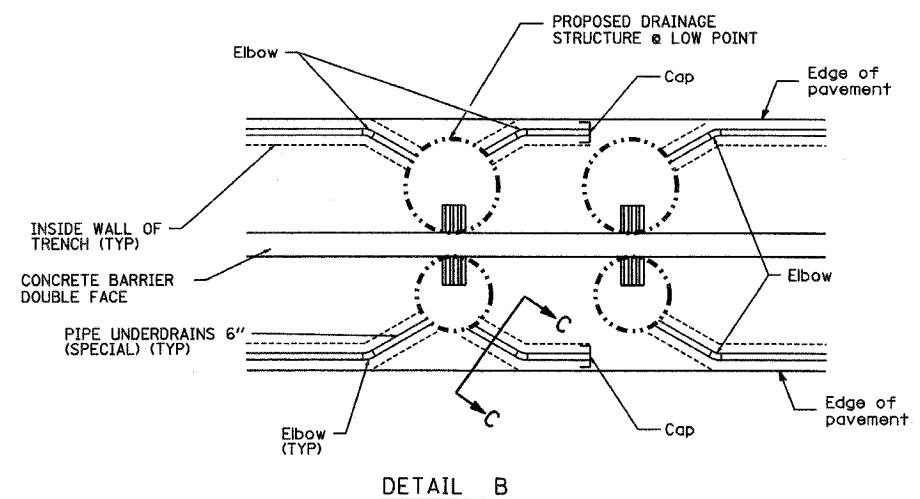
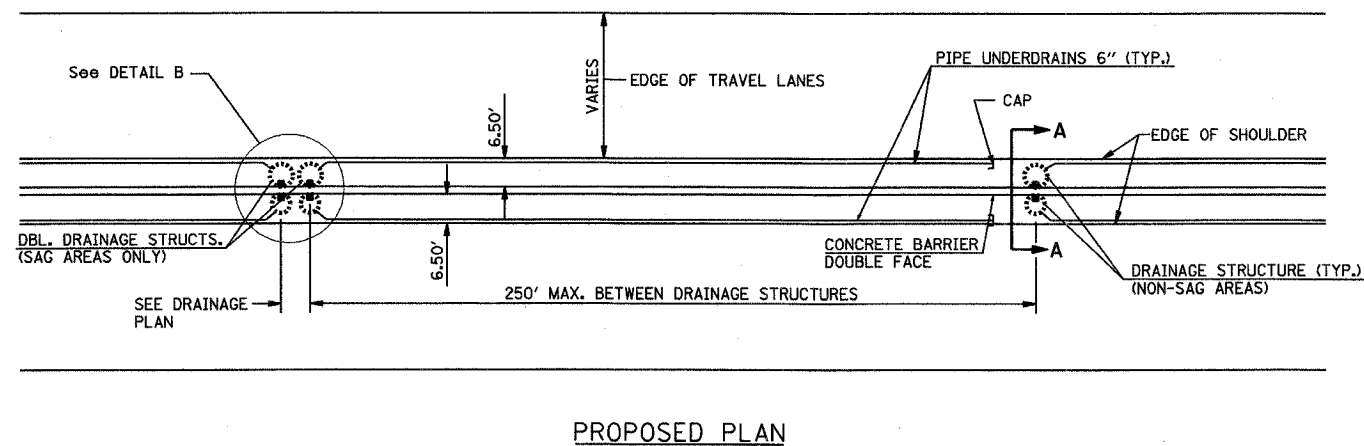


F.A.P. RTE.	SECTION	COUNTY	TOTAL SHEETS	SHEET NO.
55	99 (1&2) WRS-1	WILL	227	97
STA.		TO STA.		
FED. ROAD DIST. NO.	ILLINOIS	FED. AID PROJECT		
DOET 2 OF 3				



PB PARSONS BRINCKERHOFF
1922

SMITH ENGINEERING CONSULTANTS, INC.
www.smithengineering.com

REVISIONS	
NAME	DATE

ILLINOIS DEPARTMENT OF TRANSPORTATION

FAI ROUTE 55
US 30 (PLAINFIELD ROAD) TO 143RD STREET
DRAINAGE DETAILS
PIPE UNDERDRAINS

SHEET 1 OF 2

SCALE: DRAWN BY JRM
DATE: 02-23-2007 CHECKED BY TEH

FINAL