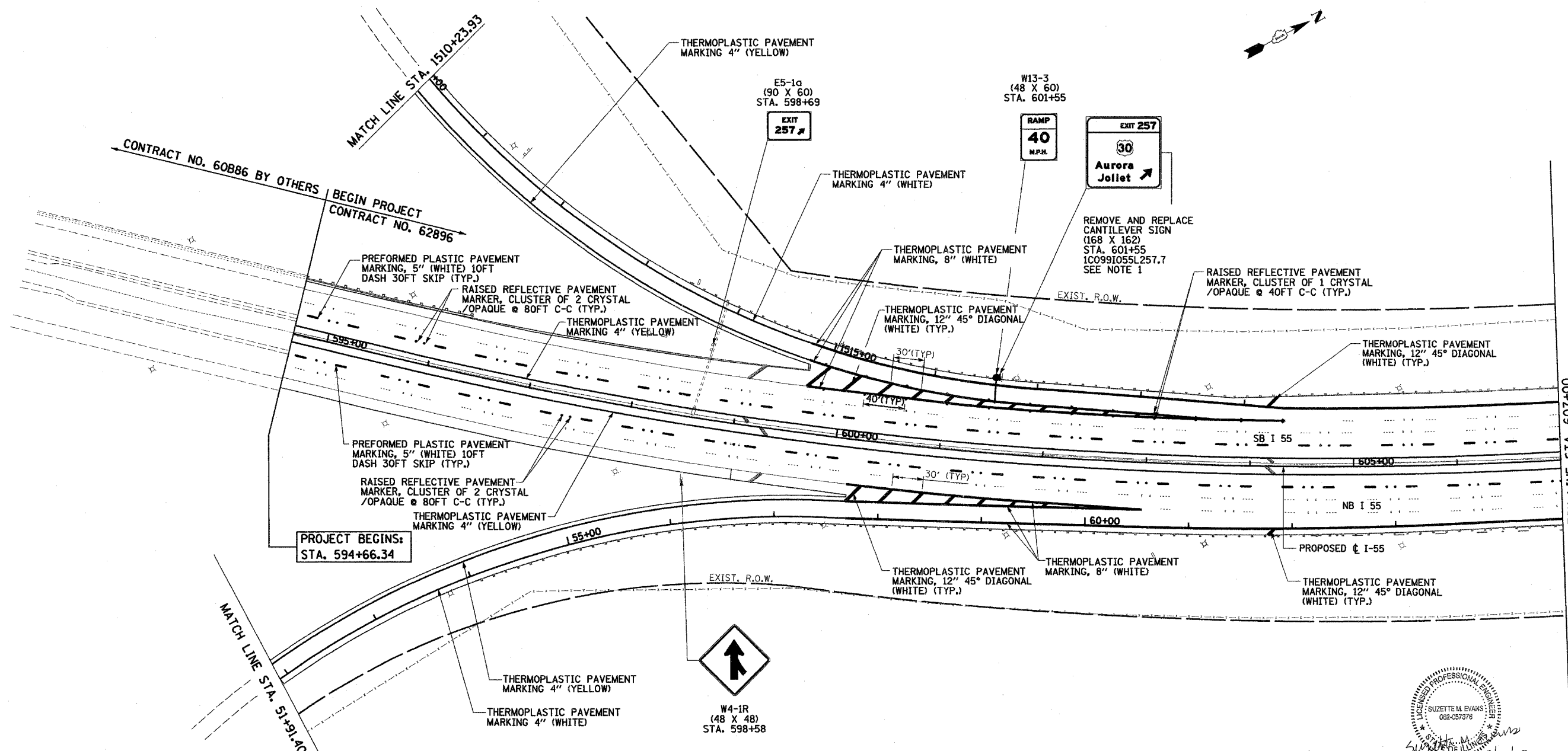
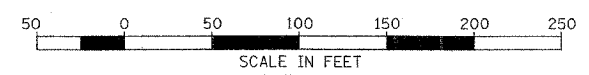


F.A.P. DIST.	SECTION	COUNTY	TOTAL SHEETS	SHEET NO.
55	100 (1&2) I-9	WILL	227	109
STA. 594+66.34		TO STA. 607+00		
FED. ROAD DIST. NO.		ILLINOIS FED. AID PROJECT		
PVMRK-1 OF 27				



NOTE:

1. CONTRACTOR TO INSTALL A 3 1/2" PVC CONDUIT LARGE RADIUS ELBOW IN THE BASE OF CANTILEVER SIGN FOUNDATION. TOP OF CONDUIT ENTRY INTO FOUNDATION SHALL BE A MINIMUM OF 30" BELOW GRADE. STUB AND CAP FOR FUTURE USE. COST IS INCIDENTAL TO "DRILLED SHAFT CONCRETE FOUNDATIONS."
2. THE CONTRACTOR SHALL TRANSPORT AND DROP OFF ALL SALVAGEABLE SIGNS AT THE IDOT NEW LENOX SIGN SHOP LOCATED AT THE SE FRONTAGE ROAD NEAR THE US ROUTE 30 & INTERSTATE 80 INTERCHANGE IN NEW LENOX, ILLINOIS. THE CONTACT PERSON IS CONNIE SHANAHAN (847-705-4501). THIS WORK SHALL MEET WITH THE APPROVAL OF THE ENGINEER AND THE COST SHALL BE INCLUDED IN THE CONTRACT UNIT PRICE FOR "REMOVE SIGN PANEL ASSEMBLY" OF THE TYPE SPECIFIED OR "REMOVE SIGN PANEL - TYPE 3."



SUZETTE M. EVANS

 2/15/07

 Exp. 11/30/07

DAVID MASON & ASSOCIATES
 Civil Engineering
 Structural Engineering
 Surveying
 445 S. Illinois, Suite 610
 Chicago, IL 60611
 (312) 942-9800

PARSONS BRINCKERHOFF

REVISIONS	
NAME	DATE

ILLINOIS DEPARTMENT OF TRANSPORTATION
 F.A.I. I-55
 US RTE. 30 TO 143rd STREET
 PAVEMENT MARKING
 AND SIGNING PLANS
 SCALE: 1" = 50'
 DATE: FEBRUARY 23, 2007
 DRAWN BY: JS, LC
 CHECKED BY: SE