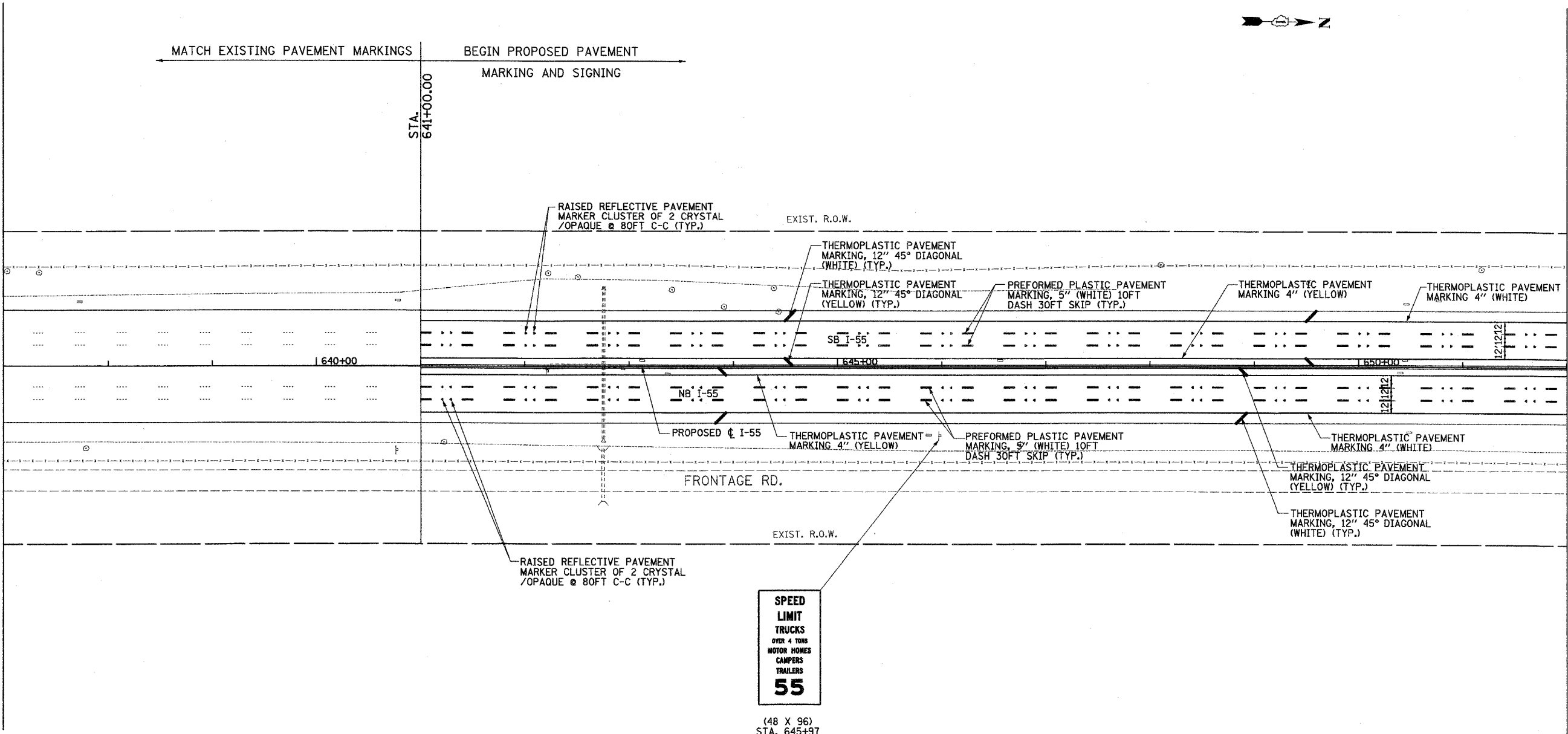


F.A.P. RTE.	SECTION	COUNTY	TOTAL SHEETS	SHEET NO.
55	100 (1&2) I-9	WILL.	227	111
STA.	641+00	TO STA.	652+00	
FED. ROAD DIST. NO.	ILLINOIS FED. AID PROJECT			
PVMRK-3 OF 27				

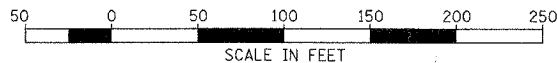
CONSTRUCTION RESUMES AT STA. 608+26.93
SEE PVMRK-2



MATCH LINE STA. 652+00

SPEED LIMIT
OVER 4 TONS
MOTOR HOMES
CAMPER
TRAILERS
55

(48 X 96)
STA. 645+97



DAVID MASON & ASSOCIATES
Civil Engineering
Structural Engineering
Surveying
645 E. Illinois, Suite 649
Chicago, IL 60611
(312) 942-9800

PARSONS BRINCKERHOFF

REVISIONS	
NAME	DATE

ILLINOIS DEPARTMENT OF TRANSPORTATION
F.A.I. I-55
US RTE. 30 TO 143rd STREET

PAVEMENT MARKING
AND SIGNING PLANS

SCALE: 1" = 50'
DATE: FEBRUARY 23, 2007

DRAWN BY: JS, LC
CHECKED BY: SE