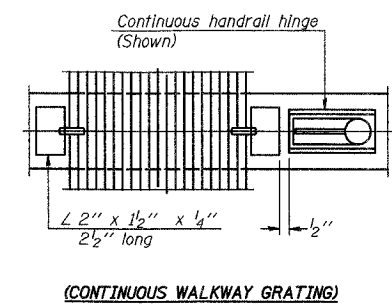
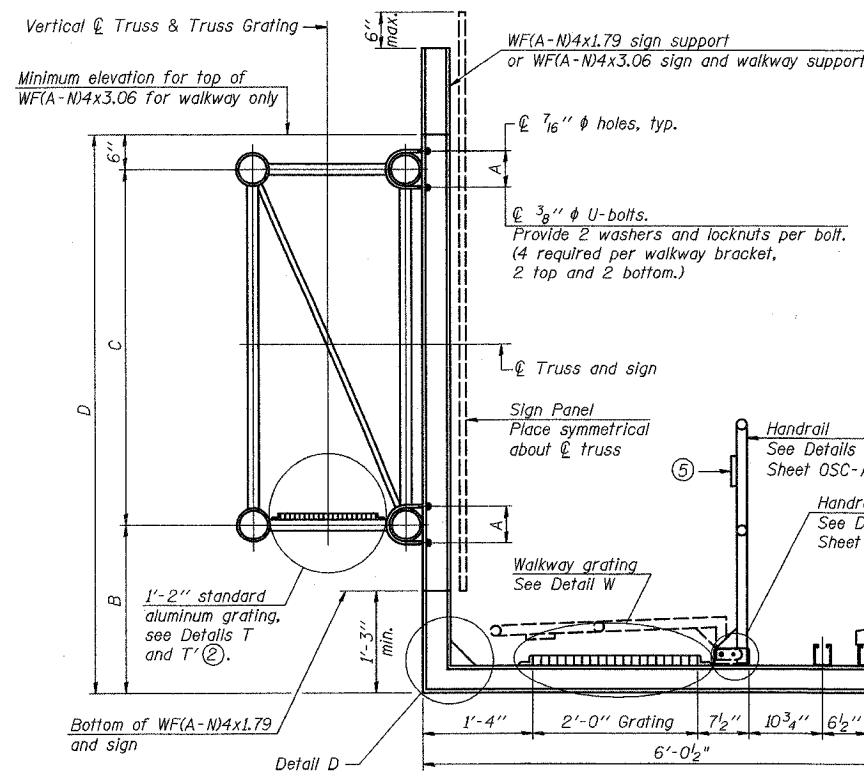
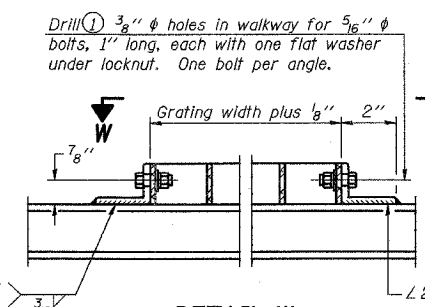


F.A.P. RTE.	SECTION	COUNTY	TOTAL SHEETS	SHEET NO.
55	100 (1&2)	I-9	WILL	227
STA.		TO STA.		
FED. ROAD DIST. NO.		ILLINOIS FED. AID PROJECT		
DETL-21 OF 27				

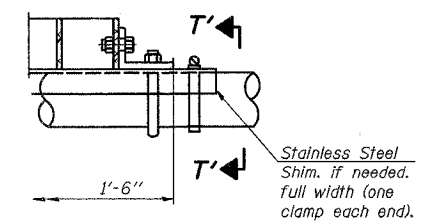


SECTION W-W (AT WALKWAY GRATING SPLICE)

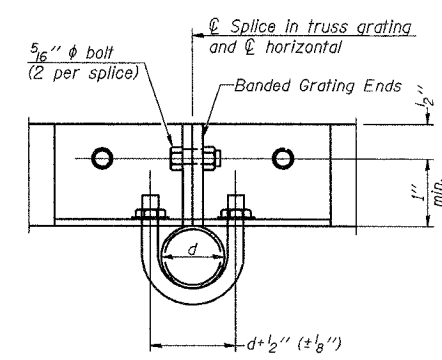
SPECIFICATIONS FOR STANDARD ALUMINUM GRATING
 Main Bearing Bars (MBB) shall be 3/16" x 1 1/2" on 1 3/16" centers and conform to ASTM B211 Alloy 6061-T6.
 Cross bars (CB) shall be 3/16" x 1 1/2" on 4" centers and conform to ASTM B211 Alloy 6063-T5 or 6061-T6.
OR
 Aluminum Grating with modified "4" sections for main bearing bars shall meet the following requirements:
 Main bars shall conform to ASTM B211 Alloy 6061-T6 and have a minimum section modulus equal to 0.0705 in.³ per bar, a depth of 1 1/2", spaced on 1 3/16" centers.
 Cross bars shall conform to ASTM B211 Alloy 6063-T5 or T-42 and spaced on 4" centers.



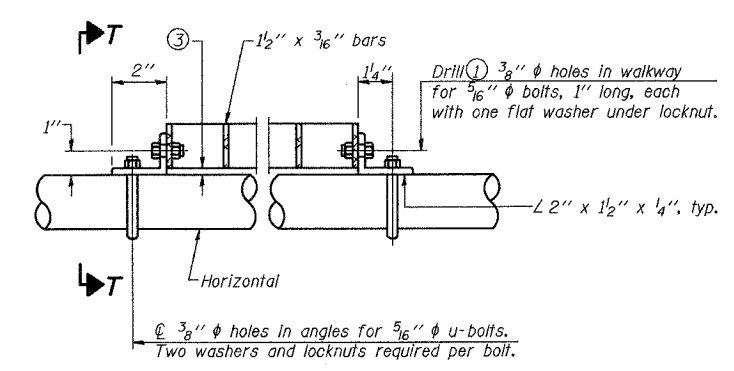
DETAIL W (Walkway grating)



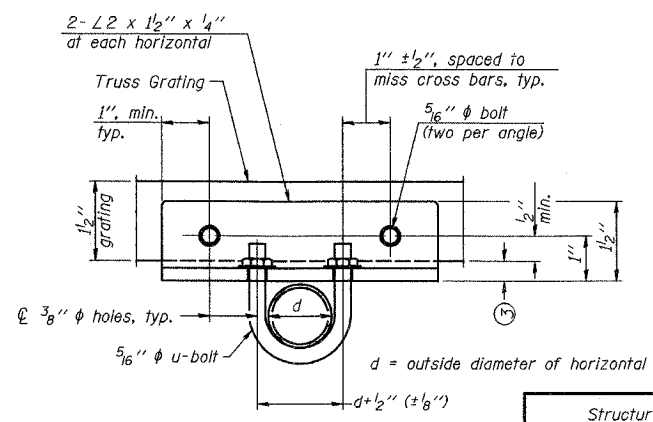
DETAIL T' (Truss grating splice)
 Details not shown same as Detail T. Alternate materials may be used subject to the Engineer's review and approval.



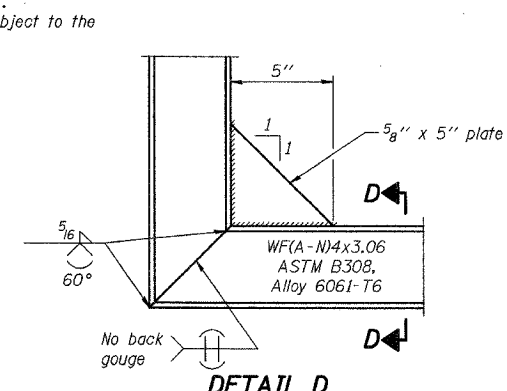
SECTION T'-T'



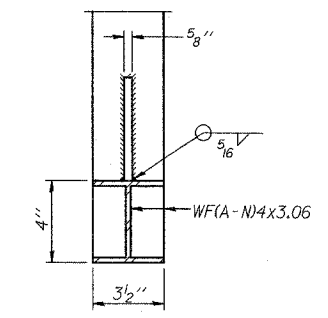
DETAIL T (Truss grating at horizontal)



SECTION T-T



DETAIL D (See Detail P, Base Sheet OSC-A-8.)



SECTION D-D

NUMBER	REVISION	DATE

Structure Number	Station	A	B	C	D
IC0991055L257.7	601+55	7 1/8"	6'-3"	5'-6"	12'-3"

- Drilling holes in grating may be done in shop or field, based on Contractor's preference and subject to accurate alignment.
- When truss grating must be spliced, use suggested detail or other methods subject to the Engineer's review and approval. Locate splice to avoid interference between cross bars and bolt locations.
- Tube to grating gap may vary from 0 to 1/2", max. to align walkway, allow for camber, etc.
- If Handrail Joint present, weld angle to WFA-N)4 and 1/4" extension bars. (See Base Sheet OSC-A-8)
- ϕ 1/2" x 1/2" x 2" welded to handrail posts to protect locations that contact grating.

DAVID MASON & ASSOCIATES
 Civil Engineering
 Structural Engineering
 Surveying
 446 N. Illinois, Suite 610
 Chicago, IL 60611
 (312) 940-9000

PARSONS BRINCKERHOFF

REVISIONS	
NAME	DATE

OSC-A-7 1-7-05
 ILLINOIS DEPARTMENT OF TRANSPORTATION
 F.A.I. I-55
 US RTE. 30 TO 143rd STREET
 CANTILEVER SIGN STRUCTURES
 WALKWAY DETAILS
 ALUMINUM TRUSS & STEEL POST
 SCALE: DRAWN BY: JS, LC
 DATE: FEBRUARY 23, 2007 CHECKED BY: SE