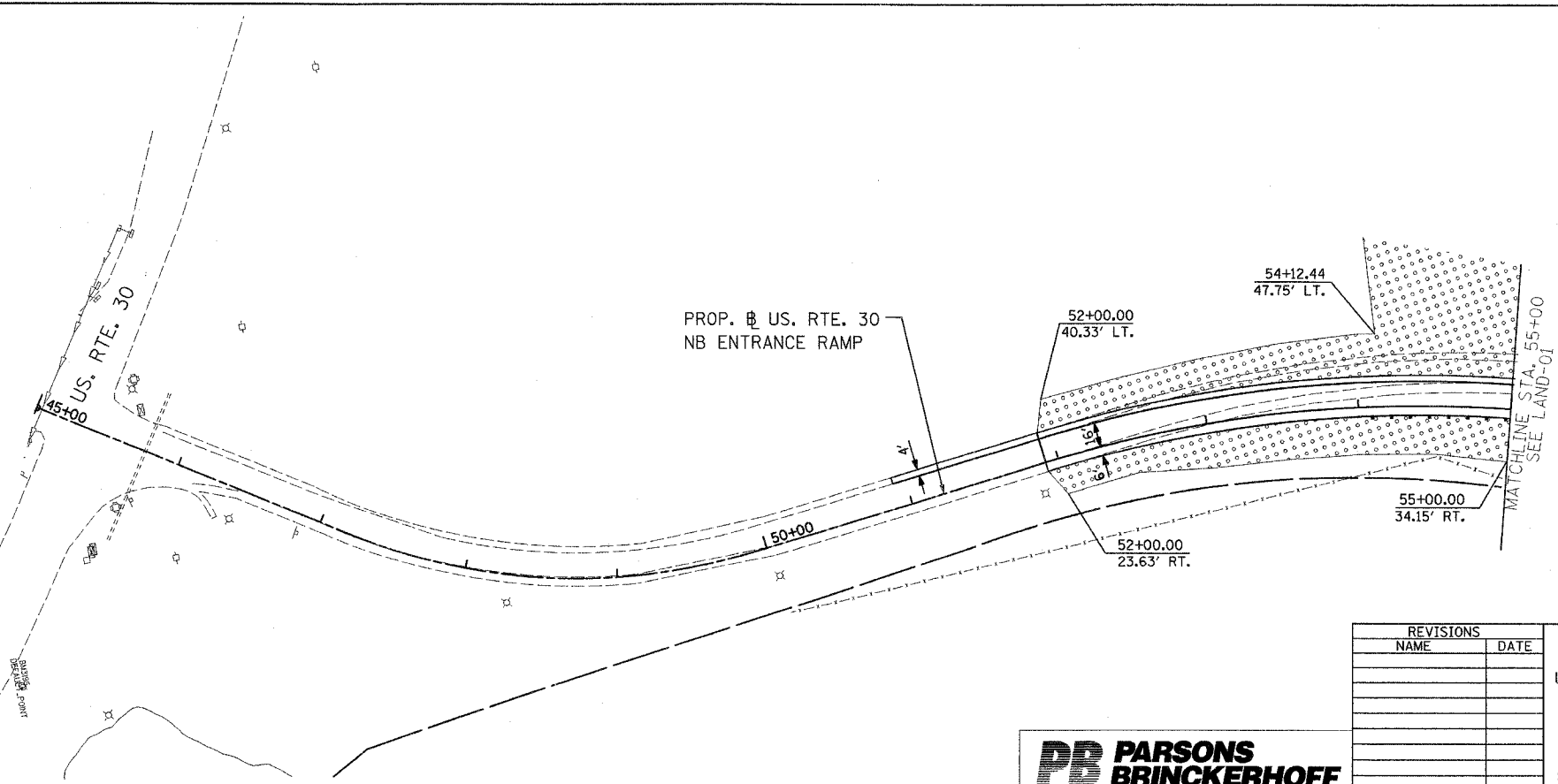
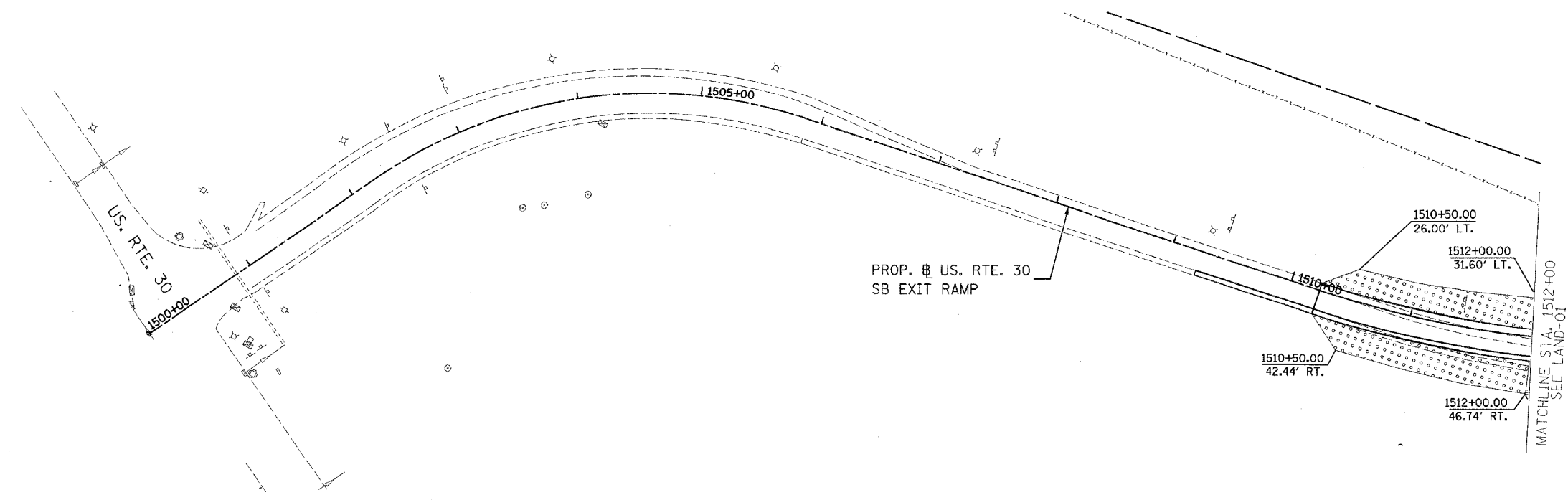


F.A.I. RTE.	SECTION	COUNTY	TOTAL SHEETS	SHEET NO.
55	99 (1&2) WRS-1	WILL	227	137
STA. TO STA.		ILLINOIS FED. AID PROJECT		
		LAND-02 OF 2		



REVISIONS	
NAME	DATE

ILLINOIS DEPARTMENT OF TRANSPORTATION  
 FAI ROUTE 55  
 US 30 (PLAINFIELD ROAD) TO 143RD STREET  
 LANDSCAPING PLANS  
 SCALE: 1" = 50'  
 DATE: 02-23-07  
 DRAWN BY: SJV  
 CHECKED BY: DVS



FINAL