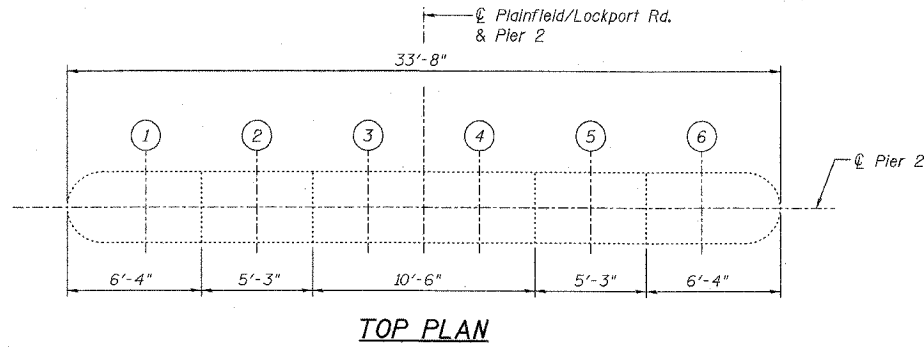
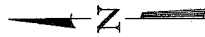
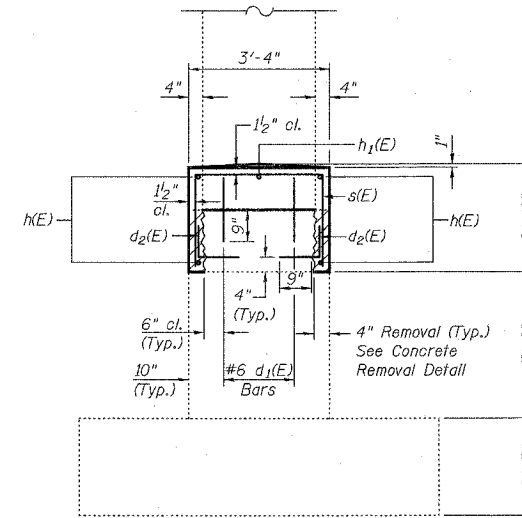


STATE OF ILLINOIS  
DEPARTMENT OF TRANSPORTATION

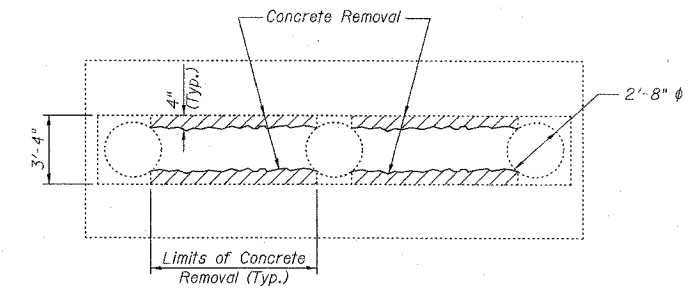
ROUTE NO.	SECTION	COUNTY	TOTAL SHEETS	SHEET NO.
FAI 55	**	WILL	227	148
FED. ROAD DIST. NO. 7				
ILLINOIS				
FED. AID PROJECT-				
** SECTION 99 (I&2) WRS-1				
CONTRACT NO. 62896				



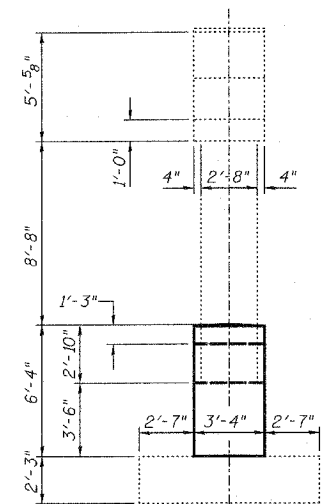
TOP PLAN



SECTION A-A

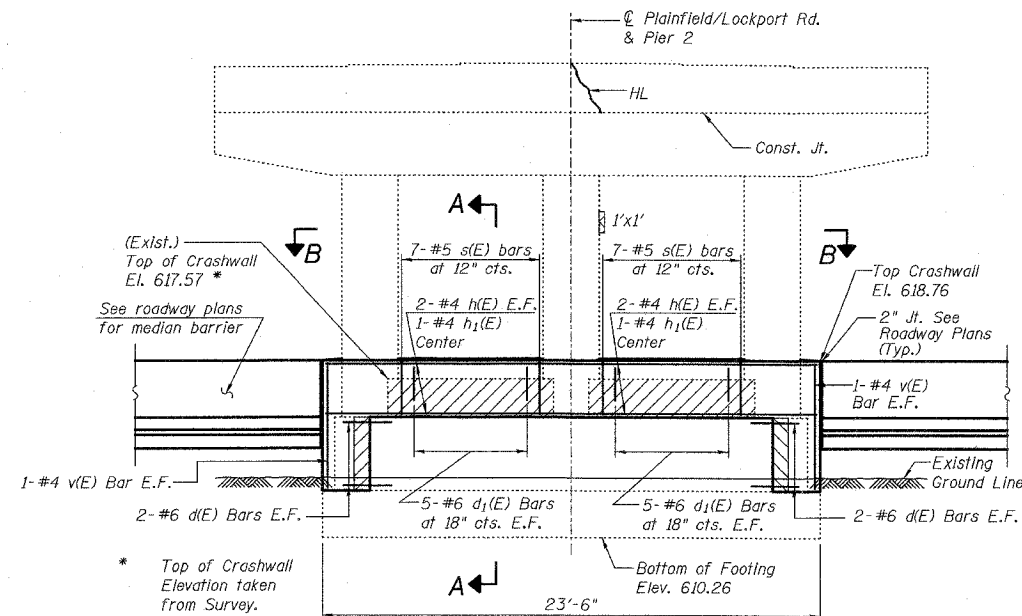


CONCRETE REMOVAL DETAIL  
(Only Existing Crashwall Removal Shown)



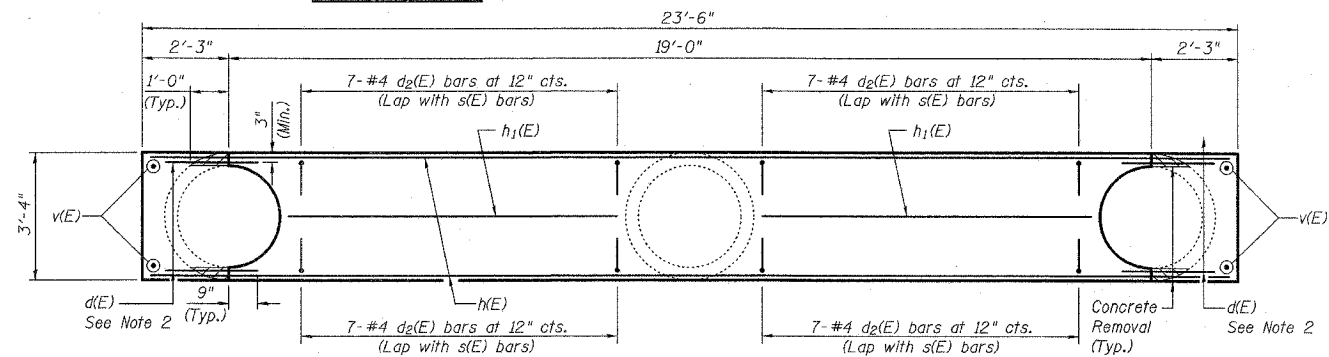
END VIEW  
(Looking South)

(Reinforcement Not Shown)



PIER ELEVATION  
(Looking East)

(Reinforcement Shown)



SECTION B-B

Notes:

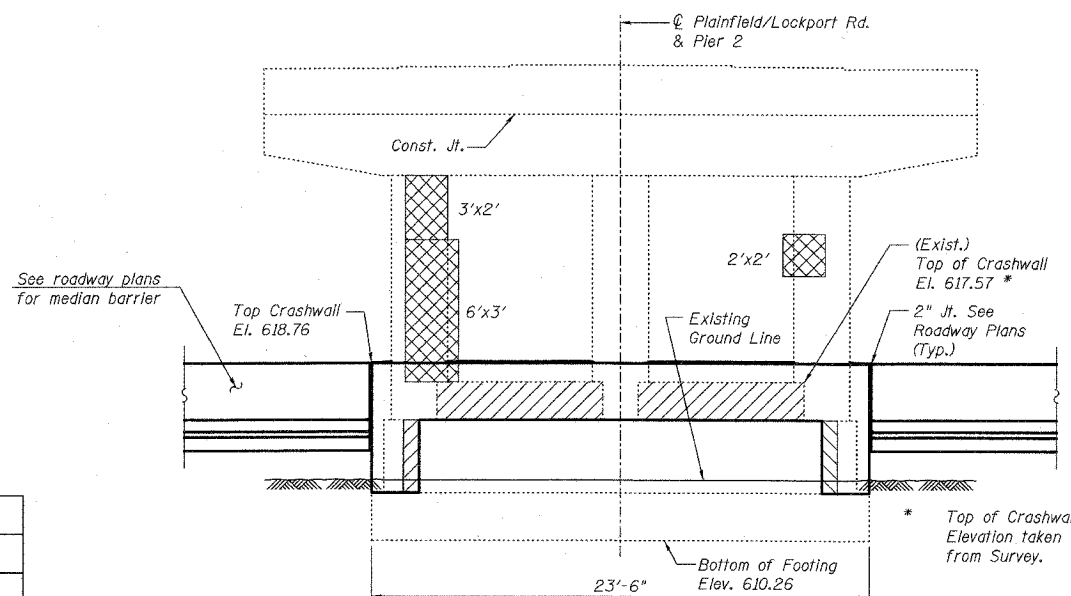
1. Reinforcement designated "(E)" shall be epoxy coated.
2. Drill and grout #6 d(E), #6 d1(E), & #4 d2(E) in 9" min. drilled holes according to Section 584 of the Standard Specifications. Method and grout are subject to the approval of the Engineer. Cost included with Reinforcement Bars, Epoxy Coated.
3. Existing reinforcement extending into the removal area shall be cleaned, straightened, and incorporated into the new construction. Any reinforcement bars that are damaged during concrete removal shall be replaced with an approved bar splicer or anchorage system. Cost shall be included with Concrete Removal.

LEGEND

- Structural Repair of Concrete (Depth equal to or less than 5")
- Concrete Removal
- H.L. Hairline Crack - Not to be sealed

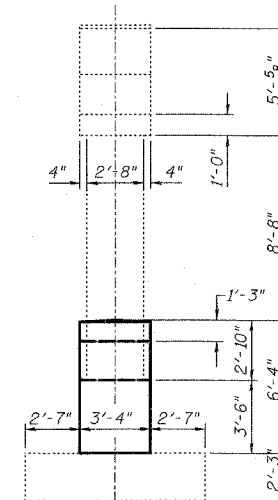
BILL OF MATERIAL

Bar	No.	Size	Length	Shape
d(E)	8	#6	2'-9"	—
d1(E)	20	#6	1'-9"	—
d2(E)	28	#4	2'-7"	—
h(E)	4	#4	23'-3"	—
h1(E)	2	#4	6'-7"	—
v(E)	4	#4	6'-0"	—
s(E)	14	#5	8'-1"	—
Item		Unit	Total	
Concrete Structures		Cu. Yd.	6.6	
Concrete Removal		Cu. Yd.	0.9	
Reinforcing Bars, Epoxy Coated		Pound	340	
Structural Repair of Concrete (Depth Equal to or Less Than 5")		Sq. Ft.	29.0	



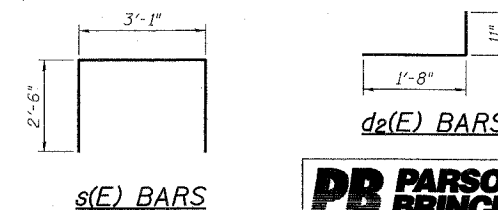
PIER ELEVATION  
(Looking West)

(Reinforcement Not Shown)



END VIEW  
(Looking North)

(Reinforcement Not Shown)



s(E) BARS

d2(E) BARS



PIER 2 REPAIR DETAILS  
PLAINFIELD ROAD OVER I-55  
SECTION 99 (I&2) WRS-1  
WILL COUNTY  
STA. 699+98.09  
STRUCTURE NO. 099-0176

DESIGNED	S.CHELBIAN
CHECKED	J.GRAINAWI
DRAWN	D.C.PATEL
CHECKED	J.GRAINAWI

Date: 2/23/2007