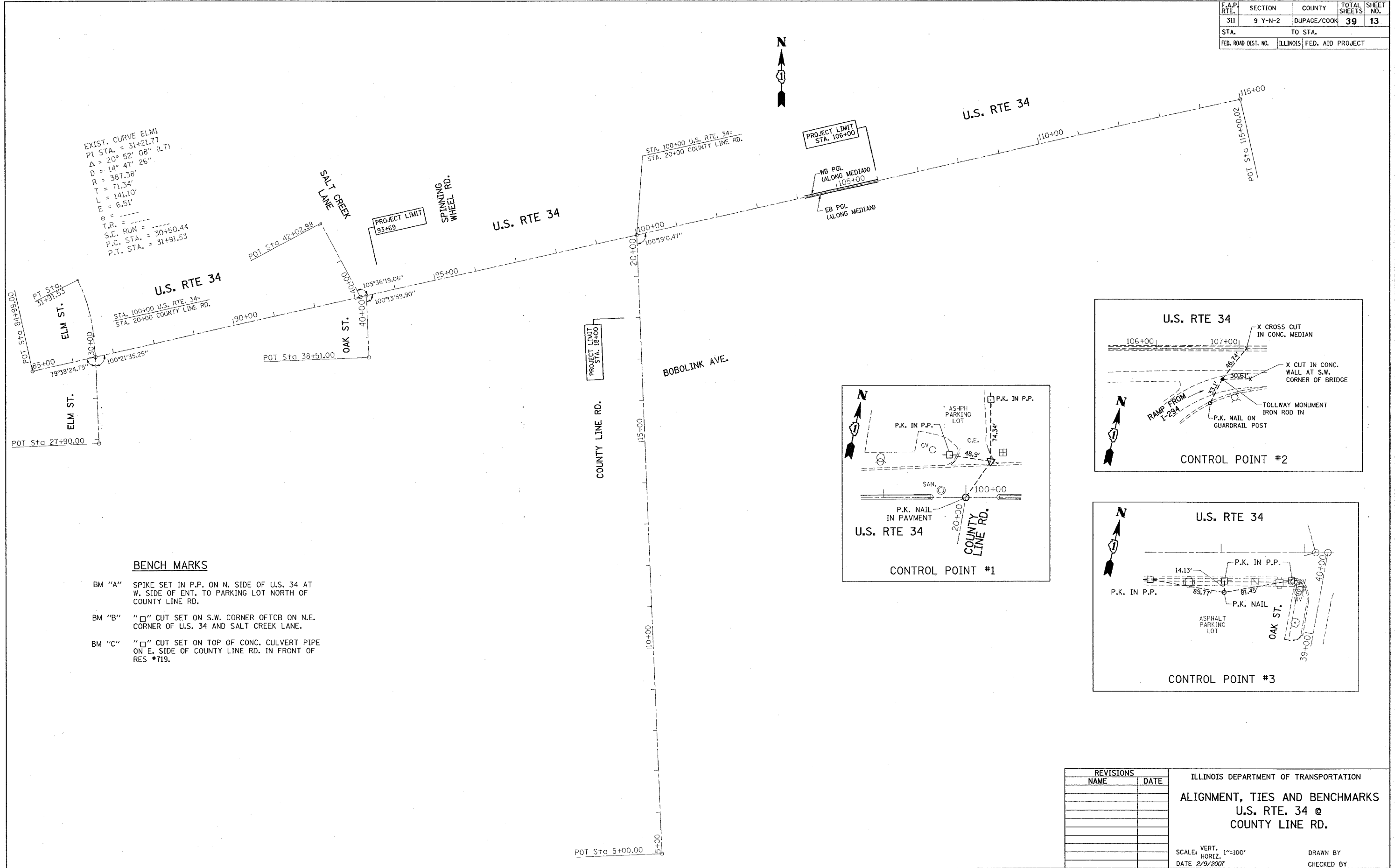
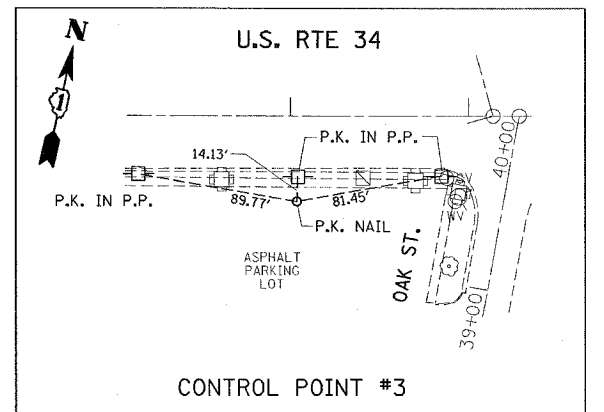
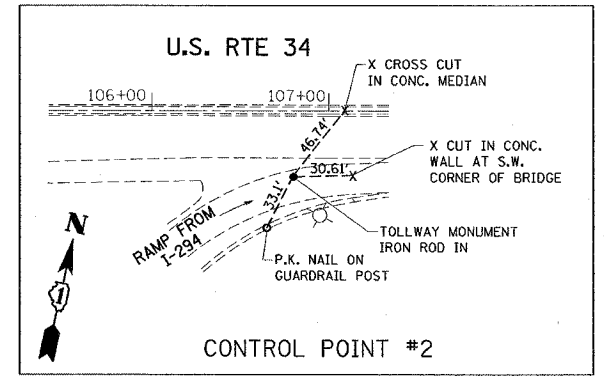
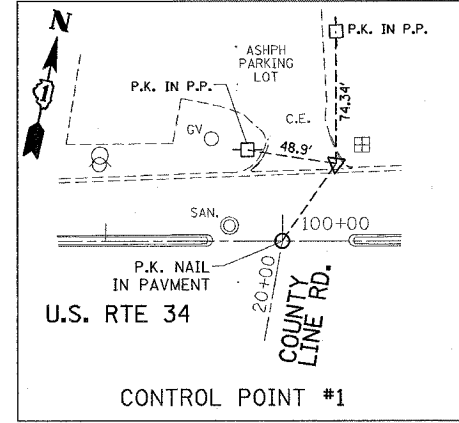


F.A.P. RTE.	SECTION	COUNTY	TOTAL SHEETS	SHEET NO.
311	9 Y-N-2	DUPAGE/COOK	39	13
STA.		TO STA.		
FED. ROAD DIST. NO.		ILLINOIS FED. AID PROJECT		



**BENCH MARKS**

- BM "A" SPIKE SET IN P.P. ON N. SIDE OF U.S. 34 AT W. SIDE OF ENT. TO PARKING LOT NORTH OF COUNTY LINE RD.
- BM "B" "□" CUT SET ON S.W. CORNER OF TCB ON N.E. CORNER OF U.S. 34 AND SALT CREEK LANE.
- BM "C" "□" CUT SET ON TOP OF CONC. CULVERT PIPE ON E. SIDE OF COUNTY LINE RD. IN FRONT OF RES #719.



PLOT DATE = 2/9/2007  
 FILE NAME = c:\projects\10800830\shu\_rch\ubdgn  
 PLOT SCALE = 1/8"=100'  
 USER NAME = beaver-d1

REVISIONS	
NAME	DATE

ILLINOIS DEPARTMENT OF TRANSPORTATION  
**ALIGNMENT, TIES AND BENCHMARKS**  
**U.S. RTE. 34 @**  
**COUNTY LINE RD.**

SCALE: VERT. 1"=100'  
 HORIZ. 1"=100'  
 DATE 2/9/2007

DRAWN BY  
 CHECKED BY