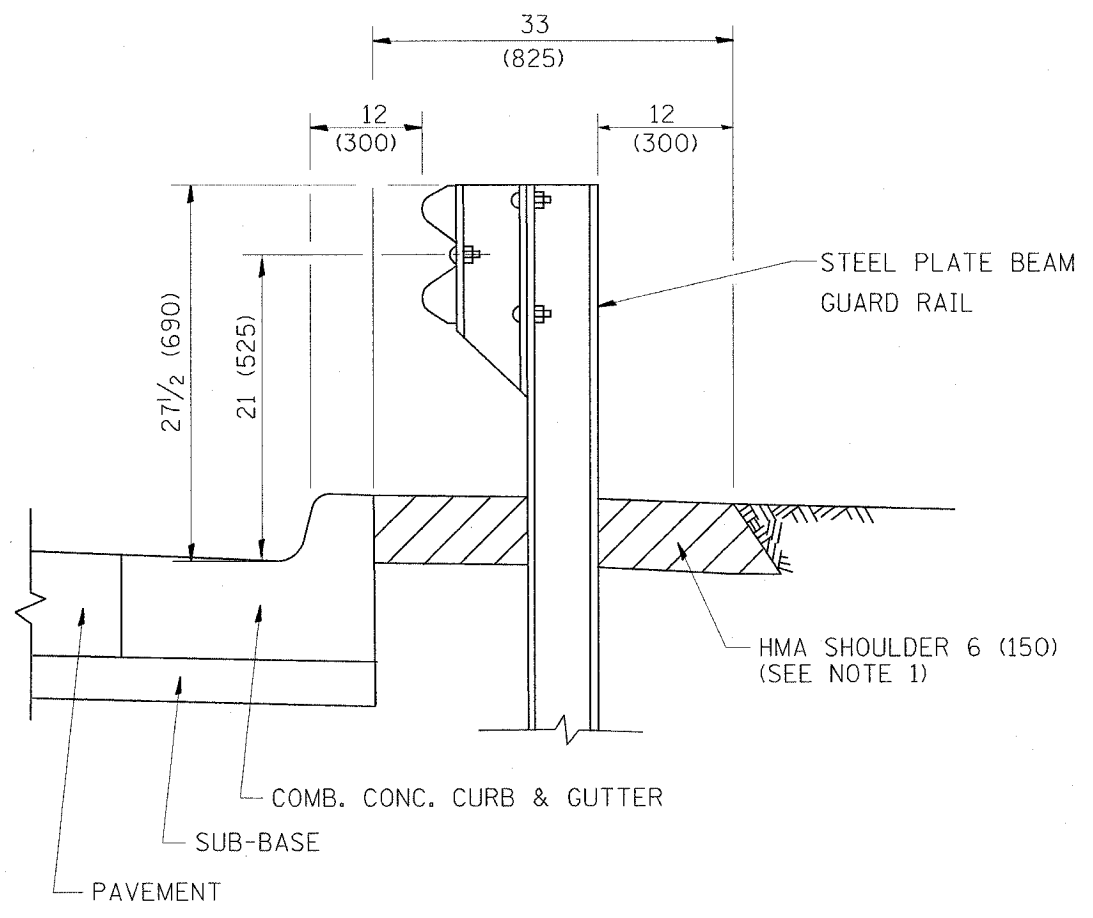


| | | | | |
|-----------------------|---------|---------------------------|--------------|-----------|
| CONTRACT NO. 62911 | | | | |
| F.A.P. RTE. | SECTION | COUNTY | TOTAL SHEETS | SHEET NO. |
| 311 | 9 Y-N-2 | COOK/DUPAGE | 39 | 25A |
| STA. | | TO STA. | | |
| FED. ROAD DIST. NO. 1 | | ILLINOIS FED. AID PROJECT | | |

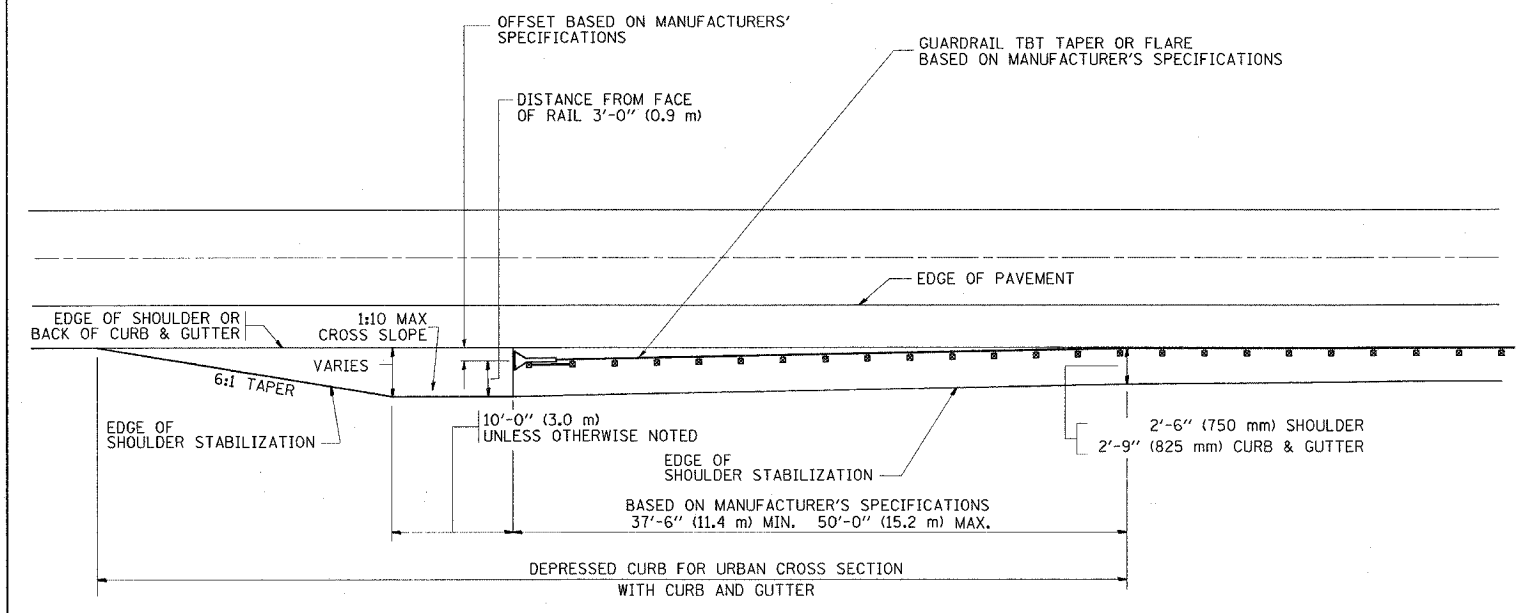


- NOTES:
1. THE HMA SHOULDER SHALL EXTEND UNDER THE TRAFFIC BARRIER TERMINAL
 2. GUARD RAIL MAY BE PLACED AT THE BACK OF CURB WHEN DIRECTED BY THE ENGINEER.

BASIS OF PAYMENT: HMA SHOULDER 6 (150) WILL BE PAID FOR AT THE CONTRACT UNIT PRICE PER SQUARE YARD (SQUARE METER) FOR "HOT-MIX ASPHALT SHOULDER 6" (150 mm)".

STEEL PLATE BEAM GUARD RAIL AND TRAFFIC BARRIER TERMINAL, OF THE TYPE SPECIFIED WILL BE PAID FOR SEPARATELY.

**DETAILS FOR STEEL PLATE BEAM
GUARD RAIL ADJACENT TO CURB AND GUTTER**
[FOR ROADWAY SPEED 35 MPH (60 kmh) TO 45 MPH (70 kmh)]



STABILIZATION AT TBT TY. 1 SPL.

TBT = TRAFFIC BARRIER TERMINAL
ALL DIMENSIONS ARE IN INCHES (MILLIMETERS) UNLESS OTHERWISE SHOWN.

| REVISIONS | |
|------------|----------|
| NAME | DATE |
| M. DE YONG | 09-22-90 |
| M. DE YONG | 07-14-92 |
| R. SHAH | 09/09/94 |
| R. SHAH | 10/25/94 |
| R. SHAH | 02/23/95 |
| A. ABBAS | 03/21/97 |
| E. GOMEZ | 08/28/03 |
| R. BORO | 01/01/07 |

ILLINOIS DEPARTMENT OF TRANSPORTATION
**DETAILS FOR
STEEL PLATE BEAM GUARD RAIL
ADJACENT TO CURB AND GUTTER
STABILIZATION AT TBT TY 1 SPL.**

SCALE: VERT. NONE
HORIZ. NONE
PLOT DATE: 3/2/2007
DRAWN BY Jls
CHECKED BY

PLOT DATE = 3/2/2007
 PLOT SCALE = 1/8" = 1'-0"
 USER NAME = amthk1