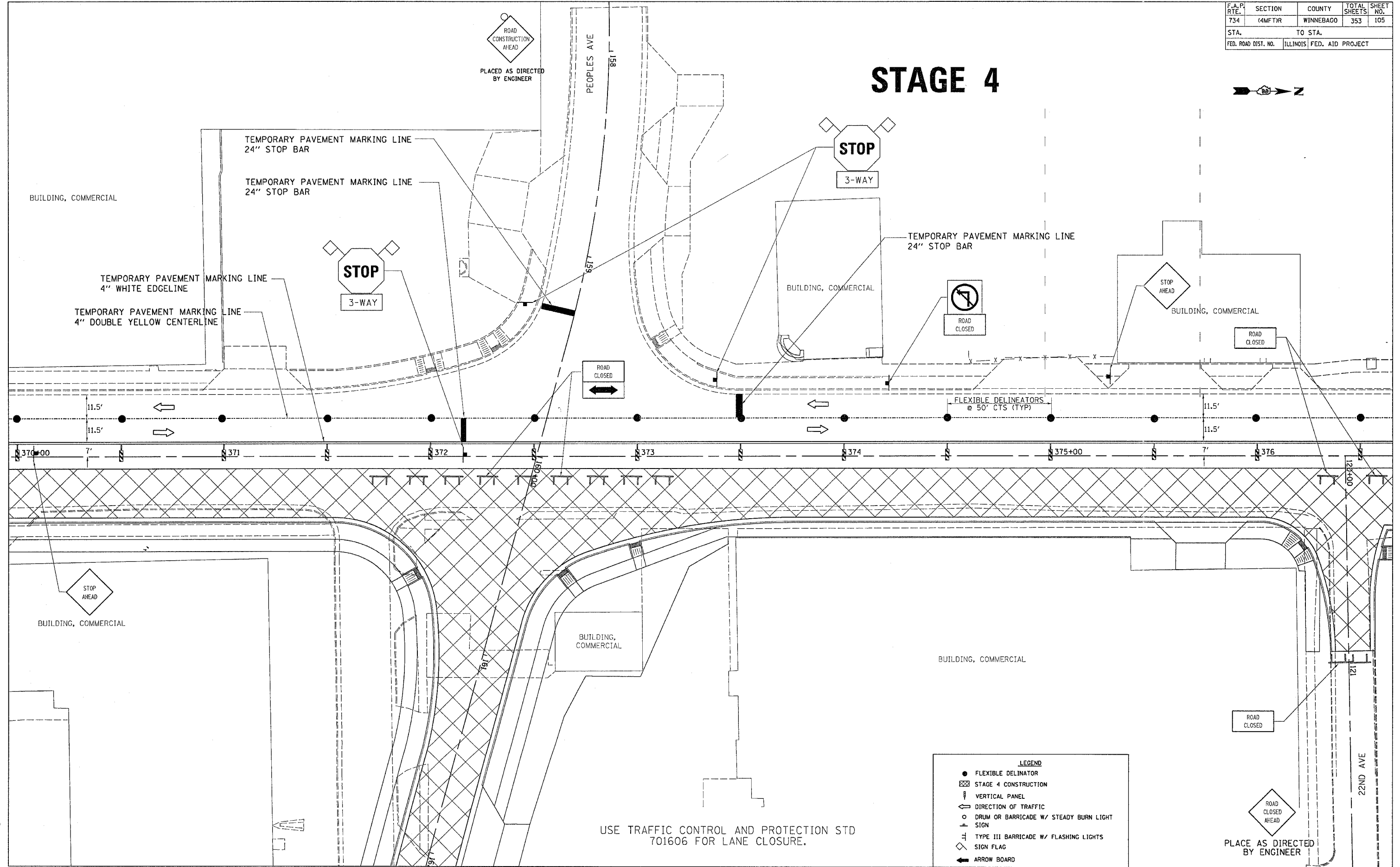


F.A.P. RTE.	SECTION	COUNTY	TOTAL SHEETS	SHEET NO.
734	4MFTR	WINNEBAGO	353	105
STA.		TO STA.		
FED. ROAD DIST. NO.		ILLINOIS FED. AID PROJECT		

STAGE 4



ROAD CONSTRUCTION AHEAD
PLACED AS DIRECTED BY ENGINEER

TEMPORARY PAVEMENT MARKING LINE
24" STOP BAR

TEMPORARY PAVEMENT MARKING LINE
24" STOP BAR

TEMPORARY PAVEMENT MARKING LINE
4" WHITE EDGELINE

TEMPORARY PAVEMENT MARKING LINE
4" DOUBLE YELLOW CENTERLINE

TEMPORARY PAVEMENT MARKING LINE
24" STOP BAR

ROAD CLOSED

ROAD CLOSED

ROAD CLOSED

FLEXIBLE DELINEATORS
@ 50' CTS (TYP)

11.5'

11.5'

11.5'

370+00

371

372

373

374

375+00

376

120+00

121

22ND AVE

- LEGEND**
- FLEXIBLE DELINEATOR
 - ▨ STAGE 4 CONSTRUCTION
 - ↑ VERTICAL PANEL
 - ← DIRECTION OF TRAFFIC
 - DRUM OR BARRICADE W/ STEADY BURN LIGHT SIGN
 - ⊥ TYPE III BARRICADE W/ FLASHING LIGHTS
 - ◇ SIGN FLAG
 - ➡ ARROW BOARD

USE TRAFFIC CONTROL AND PROTECTION STD 701606 FOR LANE CLOSURE.

ROAD CLOSED AHEAD
PLACE AS DIRECTED BY ENGINEER

PLOT DATE = Fri, Apr 27 10:30:45 2007
FILE NAME = c:\projects\110318599\110318599.dgn
PLOT SCALE = 20:0000 / IN.
USER NAME = gmartin