

F.A.P. RTE.	SECTION	COUNTY	TOTAL SHEETS	SHEET NO.
654	109 T	CARROLL	36	1

PROJECT ENGINEER: MASOOD AHMAD

SQUAD LEADER: AHMAD EL-AHMAD (815) 284-5944

STATE OF ILLINOIS  
DEPARTMENT OF TRANSPORTATION  
DIVISION OF HIGHWAYS

**PROPOSED  
HIGHWAY PLANS**

FAP ROUTE 654 (IL 73)  
SECTION 109 T  
PROJECT F-0654(015)  
CARROLL COUNTY

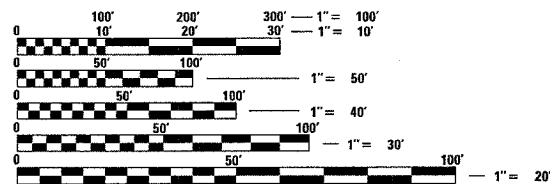
C-92-010-07

**INDEX OF SHEETS**

- 1 Cover Sheet
- 2-3 General Notes
- 4-5 Summary of Quantities
- 6-9 Typical Sections
- 10-13 Schedule of Quantities
- 14-15 Horizontal and Vertical Control
- 16-17 Plan and Profile Sheets
- 18 Erosion Control, Seeding, & R.O.W. Details
- 19 Pavement Elevation Sheet
- 20 Solar Power Flasher Detail
- 21-22 Boring Logs
- 23 Delineator and Post Orientation (Dist Std 37.4)
- 23 Typical Benching Detail on Existing Embankment (Dist Std 50.4)
- 23 Tree Replacement Schedule (Dist Std 90.4)
- 23 Drain for Agg Base Course (Dist Std 96.4)
- 24 Erosion Control Details for Silt Fence (Dist Std 29.2)
- 24 Witness Marker & Permanent survey Markers, Type II (Dist Std 66.2)
- 25 Three Center Curve Data (Dist Std 92.2)
- 26 Concrete Collars for Pipe or Box Culverts Extensions (Dist Std 33.1)
- 27 Traffic Control for Road Closure (Dist Std 40.1)
- 28-29 Typical Pavement Markings (Dist Std 41.1)
- 30 Detail of Precast Concrete Box Culverts and End Sections (Dist Std 71.1)
- 31 Details of Planting and Bracing Tree Replacement Schedule (Dist Std 92.1)
- 32-36 Cross Sections

**STATE STANDARDS**

- 000001 - 04 Standard Symbols, Abbreviations, and Patterns
- 001001 - 01 Areas and Spacing for Reinforcement Bars
- 280001 - 03 Temporary Erosion Control Systems
- 515001 - 02 Name Plates for Bridges
- 542401 Metal End Sections for Pipe Culverts
- 630301 - 04 Shoulder Widening for Type I (special) Guardrail Terminals
- 635001 Delineators
- 635006 - 02 reflective and terminal marker placement
- 665001 - 01 Fence, Woven Wire
- 666001 Right-Of-Way Markers
- 667101 Permanent Survey Markers
- 701201 - 02 Typical Application of Traffic Control Standard
- 701301 - 02 Lane closure, 2L, 2W, Short Time Operations
- 701311 - 02 Lane Closure, 2L, 2W, Moving - Day Only
- 701326 - 02 Typical Application of Traffic Control Standard
- 702001 - 06 Traffic Control Devices
- 720011 Metal Posts for Signs, Markers & Delineators
- 728001 Telescoping Steel Sign Support
- 729001 Application Types A and B Metal Posts (for signs and markers)

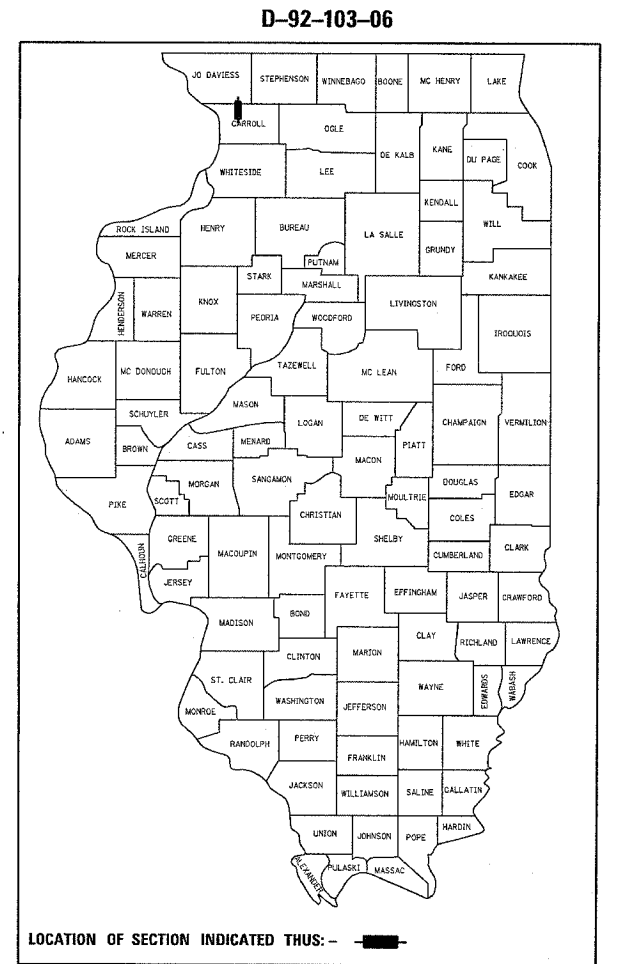
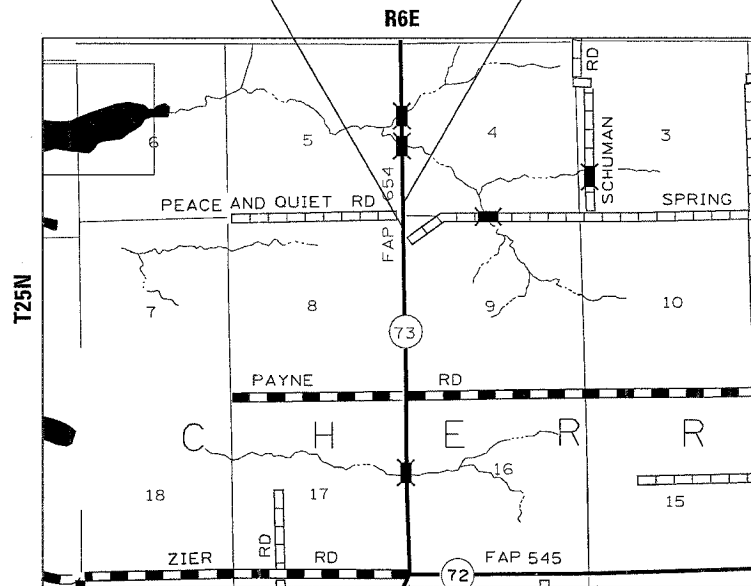


FULL SIZE PLANS HAVE BEEN PREPARED USING STANDARD ENGINEERING SCALES. REDUCED SIZED PLANS WILL NOT CONFORM TO STANDARD SCALES. IN MAKING MEASUREMENTS ON REDUCED PLANS, THE ABOVE SCALES MAY BE USED.

J.U.L.I.E.  
JOINT UTILITY LOCATION INFORMATION FOR EXCAVATION  
1-800-892-0123

CHERRY GROVE TOWNSHIP, SECTION 4, 5, 8  
CONTRACT NO. 64C60

IMPROVEMENT BEGINS STA 324+20  
IMPROVEMENT ENDS STA 330+50



STATE OF ILLINOIS  
DEPARTMENT OF TRANSPORTATION  
DIVISION OF HIGHWAYS

SUBMITTED March 19 20 07

George F. Ryan  
DEPUTY DIRECTOR OF HIGHWAYS, REGION ENGINEER

May 11, 20 07  
Eric E. Harold  
ENGINEER OF DESIGN AND ENVIRONMENT

May 11, 20 07  
Milton R. See, P.E./R.D.  
DIRECTOR OF HIGHWAYS, CHIEF ENGINEER

**PRINTED BY THE AUTHORITY  
OF THE STATE OF ILLINOIS**

GROSS LENGTH OF PROJECT = 630.0 LIN. FT. = 0.119 MI.  
NET LENGTH = 630.0 LIN. FT. = 0.119 MI.