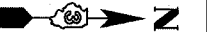


GENERAL NOTES

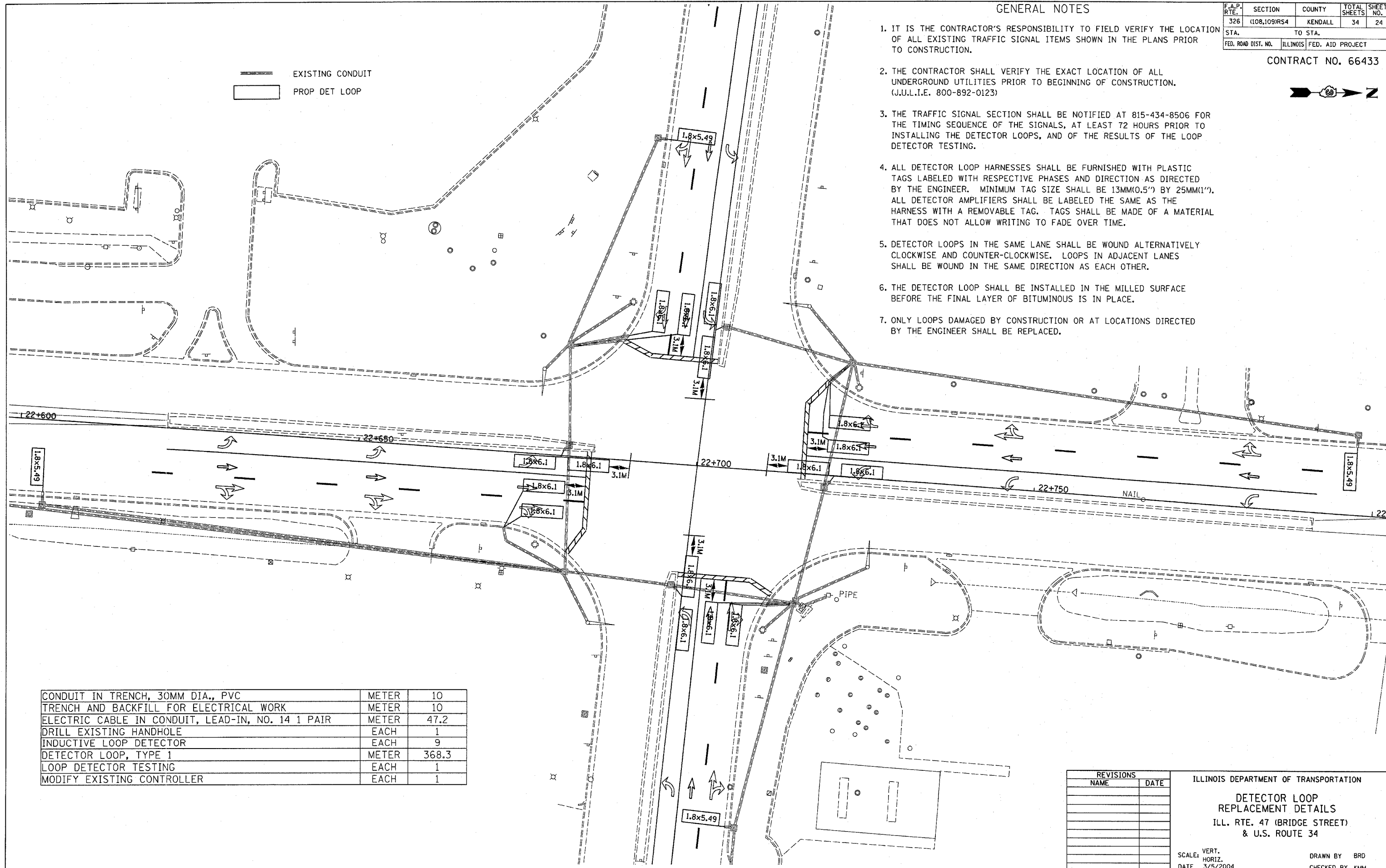
F.A.P. RTE.	SECTION	COUNTY	TOTAL SHEETS	SHEET NO.
326	(108,109)RS4	KENDALL	34	24
STA.	TO STA.			
FED. ROAD DIST. NO.	ILLINOIS	FED. AID PROJECT		

CONTRACT NO. 66433



1. IT IS THE CONTRACTOR'S RESPONSIBILITY TO FIELD VERIFY THE LOCATION OF ALL EXISTING TRAFFIC SIGNAL ITEMS SHOWN IN THE PLANS PRIOR TO CONSTRUCTION.
2. THE CONTRACTOR SHALL VERIFY THE EXACT LOCATION OF ALL UNDERGROUND UTILITIES PRIOR TO BEGINNING OF CONSTRUCTION. (J.U.L.I.E. 800-892-0123)
3. THE TRAFFIC SIGNAL SECTION SHALL BE NOTIFIED AT 815-434-8506 FOR THE TIMING SEQUENCE OF THE SIGNALS, AT LEAST 72 HOURS PRIOR TO INSTALLING THE DETECTOR LOOPS, AND OF THE RESULTS OF THE LOOP DETECTOR TESTING.
4. ALL DETECTOR LOOP HARNESSES SHALL BE FURNISHED WITH PLASTIC TAGS LABELED WITH RESPECTIVE PHASES AND DIRECTION AS DIRECTED BY THE ENGINEER. MINIMUM TAG SIZE SHALL BE 13MM(0.5") BY 25MM(1"). ALL DETECTOR AMPLIFIERS SHALL BE LABELED THE SAME AS THE HARNESS WITH A REMOVABLE TAG. TAGS SHALL BE MADE OF A MATERIAL THAT DOES NOT ALLOW WRITING TO FADE OVER TIME.
5. DETECTOR LOOPS IN THE SAME LANE SHALL BE WOUND ALTERNATIVELY CLOCKWISE AND COUNTER-CLOCKWISE. LOOPS IN ADJACENT LANES SHALL BE WOUND IN THE SAME DIRECTION AS EACH OTHER.
6. THE DETECTOR LOOP SHALL BE INSTALLED IN THE MILLED SURFACE BEFORE THE FINAL LAYER OF BITUMINOUS IS IN PLACE.
7. ONLY LOOPS DAMAGED BY CONSTRUCTION OR AT LOCATIONS DIRECTED BY THE ENGINEER SHALL BE REPLACED.

— EXISTING CONDUIT
 □ PROP DET LOOP



CONDUIT IN TRENCH, 30MM DIA., PVC	METER	10
TRENCH AND BACKFILL FOR ELECTRICAL WORK	METER	10
ELECTRIC CABLE IN CONDUIT, LEAD-IN, NO. 14 1 PAIR	METER	47.2
DRILL EXISTING HANDHOLE	EACH	1
INDUCTIVE LOOP DETECTOR	EACH	9
DETECTOR LOOP, TYPE 1	METER	368.3
LOOP DETECTOR TESTING	EACH	1
MODIFY EXISTING CONTROLLER	EACH	1

REVISIONS	
NAME	DATE

ILLINOIS DEPARTMENT OF TRANSPORTATION
 DETECTOR LOOP
 REPLACEMENT DETAILS
 ILL. RTE. 47 (BRIDGE STREET)
 & U.S. ROUTE 34

SCALE: VERT.
 HORIZ.
 DATE 3/5/2004

DRAWN BY BRD
 CHECKED BY KMM