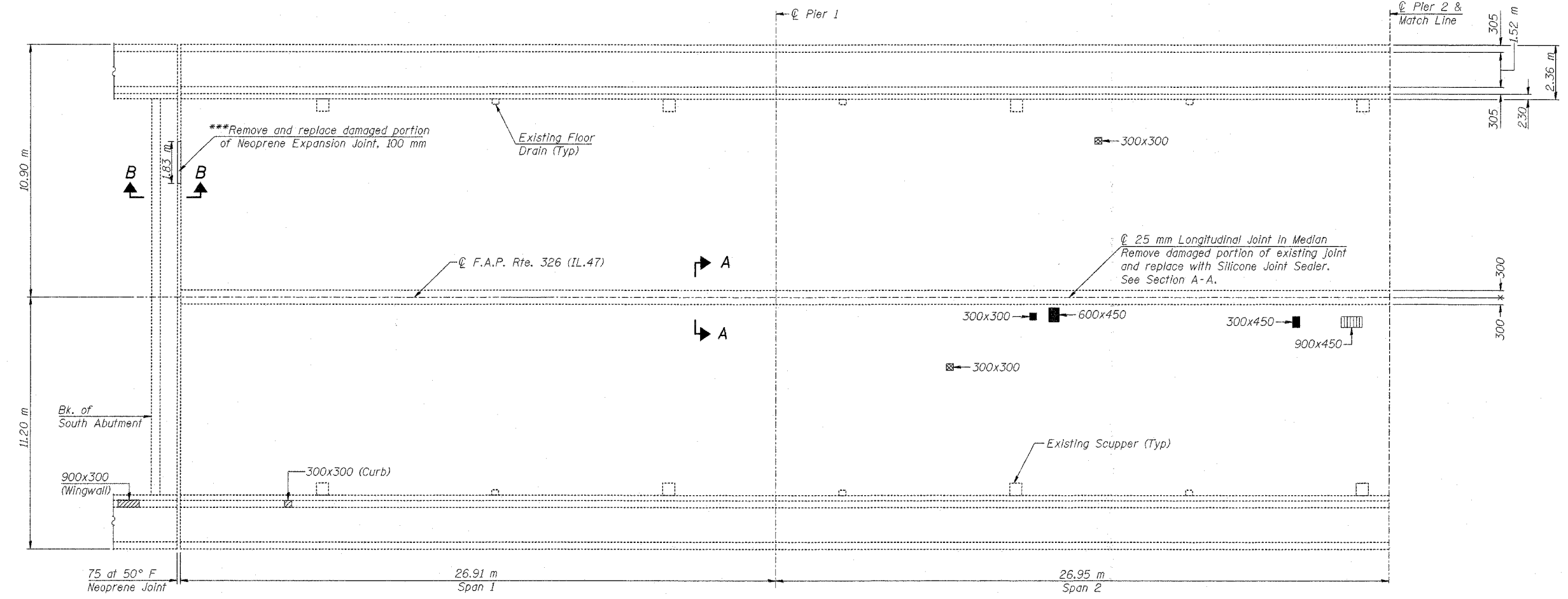


***The Contractor shall provide the replacement joint of the original manufacturer and type. The replacement length is estimated. Actual length will depend on the length of section manufactured. See Special Provision.

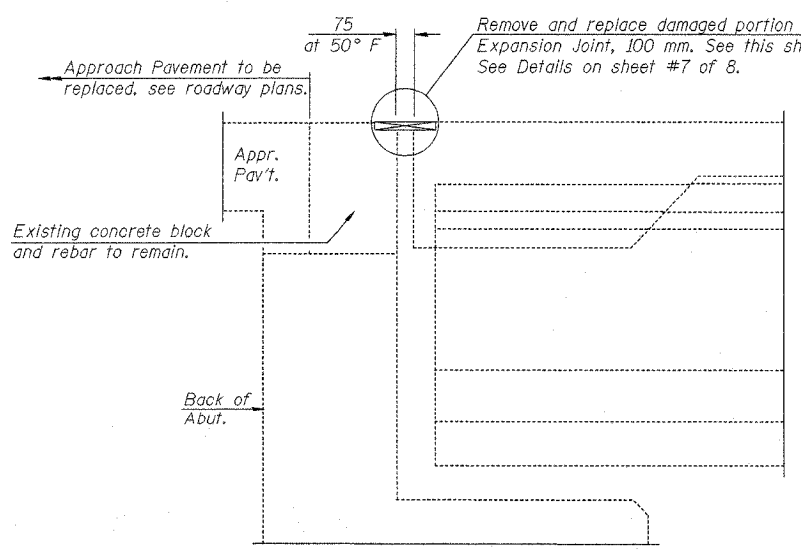


PARTIAL PLAN

BILL OF MATERIAL

Item	Unit	Total
Deck Slab Repair (Full Depth, Type I)	Sq. M	0.7
Deck Slab Repair (Partial)	Sq. M	0.4
Structural Repair of Concrete (Depth equal to or less than 125 mm)	Sq. M	0.4
Silicone Joint Sealer, 25 mm	Meter	54
Neoprene Exp. Jt., 100 mm	Meter	2

Deck Survey Date: 11/22/04



SECTION B-B AT ABUTMENT

Notes: For details of Deck Slab Repair see Special Provision for "Deck Slab Repair".

See Sheet #6 of 8 for Cross Section.

For Sec. A-A see Sheet #3 of 8.

The quantities shown for estimating purposes only. Area to be repaired will be determined by the Engineer at the time of Construction. Actual repair locations shall be shown on the same as-built plans.

When replacing a Neoprene Expansion Joint, existing anchor bolts will need to be cut flush against the concrete and new anchor bolts will need to be epoxy grouted in between the existing anchor bolts.

LEGEND

- * [Symbol] Deck Slab Repair (Partial)
- [Symbol] Deck Slab Repair (Full Depth, Type I) (In areas without planks)
- ** [Symbol] Deck Slab Repair (Full Depth, Type I) (In areas with planks)
- [Symbol] Structural Repair of Concrete (Depth equal to or less than 125 mm)

* Only areas between Beams 6 and 7 are included in this pay item.

** Paid for as indicated on sheet 6 of 7.

LIN ENGINEERING, LTD.
 200 N. Chestnut
 Chicago, Illinois 60629
 (312) 463-8888 FAX (312) 463-0728
 Designed By: STD Checked By: MTH Drawn By: JMO
 Date: 01/05 File: 0470048.DWG

REVISIONS	
NAME	DATE

ILLINOIS DEPARTMENT OF TRANSPORTATION
DECK REPAIR-1
 F.A.P. 326 (IL RTE. 47)
 OVER FOX RIVER
 SECTION (108,109)RS-4
 KENDALL COUNTY
 S.N. 047-0048