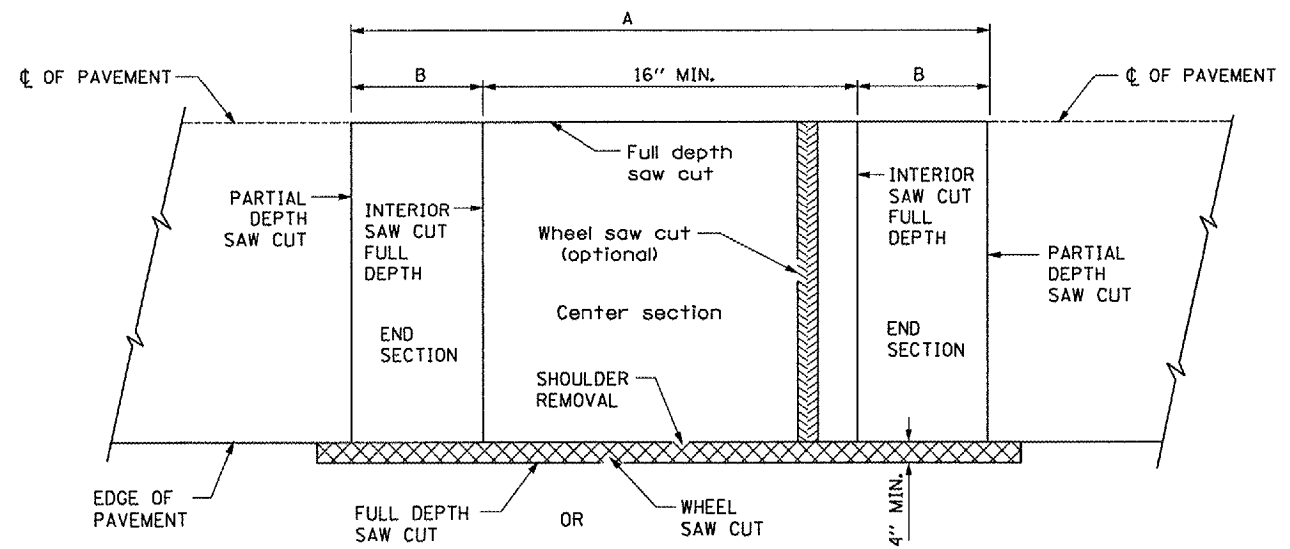
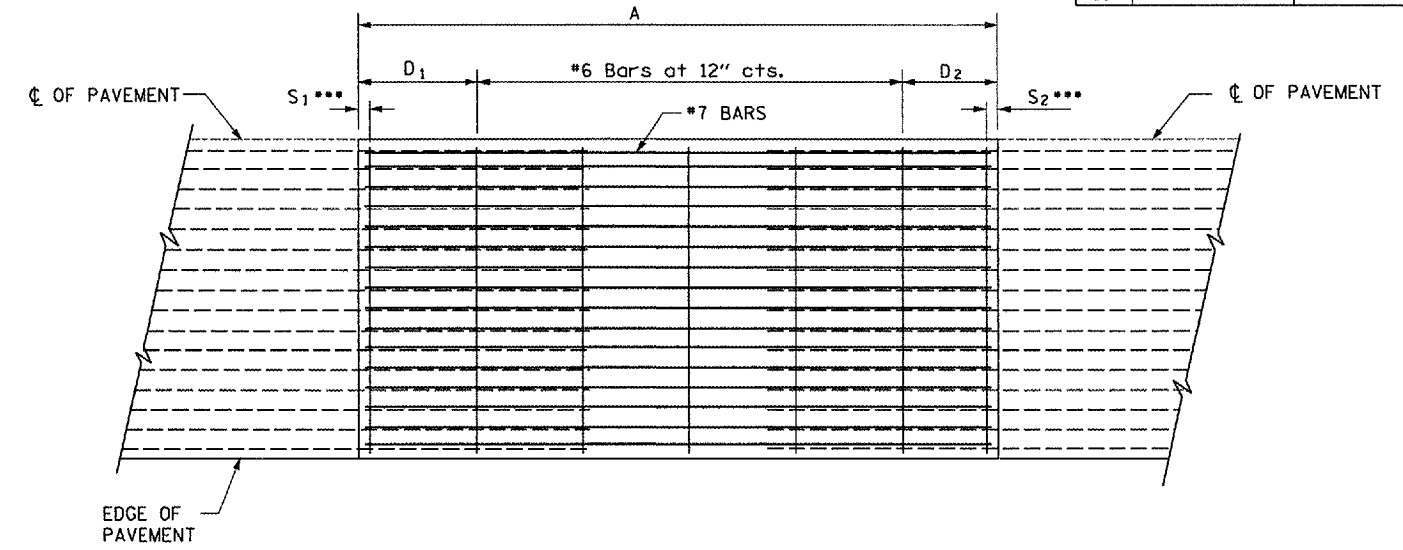


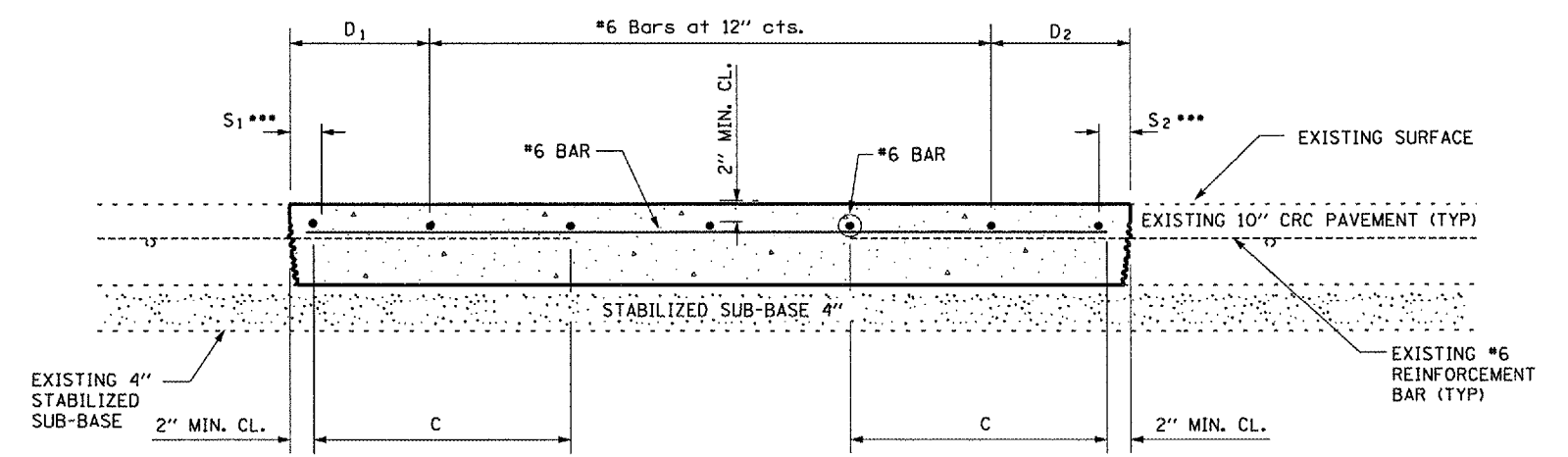
F.A.I. RTE.	SECTION	COUNTY	TOTAL SHEETS	SHEET NO.
55	(53-1)PATCHING	LIVINGSTON	9	8



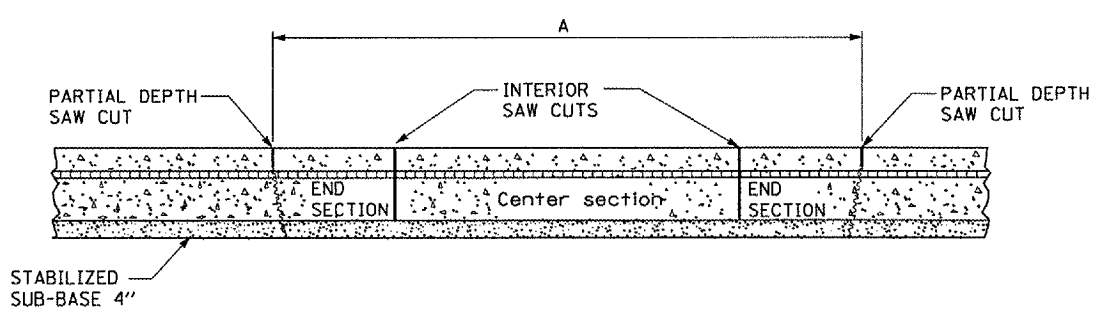
**EXISTING PAVEMENT SAWING DETAIL**  
(AGAINST BITUMINOUS SHOULDER)



**PROPOSED PAVEMENT DETAIL**  
(AGAINST CONCRETE SHOULDER)



**PROPOSED CLASS A PATCHING DETAIL**



**REMOVAL DETAIL**

EXISTING LONGITUDINAL REINFORCEMENT BARS	A (min.)	B (min.)	C (min.)
No. 6	6'-0"	21"	19"

- NOTES:**
- EVERY 3rd INTERSECTION MUST BE TIED
  - LAP NEW REINFORCEMENT WITH EXISTING LONGITUDINAL REINFORCEMENT
  - VARIABLES: WHERE S<sub>1</sub> AND S<sub>2</sub> ARE 2 1/2" MIN. AND 12" MAX. D<sub>1</sub> = 2(S<sub>1</sub>) AND D<sub>2</sub> = 2(S<sub>2</sub>)

REVISIONS	
NAME	DATE

ILLINOIS DEPARTMENT OF TRANSPORTATION  
**CLASS A PATCHING DETAILS**  
FAI ROUTE 55 (I-55)  
SECTION (53-1)PATCHING  
LIVINGSTON COUNTY

Date: February 16, 2007  
c:/projects/cmain08/cm306/details.dgn