

F.A.I. RTE.	SECTION	COUNTY	TOTAL SHEETS	SHEET NO.
55	(53-1)PATCHING	LIVINGSTON	9	1

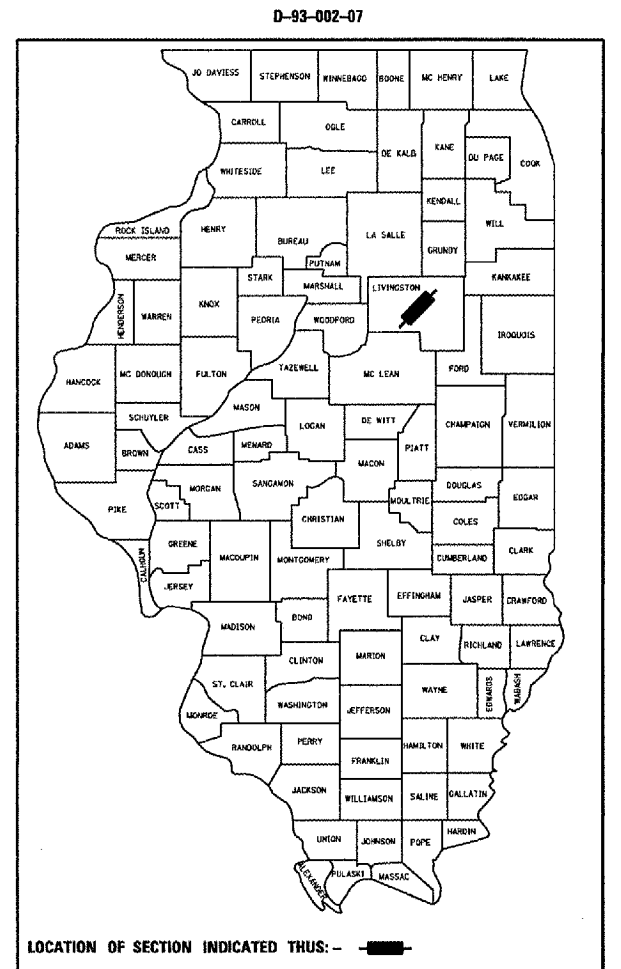
INDEX OF SHEETS

1. COVER SHEET
2. GENERAL NOTES
3. SUMMARY OF QUANTITIES
4. TYPICAL SECTIONS
5. SCHEDULES - CLASS A PATCHING NB
6. SCHEDULES - CLASS A PATCHING SB
7. SCHEDULES - PAVEMENT MARKING
8. CLASS A PATCHING DETAILS
9. PAVEMENT MARKING DETAILS

STANDARDS

- 000001-04 STANDARD SYMBOLS, ABBREVIATIONS AND PATTERNS
- 001001-01 AREAS OF REINFORCEMENT BARS
- 001006 DECIMAL OF AN INCH AND OF A FOOT
- 420001-06 PAVEMENT JOINTS
- 421001-01 BAR REINFORCEMENT FOR CRC PAVEMENT
- 442001-03 CLASS A PATCHES
- 701101-01 OFF-ROAD OPERATIONS MULTILANE, 4.5 m (15') TO 600 mm (24") FROM PAVEMENT EDGE
- 701106-01 OFF-ROAD OPERATIONS, MULTILANE, MORE THAN 4.5 m (15') AWAY
- 701400-02 APPROACH TO LANE CLOSURE, FREEWAY/EXPRESSWAY
- 701401-03 LANE CLOSURE, FREEWAY/EXPRESSWAY
- 701411-03 LANE CLOSURE, MULTILANE, AT ENTRANCE OR EXIT RAMP FOR SPEEDS P 45 MPH
- 701426-02 LANE CLOSURE, MULTILANE INTERMITTENT OR MOVING OPERATION, FOR SPEEDS P 45 MPH
- 702001-06 TRAFFIC CONTROL DEVICES

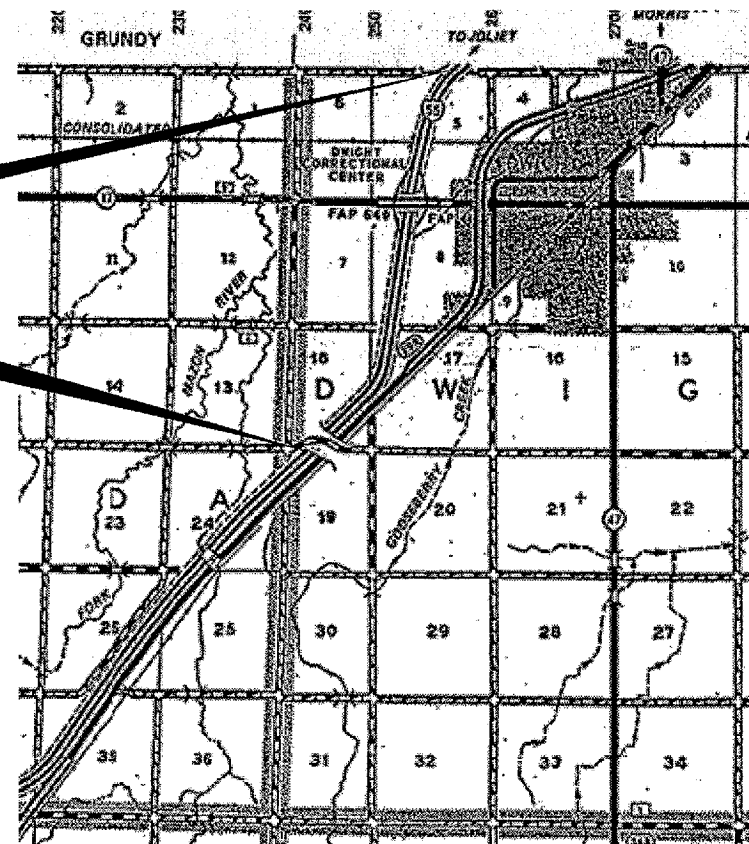
STATE OF ILLINOIS
DEPARTMENT OF TRANSPORTATION
DIVISION OF HIGHWAYS
PROPOSED
HIGHWAY PLANS
FAI ROUTE 55 (I-55)
SECTION (53-1)PATCHING
LIVINGSTON COUNTY
C-93-047-07
CLASS "A" PAVEMENT PATCHING



FUNCTIONAL CLASSIFICATION
 RURAL - INTERSTATE
 FAI ROUTE 55 (I-55)
 2005 ADT = 20400
 P.V = 69.1% M.U. = 26.5% S.U. = 4.4%

PROJECT ENDS
GRUNDY COUNTY LINE
(M.P. 218.07)

PROJECT BEGINS
2.0 MILS SOUTH OF
IL ROUTE 17 (M.P. 215)



LOCATION MAP
 NOT TO SCALE
 GROSS LENGTH = 162096 FT. = 3.07 MI.
 NET LENGTH = 1615 FT. = 0.12 MI

MICROFILMED _____
 REEL NUMBER _____
 AWARDED _____
 RESIDENT ENGINEER _____
 AS BUILT CHANGES WERE MADE
 ON THE FOLLOWING SHEETS _____

J.U.L.I.E.
JOINT UTILITY LOCATION INFORMATION FOR EXCAVATION
1-800-892-0123

DISTRICT 3 NO. (815) 434-6131
PROJECT ENGINEER: JOE KANNEL
UNIT CHIEF: RON WOODSHANK
TOWNSHIP: VARIOUS

CONTRACT NO. 66709

STATE OF ILLINOIS
 DEPARTMENT OF TRANSPORTATION
 DIVISION OF HIGHWAYS
 SUBMITTED April 2 2007
George Ryan
 DEPUTY DIRECTOR OF HIGHWAYS, REGION ENGINEER
May 11 2007
Eric E. Haran
 INTERIM ENGINEER OF DESIGN AND ENVIRONMENT
May 11 2007
Milton R. Sees, P.E.
 DIRECTOR OF HIGHWAYS, CHIEF ENGINEER

PRINTED BY THE AUTHORITY
OF THE STATE OF ILLINOIS

F.A.I. RTE.	SECTION	COUNTY	TOTAL SHEETS	SHEET NO.
55	(53-1)PATCHING	LIVINGSTON	9	2

GENERAL NOTES

PLAN DIMENSIONS AND DETAILS RELATIVE TO EXISTING ROADWAY OR STRUCTURE HAVE BEEN TAKEN FROM EXISTING PLANS AND ARE SUBJECT TO NOMINAL CONSTRUCTION VARIATIONS. IT SHALL BE THE CONTRACTOR'S RESPONSIBILITY TO VERIFY SUCH DIMENSIONS AND DETAILS IN THE FIELD AND TO MAKE NECESSARY APPROVED ADJUSTMENTS PRIOR TO CONSTRUCTION OR ORDERING OF MATERIALS. SUCH VARIATIONS SHALL NOT BE CAUSE FOR ADDITIONAL COMPENSATION FOR A CHANGE IN THE SCOPE OF THE WORK, HOWEVER, THE CONTRACTOR WILL BE PAID FOR THE QUANTITY ACTUALLY FURNISHED AT THE UNIT BID FOR THE WORK.

FOR STABILIZATION, ALL TYPE III BARRICADES SHALL REQUIRE A MINIMUM OF FOUR SAND BAGS PER BARRICADE.

THE CONTRACTOR SHALL BE RESPONSIBLE FOR PROTECTING UTILITY PROPERTY FROM CONSTRUCTION OPERATIONS AS OUTLINED IN ARTICLE 107.31 OF THE STANDARD SPECIFICATIONS. THE "JULIE" NUMBER IS 1-800-892-0123. A MINIMUM OF FORTY-EIGHT (48) HOURS ADVANCE NOTICE IS REQUIRED.

WHERE SECTION OR SUBSECTION MONUMENTS ARE ENCOUNTERED, THE ENGINEER SHALL BE NOTIFIED BEFORE SUCH MONUMENTS ARE REMOVED. THE CONTRACTOR SHALL PROTECT AND CAREFULLY PRESERVE ALL MONUMENTS UNTIL AN AUTHORIZED SURVEYOR OR AGENT HAS WITNESSED OR OTHERWISE REFERENCED THEIR LOCATION. THE CONTRACTOR SHALL BE RESPONSIBLE FOR HAVING AN AUTHORIZED SURVEYOR REESTABLISH ANY SECTION OR SUBSECTION MONUMENTS DESTROYED BY HIS OPERATIONS.

ABANDONED UNDERGROUND UTILITIES THAT CONFLICT WITH CONSTRUCTION SHALL BE DISPOSED OF OUTSIDE THE LIMITS OF THE RIGHT OF WAY ACCORDING TO ARTICLE 202.03 OF THE STANDARD SPECIFICATIONS AND AS DIRECTED BY THE ENGINEER. THIS WORK WILL NOT BE PAID FOR SEPARATELY BUT SHALL BE INCLUDED IN THE COST OF CLASS A PATCHING.

THE THICKNESS OF BITUMINOUS MIXTURES SHOWN ON THE PLANS IS THE NOMINAL THICKNESS. DEVIATIONS FROM THE NOMINAL THICKNESS WILL BE PERMITTED WHEN SUCH DEVIATIONS OCCUR DUE TO IRREGULARITIES IN THE EXISTING SURFACE OR BASE ON WHICH THE BITUMINOUS MIXTURE IS PLACED.

ANY REFERENCE TO A STANDARD IN THESE PLANS SHALL BE INTERPRETED TO MEAN THE EDITION AS INDICATED BY THE SUBNUMBER LISTED ON THE INDEX OF SHEETS OR THE COPY OF THE STANDARD INCLUDED IN THESE PLANS.

THE EXISTING SHOULDERS ARE LOW. IN THE EVENT THAT CONSTRUCTION OPERATIONS RESULT IN A DROP OFF GREATER THAN 3" BETWEEN THE EDGE OF PAVEMENT OR EDGE OF SHOULDER WITHIN 3' OF THE EDGE OF PAVEMENT AND THE EARTH OR AGGREGATE SHOULDERS, THEN THE DROP OFF SHALL BE PROTECTED ACCORDING TO ARTICLE 701.04(B)(1) OF THE STANDARD SPECIFICATIONS. THIS WORK WILL BE CONSIDERED AS INCLUDED IN THE CONTRACT UNIT PRICES FOR TRAFFIC CONTROL.

ALL NEW REINFORCEMENT BARS SHALL BE "EPOXY COATED" EXCEPT AS SHOWN.

EXISTING REINFORCEMENT BARS EXTENDING INTO REMOVAL AREA SHALL BE CLEANED, STRAIGHTENED AND INCORPORATED INTO THE NEW CONSTRUCTION. ANY REINFORCEMENT BARS THAT ARE DAMAGED DURING CONCRETE REMOVAL SHALL BE REPLACED WITH AN APPROVED BAR SPLICER OR ANCHORAGE SYSTEM. COST INCLUDED WITH CONCRETE REMOVAL.

DATE: 4.2.07
 PREPARED BY: Rich Powell
 DISTRICT STUDIES & PLANS ENGINEER
 EXAMINED BY: [Signature]
 DISTRICT CONSTRUCTION ENGINEER
[Signature]
 DISTRICT MATERIALS ENGINEER
[Signature]
 DISTRICT OPERATIONS ENGINEER

REVISIONS	
NAME	DATE

ILLINOIS DEPARTMENT OF TRANSPORTATION
GENERAL NOTES
 FAI ROUTE 55 (I-55)
 SECTION (53-1)PATCHING
 LIVINGSTON COUNTY

Date: February 16, 2007
 cs/projects/cmain08/cm306/details.dgn

F.A.I. RTE.	SECTION	COUNTY	TOTAL SHEETS	SHEET NO.
55	(53-1)PATCHING	LIVINGSTON	9	3

SUMMARY OF QUANTITIES

CONSTRUCTION CODE TYPE: **J000**

RURAL
100% STATE
TOTAL
QUANTITY

CODE NO.	ITEM	UNIT	QUANTITY
44200541	CLASS A PATCHES, TYPE II, 9 INCH	SQ YD	453
44200545	CLASS A PATCHES, TYPE III, 9 INCH	SQ YD	37
44200547	CLASS A PATCHES, TYPE IV, 9 INCH	SQ YD	374
44213000	PATCHING REINFORCEMENT	SQ YD	864
44213200	SAW CUTS	FOOT	4478
67100100	MOBILIZATION	L SUM	1
70100420	TRAFFIC CONTROL AND PROTECTION, STANDARD 701411	EACH	16
70100800	TRAFFIC CONTROL AND PROTECTION, STANDARD 701401	L SUM	1
70103815	TRAFFIC CONTROL SURVEILLANCE	CAL DA	11
* 78008210	POLYUREA PAVEMENT MARKING TYPE I - LINE 4"	FOOT	648
* 78008230	POLYUREA PAVEMENT MARKING TYPE I - LINE 6"	FOOT	522
Z0075310	TIE BARS 3/4"	EACH	140

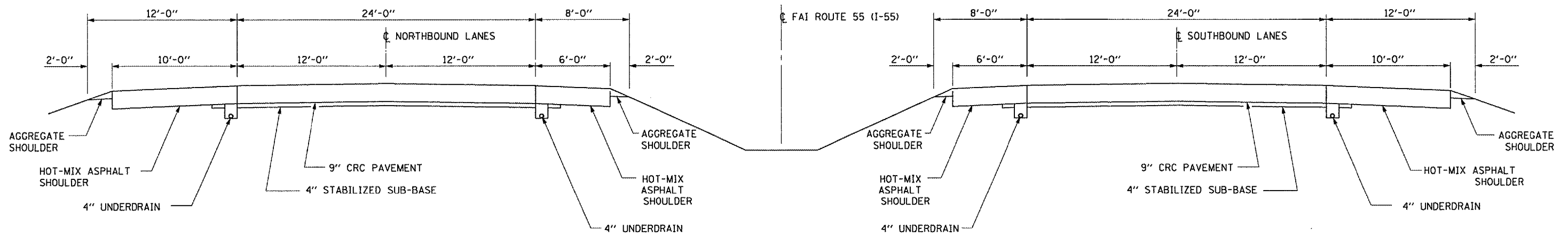
*SPECIALTY ITEM

Date: February 16, 2007
c:/projects/cmain08/cm306/details.dgn

REVISIONS	
NAME	DATE

ILLINOIS DEPARTMENT OF TRANSPORTATION
SUMMARY OF QUANTITIES
FAI ROUTE 55 (I-55)
SECTION (53-1)PATCHING
LIVINGSTON COUNTY

F.A.I. RTE.	SECTION	COUNTY	TOTAL SHEETS	SHEET NO.
55	(53-1)PATCHING	LIVINGSTON	9	4



TYPICAL SECTIONS

Date: February 16, 2007
 c:/projects/cmain08/cm306/details.dgn

REVISIONS	
NAME	DATE

ILLINOIS DEPARTMENT OF TRANSPORTATION
TYPICAL SECTIONS
 FAI ROUTE 55 (I-55)
 SECTION (53-1)PATCHING
 LIVINGSTON COUNTY

F.A.I. RTE.	SECTION	COUNTY	TOTAL SHEETS	SHEET NO.
55	(53-1)PATCHING	LIVINGSTON	9	5

SCHEDULE OF CLASS A PATCHING

LOCATION		PASSING LANE						DRIVING LANE					
MILE POST	LANE	CLASS A PATCHING			PATCH REINF.	SAW CUTS FOOT	TIE BARS EACH	CLASS A PATCHING			PATCH REINF.	SAW CUTS FOOT	TIE BARS EACH
		TYPE II 9"	TYPE III 9"	TYPE IV 9"				TYPE II 9"	TYPE III 9"	TYPE IV 9"			
		SQ YD	SQ YD	SQ YD	SQ YD	FOOT	EACH	SQ YD	SQ YD	SQ YD	SQ YD	FOOT	EACH
CONCRETE SECTION													
215.36	NB	11			11	72							
215.38	NB	8			8	66		8			8	66	
215.40	NB		21		21	96							
215.43	NB	11			11	72		11			11	72	
215.43	NB	8			8	66		8			8	66	
215.44	NB									40	40	138	15
215.45	NB			40	40	138	15			53	53	168	20
215.50	NB	13			13	78		13			13	78	
215.52	NB	8			8	66			16		16	84	
215.54	NB	8			8	66							
215.57	NB	8			8	66							
215.59	NB	13			13	78		13			13	78	
215.80	NB	8			8	66							
216.06	NB	8			8	66							
216.40	NB	8			8	66		13			13	78	
216.42	NB				0			8			8	66	
216.78	NB							13			13	78	
217.04	NB							11			11	72	
217.10	NB	8			8	66					8	66	
217.20	NB	8			8	66		8			8	66	
217.25	NB	8			8	66		8			8	66	
217.30	NB									67	67	198	25
217.45	NB									80	80	228	30
217.48	NB							13			13	78	
217.50	NB							13			13	78	
217.50	NB							8			8	66	
217.50	NB							13			13	78	
217.51	NB							13			13	78	
217.52	NB							8			8	66	
217.75	NB							8			8	66	
218.02	NB							13			13	78	
NB TOTAL		136	21	40	197	1260	15	205	16	240	461	2190	90

Date: February 16, 2007
c:/projects/cm306/details.dgn

REVISIONS	
NAME	DATE

ILLINOIS DEPARTMENT OF TRANSPORTATION
SCHEDULES
CLASS A PATCHING NB
 FAI ROUTE 55 (I-55)
 SECTION (53-1)PATCHING
 LIVINGSTON COUNTY

F.A.I. RTE.	SECTION	COUNTY	TOTAL SHEETS	SHEET NO.
55	(53-1)PATCHING	LIVINGSTON	9	6

SCHEDULE OF CLASS A PATCHING

LOCATION		PASSING LANE					DRIVING LANE						
MILE POST	LANE	CLASS A PATCHING			PATCH REINF.	SAW CUTS FOOT	TIE BARS EACH	CLASS A PATCHING			PATCH REINF. SQ YD	SAW CUTS FOOT	TIE BARS EACH
		TYPE II 9" SQ YD	TYPE III 9" SQ YD	TYPE IV 9" SQ YD				TYPE II 9" SQ YD	TYPE III 9" SQ YD	TYPE IV 9" SQ YD			
CONCRETE SECTION													
218.10	SB							13			13	68	
218.09	SB							8			8	60	
218.08	SB							8			8	60	
217.90	SB							11			11	64	
217.12	SB							8			8	60	
216.82	SB									27	27	88	10
215.90	SB	11			11	64		8			8	60	
215.55	SB		27		27	88	10			40	40	108	15
215.45	SB							8			8	60	
215.43	SB				8	60		8			8	60	
215.43	SB					0		8			8	60	
215.37	SB							13			13	68	
SB TOTAL		19		27	45	212	10	93		67	160	816	25

Date: February 16, 2007
c:/projects/cmain08/cm306/details.dgn

REVISIONS	
NAME	DATE

ILLINOIS DEPARTMENT OF TRANSPORTATION
SCHEDULES
CLASS A PATCHING SB
FAI ROUTE 55 (I-55)
SECTION (53-1)PATCHING
LIVINGSTON COUNTY

F.A.I. RTE.	SECTION	COUNTY	TOTAL SHEETS	SHEET NO.
55	(53-1)PATCHING	LIVINGSTON	9	7

SCHEDULE OF PAVEMENT MARKING

LOCATION		POLYUREA PAVEMENT MARKING TYPE 1, LINE 4"		POLYUREA PAVEMENT MARKING TYPE 1, LINE 6"
MILE POST	LANE	YELLOW	WHITE	WHITE
215.36	NB	8		8
215.38	NB	6	6	6
215.40	NB	16		16
215.43	NB	8	8	8
215.43	NB	6	6	6
215.44	NB		30	30
215.45	NB	30	40	40
215.50	NB	10	10	10
215.52	NB	6	12	12
215.54	NB	6		6
215.57	NB	6		6
215.59	NB	10	10	10
215.80	NB	6		6
216.06	NB	6		6
216.40	NB	6	10	10
216.42	NB		6	6
216.78	NB		10	10
217.04	NB		8	8
217.10	NB	6		6
217.20	NB	6	6	6
217.25	NB	6	6	6
217.30	NB		50	50
217.45	NB		60	60
217.48	NB		10	10
217.50	NB		10	10
217.50	NB		6	6
217.50	NB		10	10
217.51	NB		10	10
217.52	NB		6	6
217.75	NB		6	6
218.02	NB		10	10
SUBTOTAL		148	346	400
NB TOTAL		494		400

SCHEDULE OF PAVEMENT MARKING

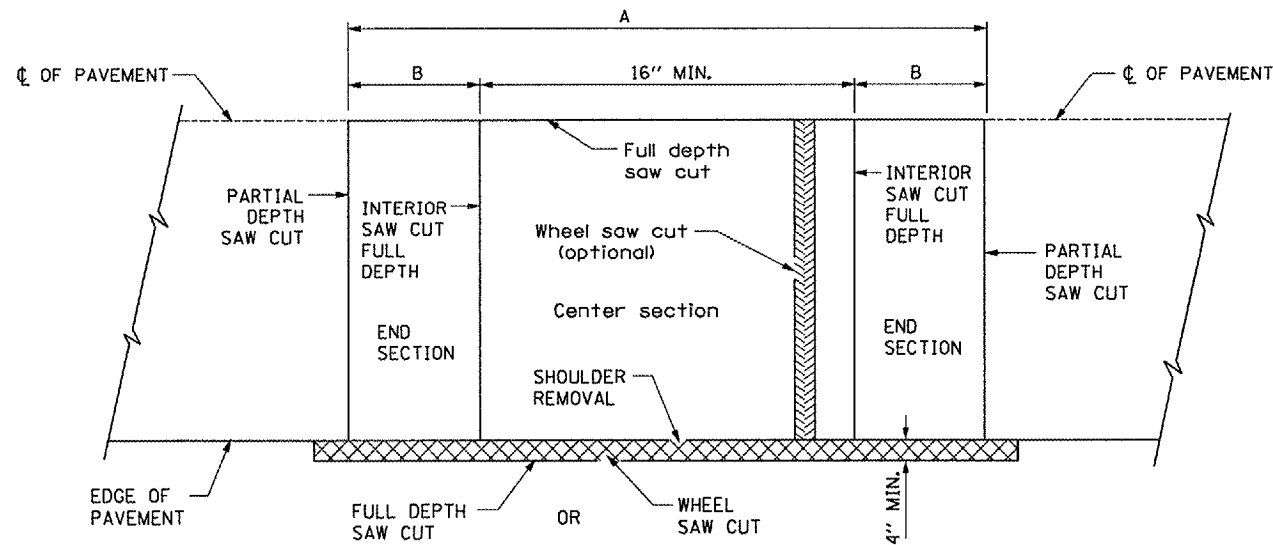
LOCATION		POLYUREA PAVEMENT MARKING TYPE 1, LINE 4"		POLYUREA PAVEMENT MARKING TYPE 1, LINE 6"
MILE POST	LANE	YELLOW	WHITE	WHITE
218.10	SB		10	10
218.09	SB		6	6
218.08	SB		6	6
217.90	SB		8	8
217.12	SB		6	6
216.82	SB		20	20
215.90	SB	8	6	8
215.55	SB	20	30	30
215.45	SB		6	6
215.43	SB	6	6	6
215.43	SB		6	6
215.37	SB		10	10
SUBTOTAL		34	120	122
SB TOTAL		154		122

Date: February 16, 2007
 c:\projects\cm08\cm306\details.dgn

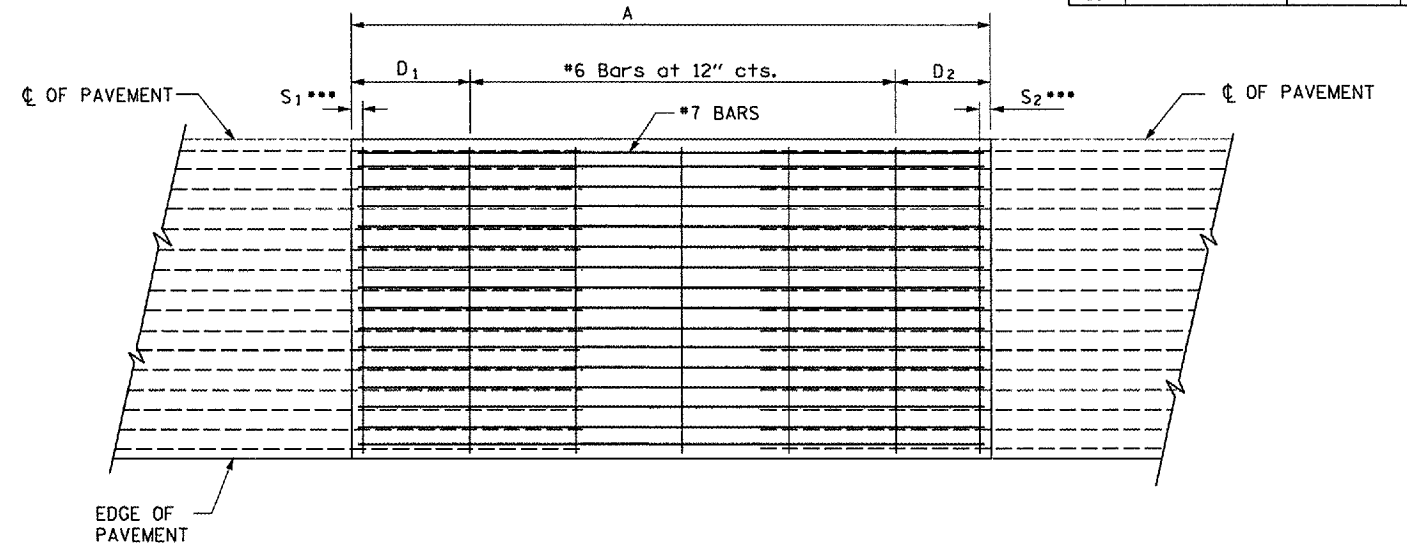
REVISIONS	
NAME	DATE

ILLINOIS DEPARTMENT OF TRANSPORTATION
SCHEDULES
PAVEMENT MARKING
 FAI ROUTE 55 (I-55)
 SECTION (53-1)PATCHING
 LIVINGSTON COUNTY

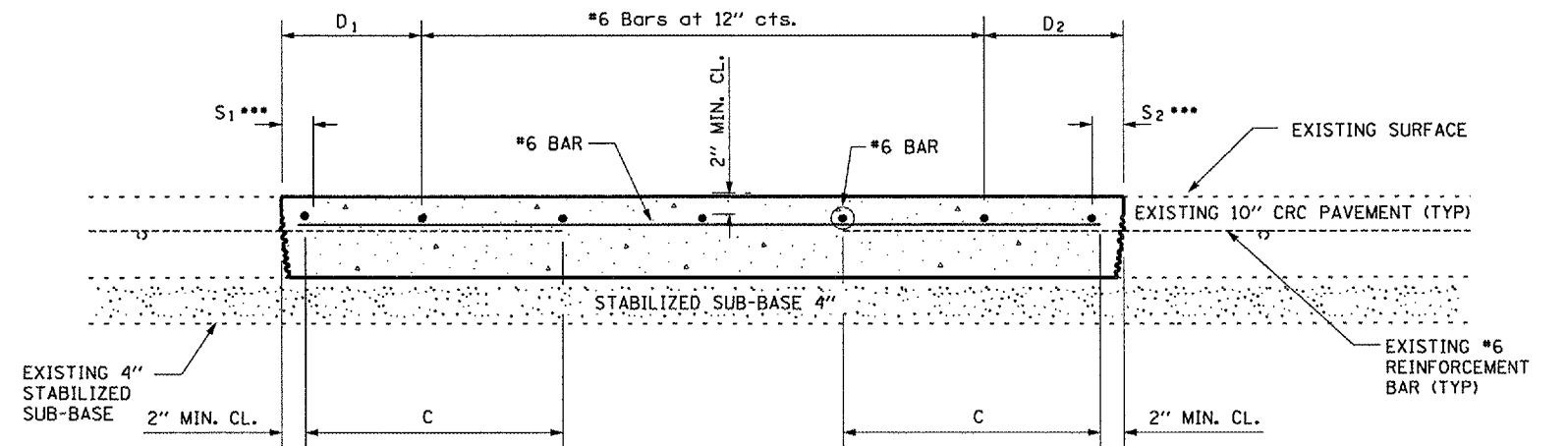
F.A.I. RTE.	SECTION	COUNTY	TOTAL SHEETS	SHEET NO.
55	(53-1)PATCHING	LIVINGSTON	9	8



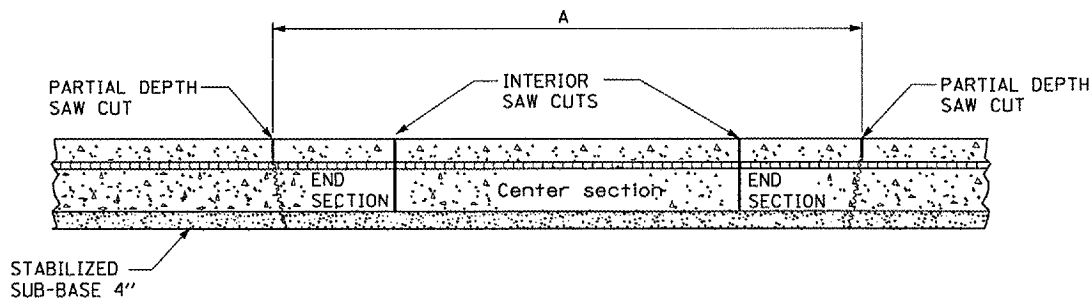
EXISTING PAVEMENT SAWING DETAIL
(AGAINST BITUMINOUS SHOULDER)



PROPOSED PAVEMENT DETAIL
(AGAINST CONCRETE SHOULDER)



PROPOSED CLASS A PATCHING DETAIL



REMOVAL DETAIL

EXISTING LONGITUDINAL REINFORCEMENT BARS	A (min.)	B (min.)	C (min.)
No. 6	6'-0"	21"	19"

NOTES:

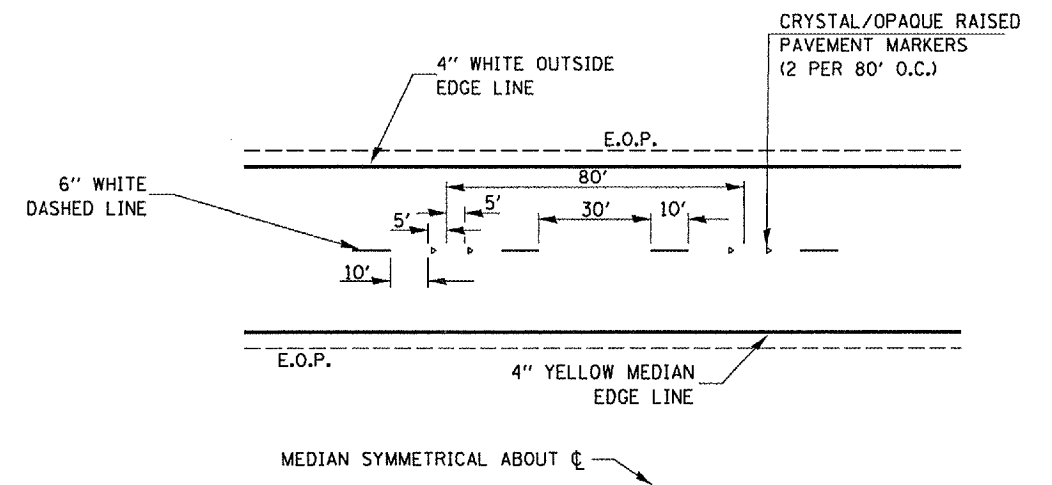
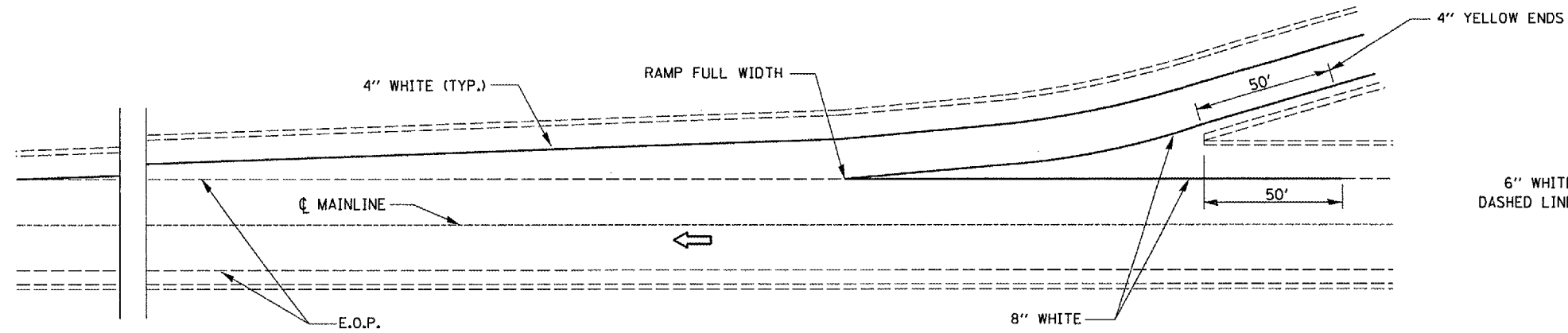
- EVERY 3rd INTERSECTION MUST BE TIED
- LAP NEW REINFORCEMENT WITH EXISTING LONGITUDINAL REINFORCEMENT
- VARIABLES: WHERE S₁ AND S₂ ARE 2 1/2" MIN. AND 12" MAX. D₁ = 2(S₁) AND D₂ = 2(S₂)

REVISIONS	
NAME	DATE

ILLINOIS DEPARTMENT OF TRANSPORTATION
CLASS A PATCHING DETAILS
FAI ROUTE 55 (I-55)
SECTION (53-1)PATCHING
LIVINGSTON COUNTY

Date: February 16, 2007
c:/projects/cmain08/cm306/details.dgn

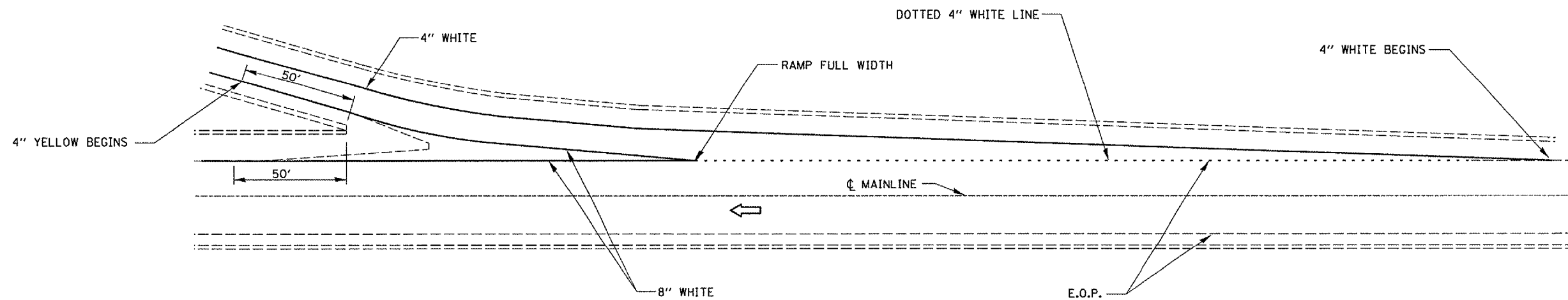
F.A.I. RTE.	SECTION	COUNTY	TOTAL SHEETS	SHEET NO.
55	(53-1)PATCHING	LIVINGSTON	9	9



TYPICAL PAVEMENT MARKING FOR ENTRANCE RAMP TERMINALS

TYPICAL PAVEMENT MARKINGS

NOTE:
 WHEN PATCHING IS ADJACENT TO 8" PAVEMENT MARKING LINE THE 8" STRIP SHALL BE REPLACED WITH TWO 4" LINES.
 RAISED REFLECTIVE PAVEMENT MARKERS THAT FALL WITHIN PATCHED BOUNDARIES WILL NOT BE REPLACED.



TYPICAL PAVEMENT MARKINGS FOR EXIT RAMP TERMINALS

REVISIONS	
NAME	DATE

ILLINOIS DEPARTMENT OF TRANSPORTATION
PAVEMENT MARKING DETAILS
 FAI ROUTE 55 (I-55)
 SECTION (53-1)PATCHING
 LIVINGSTON COUNTY

Date: February 16, 2007
 c:/projects/cmain08/cm306/details.dgn