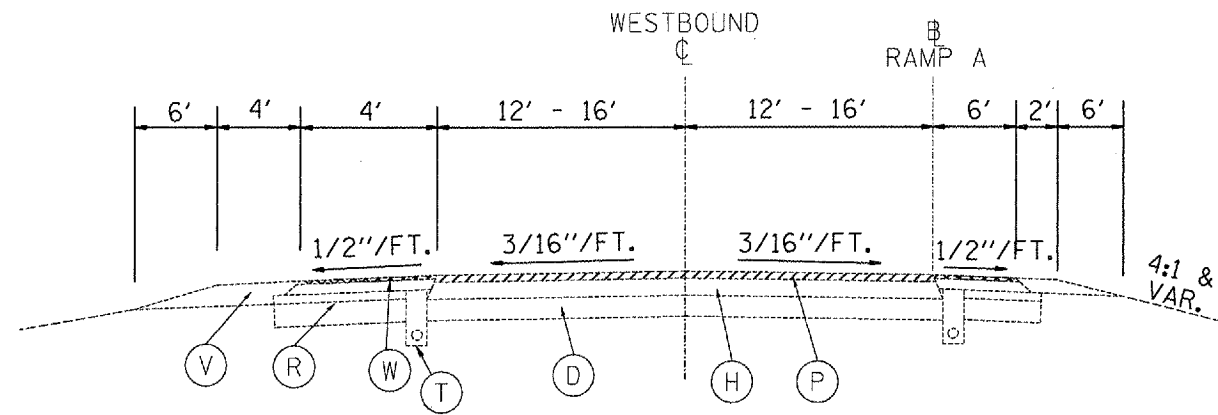
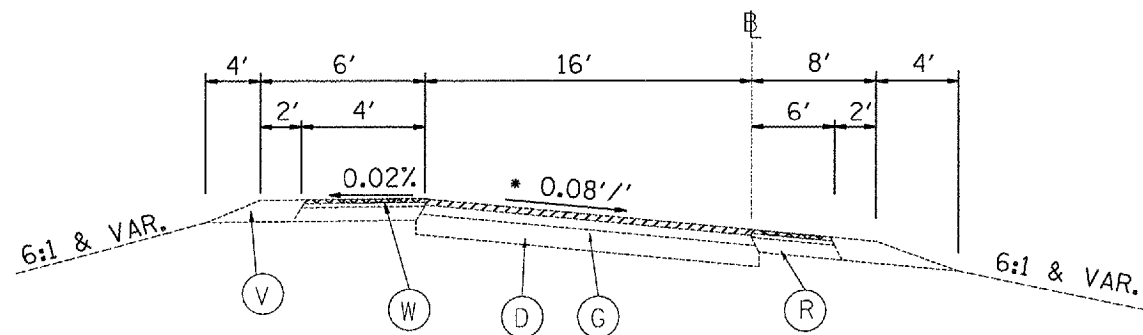


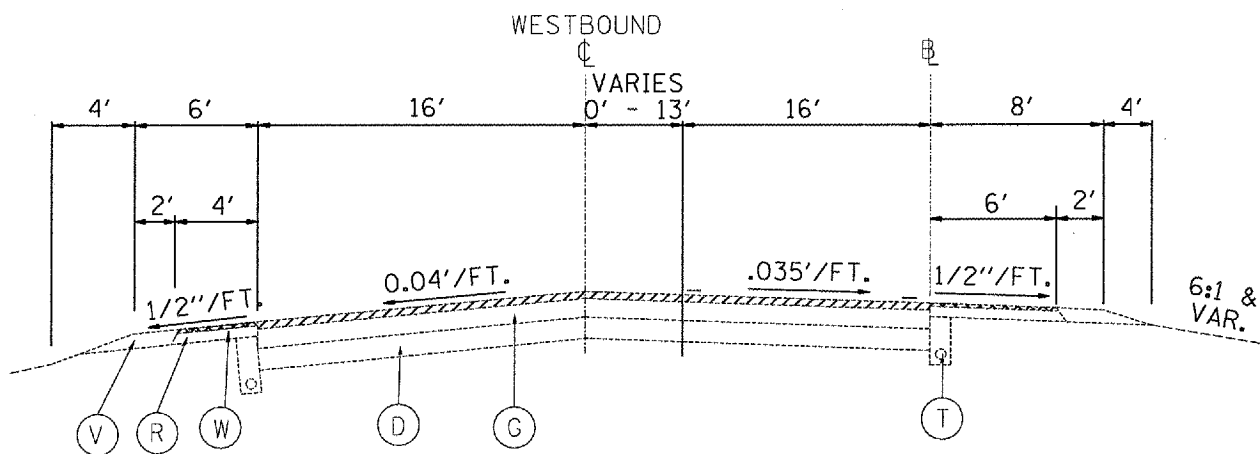
F.A.U. RTE.	SECTION	COUNTY	TOTAL SHEETS	SHEET NO.
• 35RS-5,36RS-8	TAZEWELL	90	8	
STA. TO STA.				
FED. ROAD DIST. NO.		ILLINOIS FED. AID PROJECT		
• 6717 (BUS 24) & 6713 (IL 8)				



RAMP A STA. 0+00 TO STA. 3+85.33
(RAMP A STA. 0+00 = BUS U.S. RTE. 24 STA. 449+26.41)



SUPERELEVATED SECTION
RAMP B STA. 2+14 TO STA. 6+35
RAMP B STA. 6+35 - 20+65
RAMP B STA. 20+65 TO 23+61
* DIRECTION OF SLOPE MAY VARY



TANGENT SECTION
RAMP A STA. 3+85.33 TO STA. 10+00
STA. EQ. 8+00 BK RAMP A = STA. 0+00 AH RAMP B
RAMP B STA. 0+00 - STA. 2+00

EXISTING LEGEND

- (A) GRANULAR SUB-BASE, 4"
- (B) SUB-BASE GRANULAR MATERIAL, TYPE C
- (C) SUB-BASE GRANULAR MATERIAL, TYPE A, 12"
- (D) LIME MODIFIED SOIL, 12"
- (E) P.C.C. PAVEMENT, 10"
- (F) P.C.C. PAVEMENT 8"
- (G) BIT. CONC. PAVEMENT; 13 1/4" BINDER, 1 1/2" SURFACE
- (H) BIT. CONC. BINDER COURSE, TYPE 2, 11 1/2"
- (I) BITUMINOUS BASE COURSE, 10 3/4"
- (J) LEVELING BINDER (MACHINE METHOD), TYPE 2
- (K) LEVELING BINDER (MACHINE METHOD), TYPE 2, 3/4"
- (L) BITUMINOUS BASE COURSE, 8"
- (M) BITUMINOUS BASE COURSE, 6"
- (N) P.C.C. BASE COURSE, 8 1/2"
- (O) BIT. CONC. BINDER COURSE, TYPE 2, 1 1/2"
- (P) BCSC, MIX D, CL I, TYPE 2, 1 1/2"
- (Q) STRIP REFLECTIVE CRACK CONTROL TREATMENT, SYSTEM A
- (R) BITUMINOUS SHOULDER
- (S) BITUMINOUS MIXTURE COMPLETE MODIFIED, 3"
- (T) PIPE UNDERDRAINS, 4"
- (U) PIPE UNDERDRAIN, 4" SPECIAL
- (V) AGGREGATE SHOULDER, TYPE B
- (W) SHOULDER RUMBLE STRIP
- (X) CONCRETE GUTTER, TYPE B (MODIFIED)
- (Y) CCC&G B-9.24
- (Z) CONCRETE MEDIAN SURFACE, 4"

- HMA SURFACE REMOVAL, 3/4"
- HMA SURFACE REMOVAL, 1 1/2"

REVISIONS	
NAME	DATE

ILLINOIS DEPARTMENT OF TRANSPORTATION
EXISTING
TYPICAL SECTIONS
RAMPS A, B
F.A.U. 6717 (BUS 24)

SCALE: VERT. DATE
HORIZ. DRAWN BY
CHECKED BY

PLOT DATE = 4/17/2007
 FILE NAME = c:\p\proj\bus24\bus24\exam\typical_section.dgn
 PLOT SCALE = 1/8" = 1' / IN.
 REFERENCE = SHEET 8