

F.A.U. RTE.	SECTION	COUNTY	TOTAL SHEETS	SHEET NO.
*	35RS-5,36RS-8	TAZEWELL	90	34
STA.		TO STA.		
FED. ROAD DIST. NO.		ILLINOIS	FED. AID PROJECT	
*6717 (BUS 24) & 6713 (IL 8)				



PROJECT BEGINS
STA. 23+61 (RAMP B)

PROJECT BEGINS
STA. 425+99.46 (BUS U.S. RTE. 24)
STA. 13+23.62 (RAMP C)

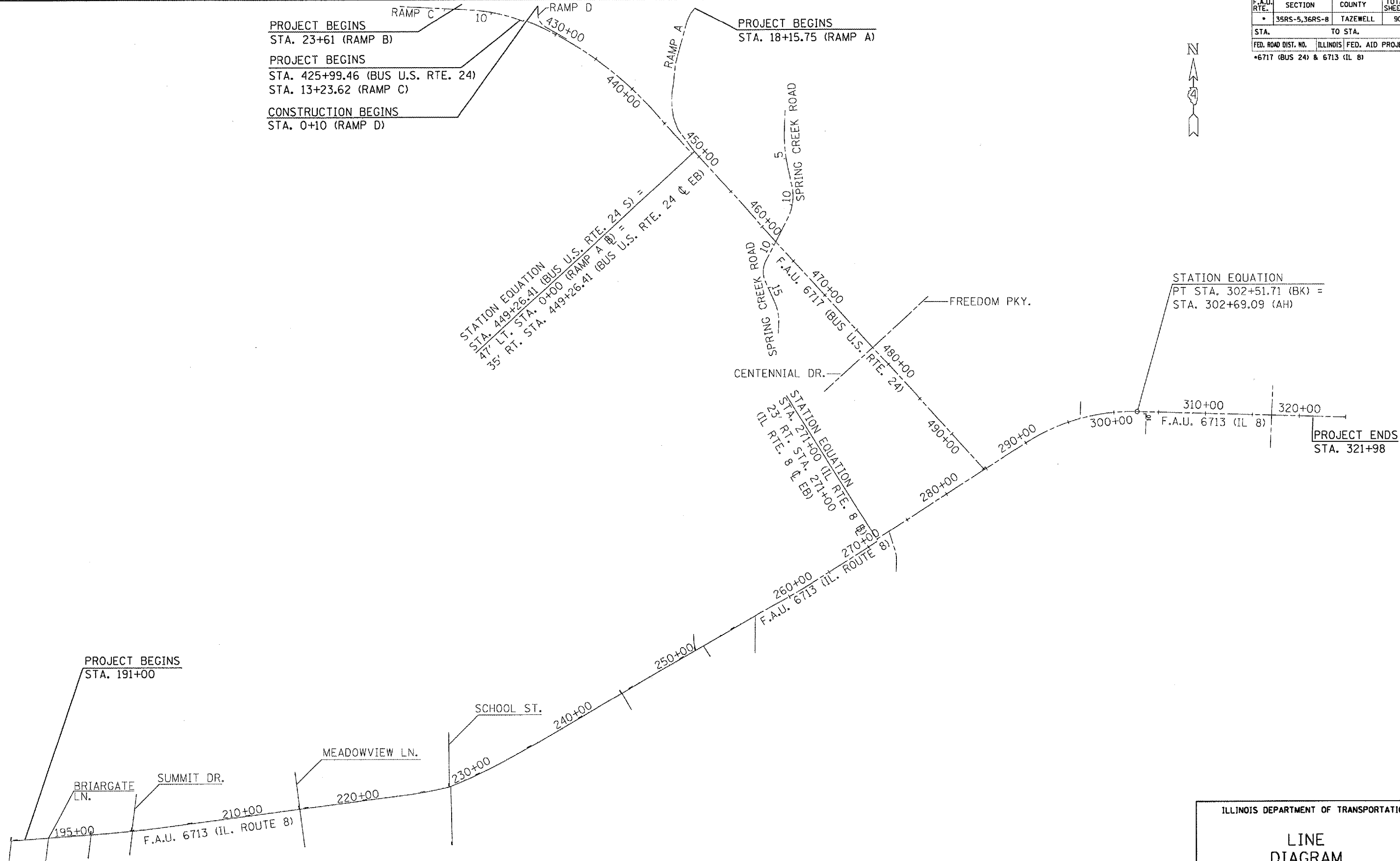
CONSTRUCTION BEGINS
STA. 0+10 (RAMP D)

PROJECT BEGINS
STA. 18+15.75 (RAMP A)

STATION EQUATION
PT STA. 449+26.41 (BUS U.S. RTE. 24 S) =
47' LT. STA. 0+00 (RAMP A @) =
35' RT. STA. 449+26.41 (BUS U.S. RTE. 24 @ EB)

STATION EQUATION
PT STA. 302+51.71 (BK) =
STA. 302+69.09 (AH)

PROJECT ENDS
STA. 321+98



PLOT DATE = 4/1/2007
FILE NAME = c:\p1\2007\68351\construt-plendgn
PLOT SCALE = 100:1
USER NAME = kljanekk

ILLINOIS DEPARTMENT OF TRANSPORTATION

LINE DIAGRAM

SCALE: VERT. NOT TO SCALE
DATE: _____ HORIZ. _____

DRAWN BY _____
CHECKED BY _____