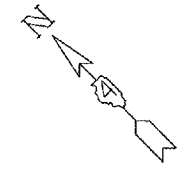


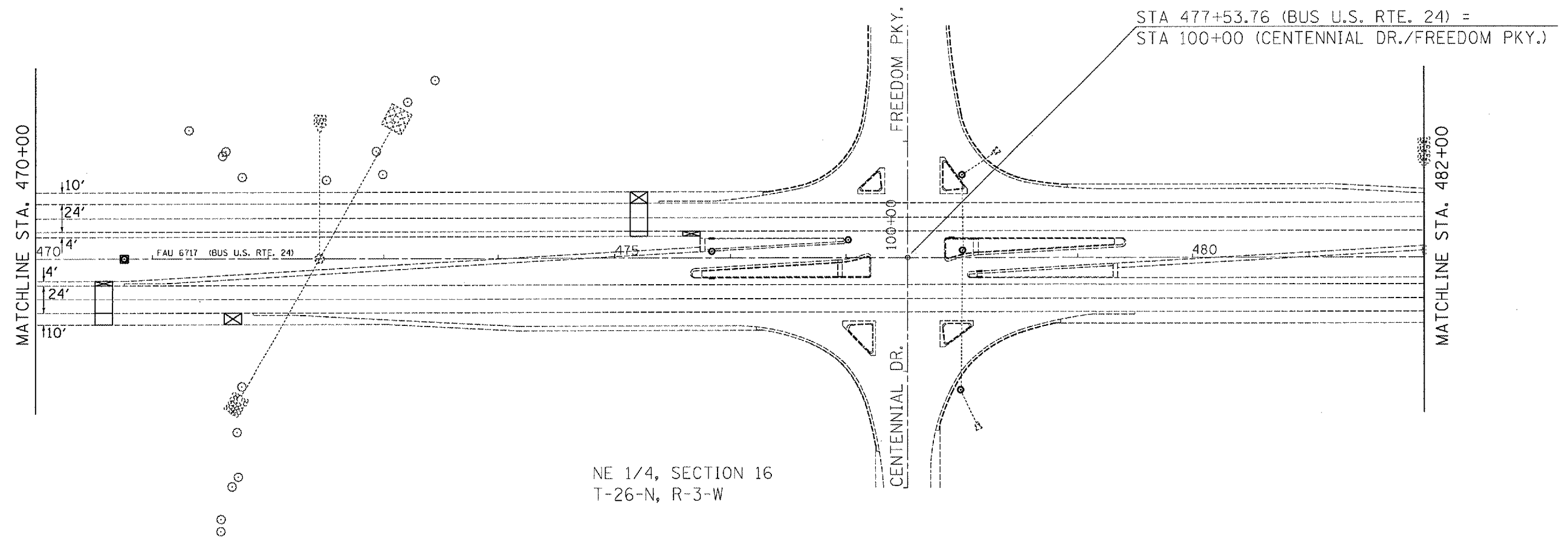
F.A.U. RTE.	SECTION	COUNTY	TOTAL SHEETS	SHEET NO.
35RS-5,36RS-8	TAZEWELL	90	55	
STA.		TO STA.		
FED. ROAD DIST. NO.		ILLINOIS FED. AID PROJECT		
		•6717 (BUS 24) & 6713 (IL 8)		

WB RT. SHLDR. STA. 475+13.31 - 475+28.31
 EB RT. SHLDR. STA. 470+50.75 - 470+65.75

3/4" MILLING	TRANSITION *	1-1/2" MILLING
* PAID AS HOT MIX ASPHALT SURFACE REMOVAL, 1-1/2"		



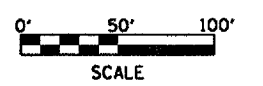
NE 1/4, SECTION 16
 T-26-N, R-3-W



NE 1/4, SECTION 16
 T-26-N, R-3-W

EB MAINLINE STA. 470+50.75 - 470+65.75
 WB MAINLINE STA. 475+13.31 - 475+28.31

1-1/2 " MILLING	TRANSITION *	2-1/4" MILLING
* PAID AS HOT MIX ASPHALT SURFACE REMOVAL, 2-1/4"		



REVISIONS	
NAME	DATE

ILLINOIS DEPARTMENT OF TRANSPORTATION
 EXISTING/REMOVAL
 PLAN SHEET
 BUS U.S. RTE. 24
 STA. 470+00-482+00
 SCALE: VERT. _____
 HORIZ. _____
 DATE _____ DRAWN BY _____
 CHECKED BY _____

PLOT DATE = 4/4/2007
 PLOT SCALE = 1/8" = 100'
 USER NAME = kulmank