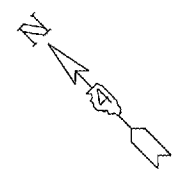
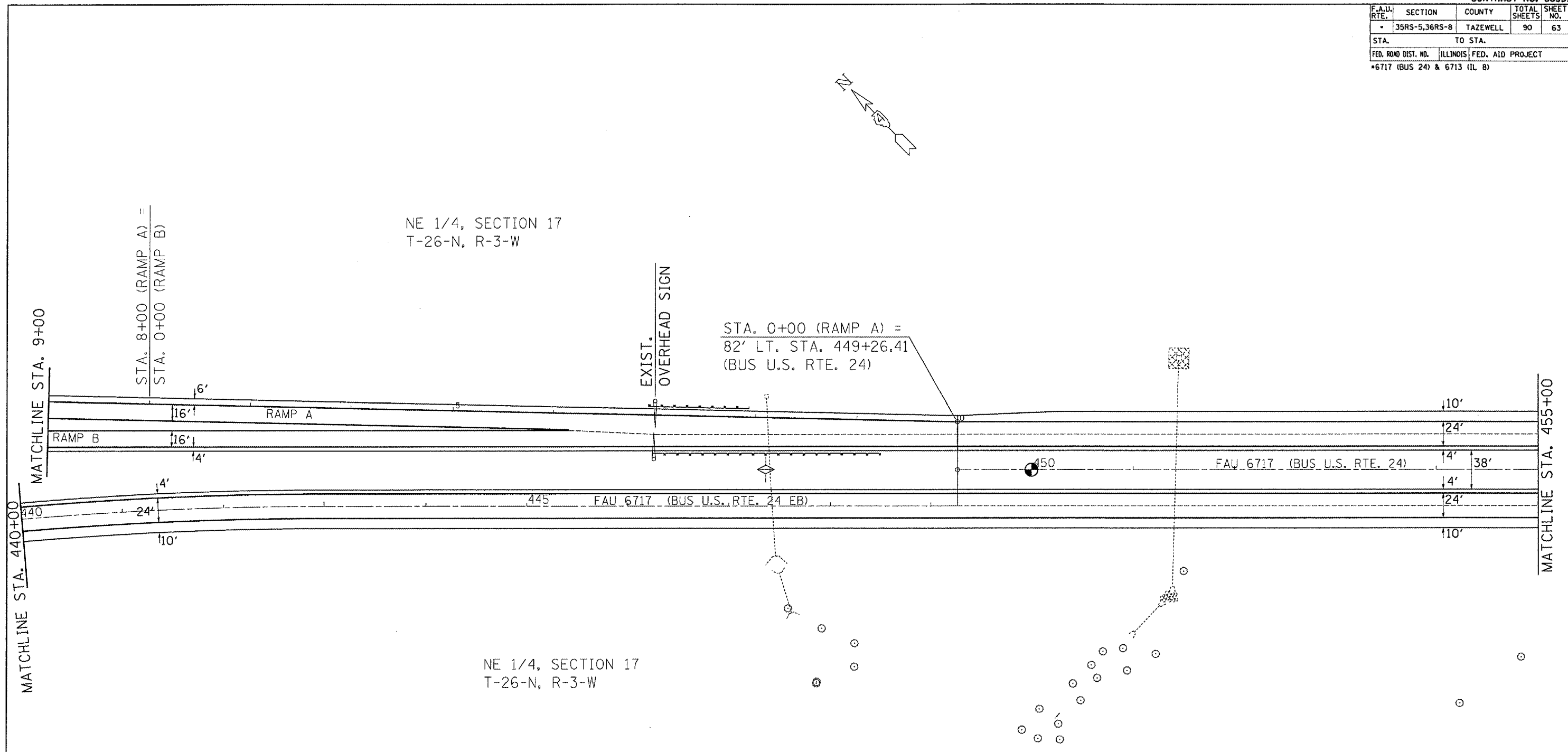


F.A.U. RTE.	SECTION	COUNTY	TOTAL SHEETS	SHEET NO.
35RS-5,36RS-8	TAZEWELL		90	63
STA.		TO STA.		
FED. ROAD DIST. NO.	ILLINOIS	FED. AID PROJECT		
*6717 (BUS 24) & 6713 (IL 8)				

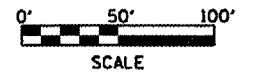


NE 1/4, SECTION 17
T-26-N, R-3-W

STA. 0+00 (RAMP A) =
82' LT. STA. 449+26.41
(BUS U.S. RTE. 24)



NE 1/4, SECTION 17
T-26-N, R-3-W



PLOT DATE = 1/12/2007
 FILE NAME = \\s:\projects\68351\bus24\complan.dgn
 PLOT SCALE = 1/8"=1'-0"
 USER NAME = mjamesk

REVISIONS	
NAME	DATE

ILLINOIS DEPARTMENT OF TRANSPORTATION
PROPOSED PLAN SHEETS
BUS U.S. RTE. 24
STA. 440+00-455+00

SCALE: VERT. _____
 HORIZ. _____

DATE _____ DRAWN BY _____
 CHECKED BY _____