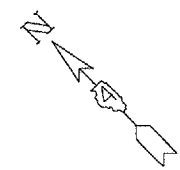


F.A.U. RTE.	SECTION	COUNTY	TOTAL SHEETS	SHEET NO.
35RS-5,36RS-8	TAZEWELL		90	65
STA.		TO STA.		
FED. ROAD DIST. NO.		ILLINOIS FED. AID PROJECT		

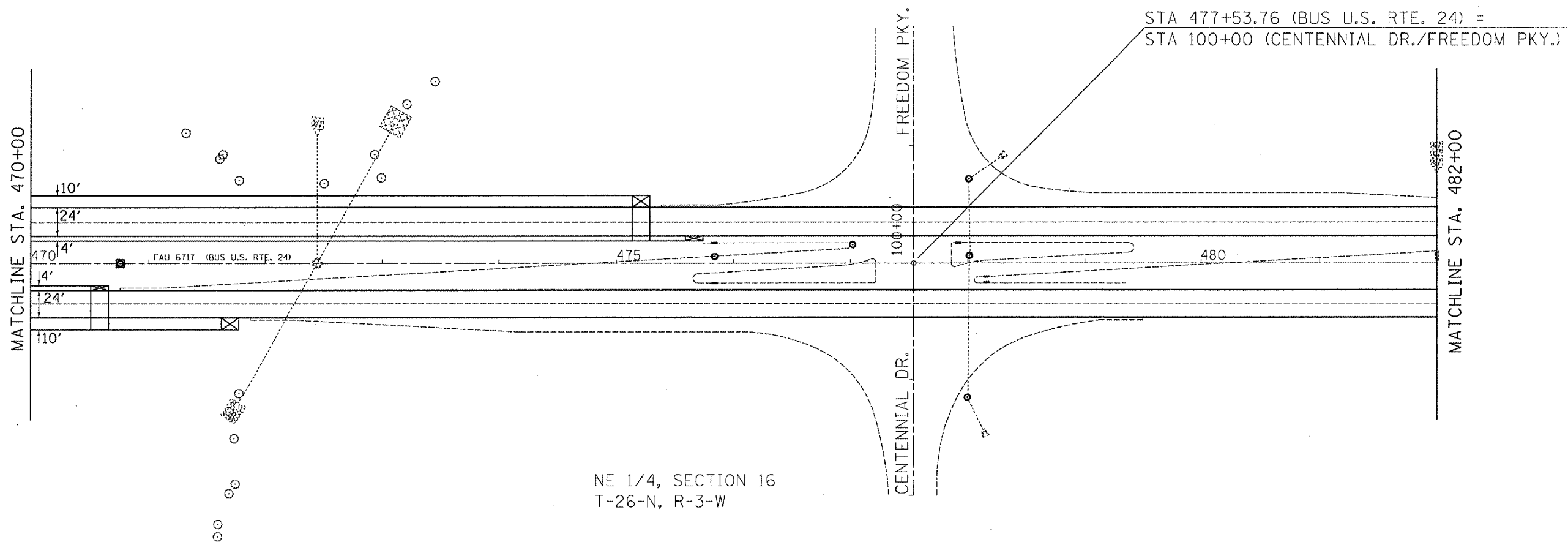
\*6717 (BUS 24) & 6713 (IL 8)

WB RT. SHLDR. STA. 475+13.31 - 475+28.31  
 EB RT. SHLDR. STA. 470+50.75 - 470+65.75

3/4" MILLING	TRANSITION *	1-1/2" MILLING
* PAID AS HOT MIX ASPHALT SURFACE REMOVAL, 1-1/2"		



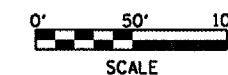
NE 1/4, SECTION 16  
 T-26-N, R-3-W



NE 1/4, SECTION 16  
 T-26-N, R-3-W

EB MAINLINE STA. 470+50.75 - 470+65.75  
 WB MAINLINE STA. 475+13.31 - 475+28.31

1-1/2" MILLING	TRANSITION *	2-1/4" MILLING
* PAID AS HOT MIX ASPHALT SURFACE REMOVAL, 2-1/4"		



REVISIONS	
NAME	DATE

ILLINOIS DEPARTMENT OF TRANSPORTATION  
 PROPOSED PLAN SHEET  
 BUS U.S. RTE. 24  
 STA. 470+00-482+00

SCALE: VERT.  
 DATE: HORIZ.

DRAWN BY  
 CHECKED BY

PLOT DATE = 4/1/2007  
 PLOT TIME = 4:14:54  
 PLOT SCALE = 1/8"=100'  
 USER NAME = k11m04k