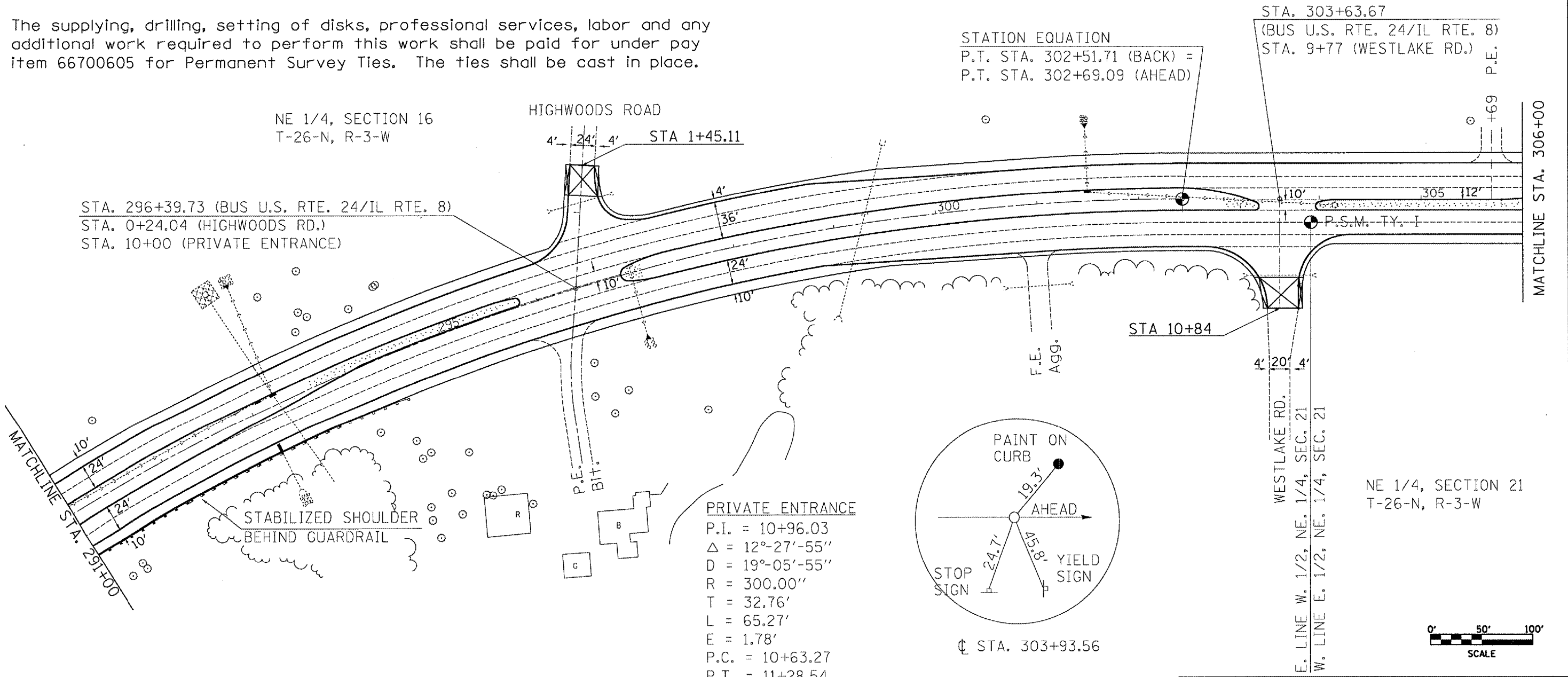


F.A.U. RTE.	SECTION	COUNTY	TOTAL SHEETS	SHEET NO.
35RS-5,36RS-8	TAZEWELL	90	69	
STA.		TO STA.		
FED. ROAD DIST. NO.	ILLINOIS	FED. AID PROJECT		
*6717 (BUS 24) & 6713 (IL 8)				

All ties for the section corner at Sta. 303+93.56 shall be verified by a licensed land surveyor prior to any milling operations. The section corner shall be reset at the direction of a licensed land surveyor after all paving and striping operations are complete. If any dimensions have been changed, it shall be the responsibility of the surveyor to file a new monument record in the Tazewell County Courthouse.

A copy of all drawings or monument records produced from this project shall be sent to the Chief of Surveys, Illinois Department of Transportation, District 4, Peoria.

The supplying, drilling, setting of disks, professional services, labor and any additional work required to perform this work shall be paid for under pay item 66700605 for Permanent Survey Ties. The ties shall be cast in place.



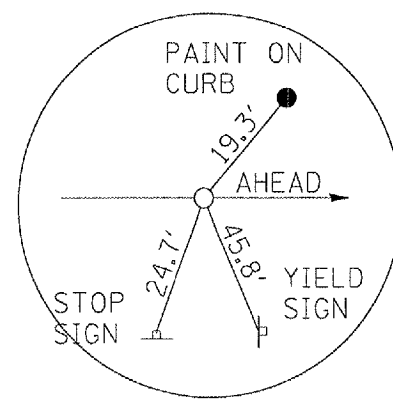
STATION EQUATION
 P.T. STA. 302+51.71 (BACK) =
 P.T. STA. 302+69.09 (AHEAD)

STA. 303+63.67
 (BUS U.S. RTE. 24/IL RTE. 8)
 STA. 9+77 (WESTLAKE RD.)
 P.E.

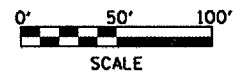
NE 1/4, SECTION 16
 T-26-N, R-3-W

STA. 296+39.73 (BUS U.S. RTE. 24/IL RTE. 8)
 STA. 0+24.04 (HIGHWOODS RD.)
 STA. 10+00 (PRIVATE ENTRANCE)

PRIVATE ENTRANCE
 P.I. = 10+96.03
 $\Delta = 12^\circ-27'-55''$
 $D = 19^\circ-05'-55''$
 $R = 300.00'$
 $T = 32.76'$
 $L = 65.27'$
 $E = 1.78'$
 P.C. = 10+63.27
 P.T. = 11+28.54



NE 1/4, SECTION 21
 T-26-N, R-3-W



REVISIONS	
NAME	DATE

ILLINOIS DEPARTMENT OF TRANSPORTATION
PROPOSED PLAN SHEET
 BUS 24/IL ROUTE 8
 STA. 291+00 - 306+00
 SCALE: VERT. _____
 HORIZ. _____
 DATE _____
 DRAWN BY _____
 CHECKED BY _____

PLOT DATE = 4/1/2007
 FILE NAME = c:\p\as\bus24\conult\plan.dgn
 PLOT SCALE = 1/8"=1'-0"
 USER NAME = kjlmerkk