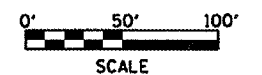
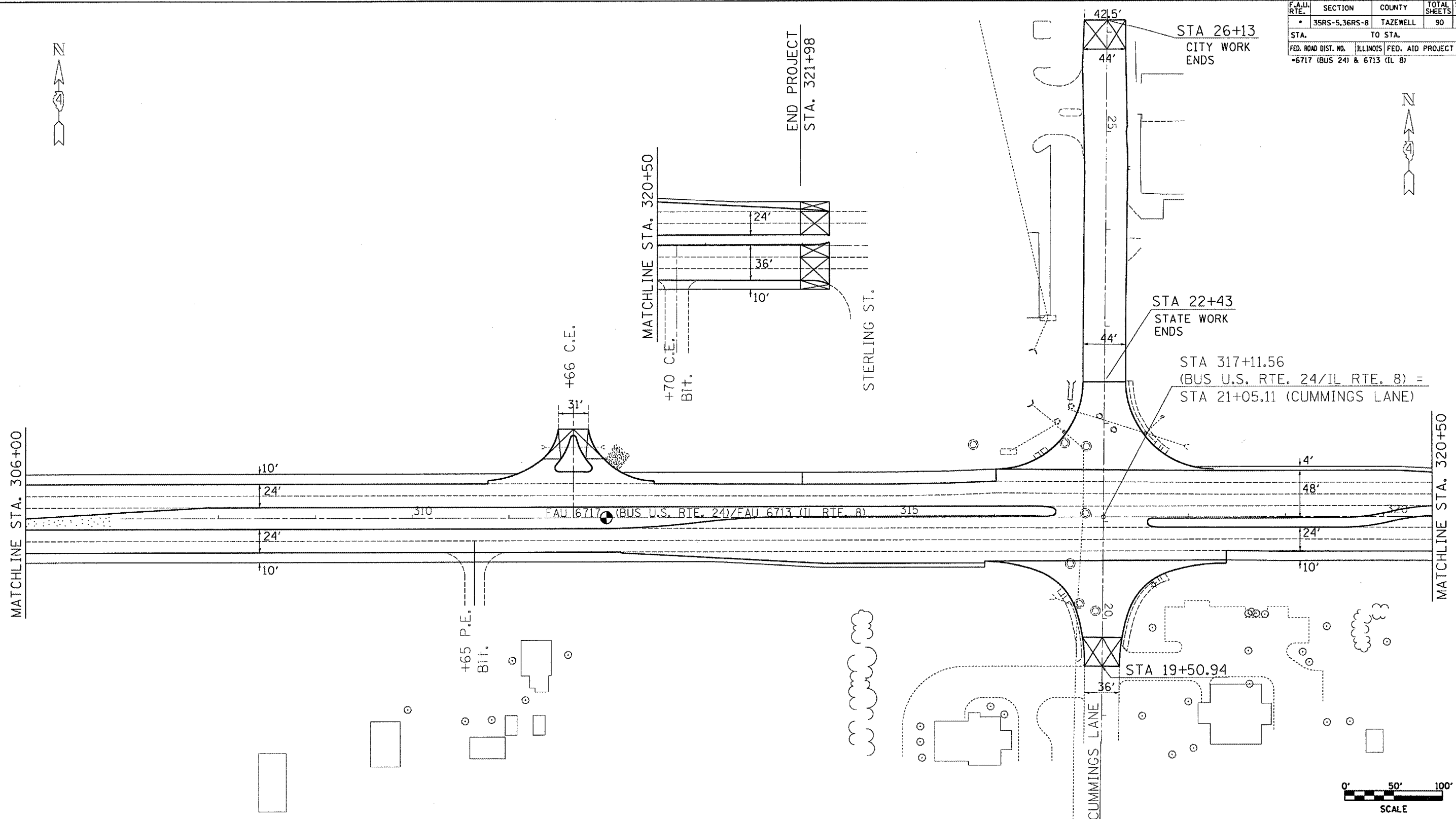


F.A.U. RTE.	SECTION	COUNTY	TOTAL SHEETS	SHEET NO.
35RS-5,36RS-8	TAZEWELL	90	70	
STA.		TO STA.		
FED. ROAD DIST. NO.		ILLINOIS FED. AID PROJECT		
6717 (BUS 24) & 6713 (IL 8)				



PLOT DATE = 4/14/2007
 FILE NAME = c:\projects\bus24\curren\plan.mxdg
 PLOT SCALE = 1/8" = 100'
 USER NAME = kclimack

REVISIONS	
NAME	DATE

ILLINOIS DEPARTMENT OF TRANSPORTATION
PROPOSED PLAN SHEET
BUS 24/IL ROUTE 8
STA. 306+00 - E.O.P.

SCALE: VERT. _____
 HORIZ. _____

DATE _____ DRAWN BY _____
 CHECKED BY _____