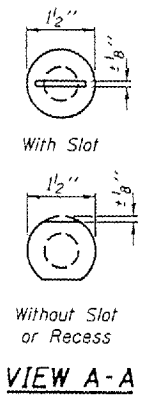
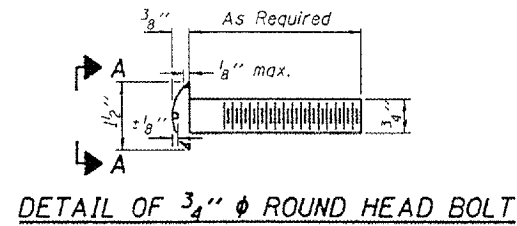


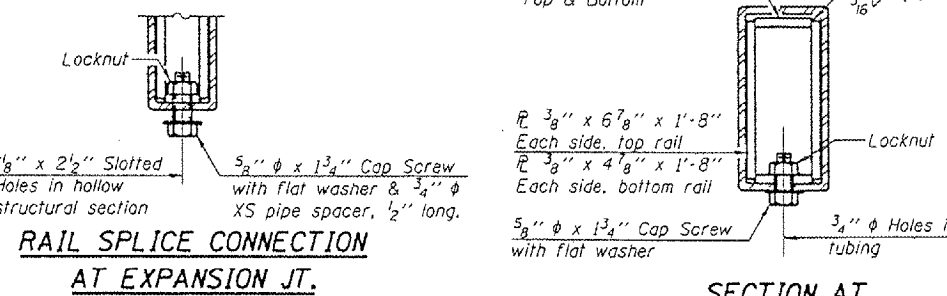
STATE OF ILLINOIS
DEPARTMENT OF TRANSPORTATION

ROUTE NO.	SECTION	COUNTY	STA.	POST	SHEET NO.
F.A.P. 693	(119B-31)	TAZEWELL	33	16	14 SHEETS
FED. AID PROJ. NO.		ILLINOIS	FED. AID PROJECT		

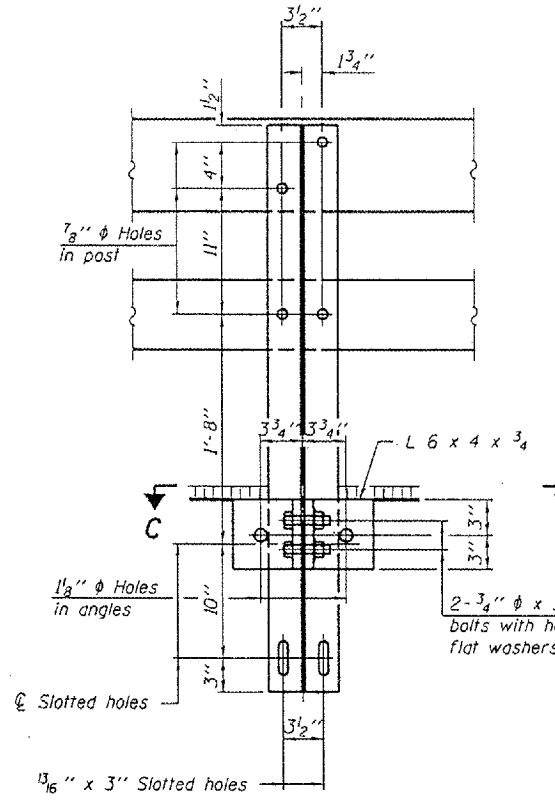
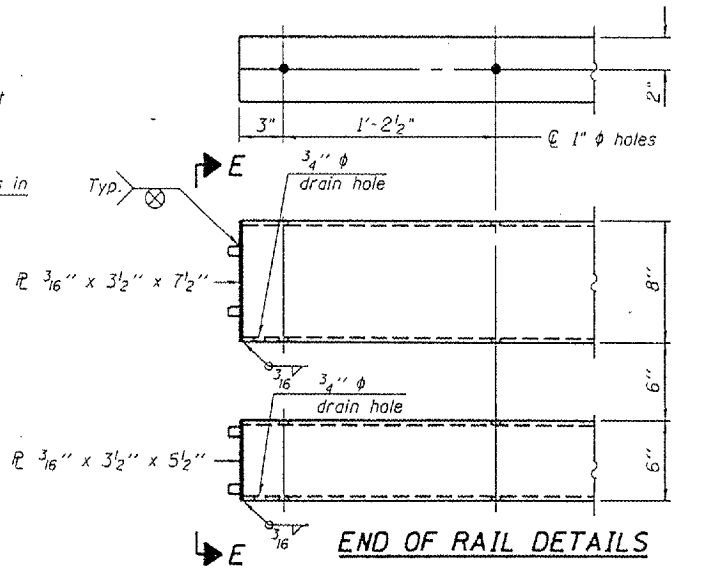
Contract #68415



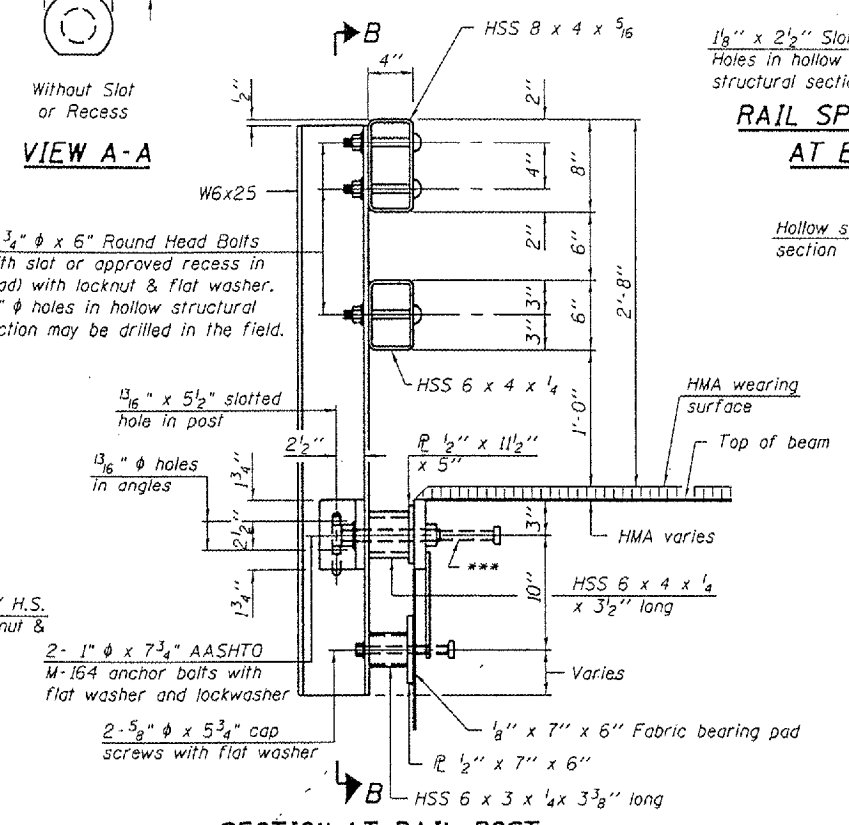
4-3/4" ϕ x 6" Round Head Bolts
(With slot or approved recess in head) with locknut & flat washer.
3/8" ϕ holes in hollow structural section may be drilled in the field.



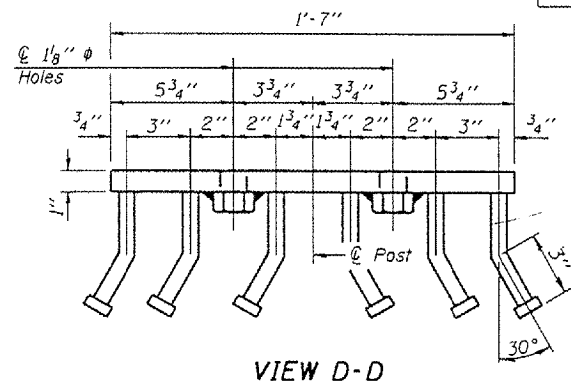
SECTION AT RAIL SPLICE



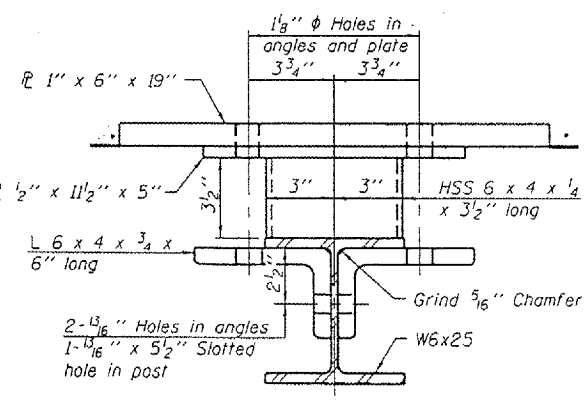
SECTION B-B



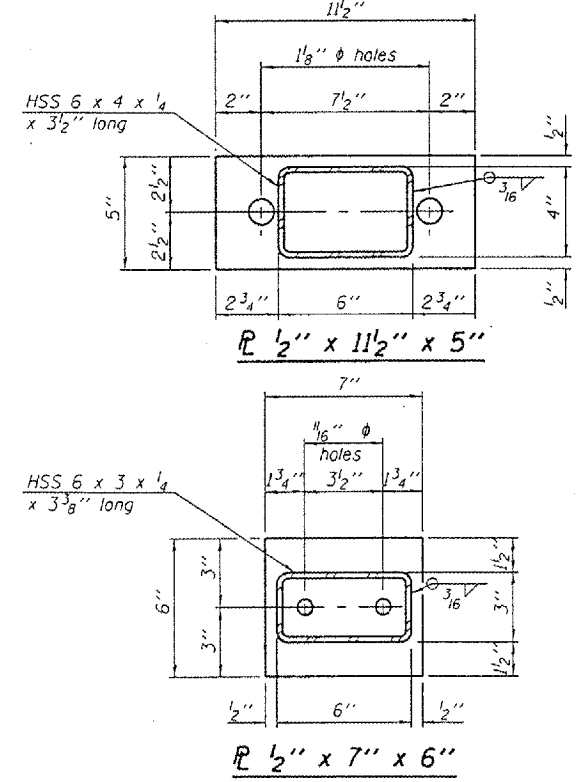
SECTION AT RAIL POST



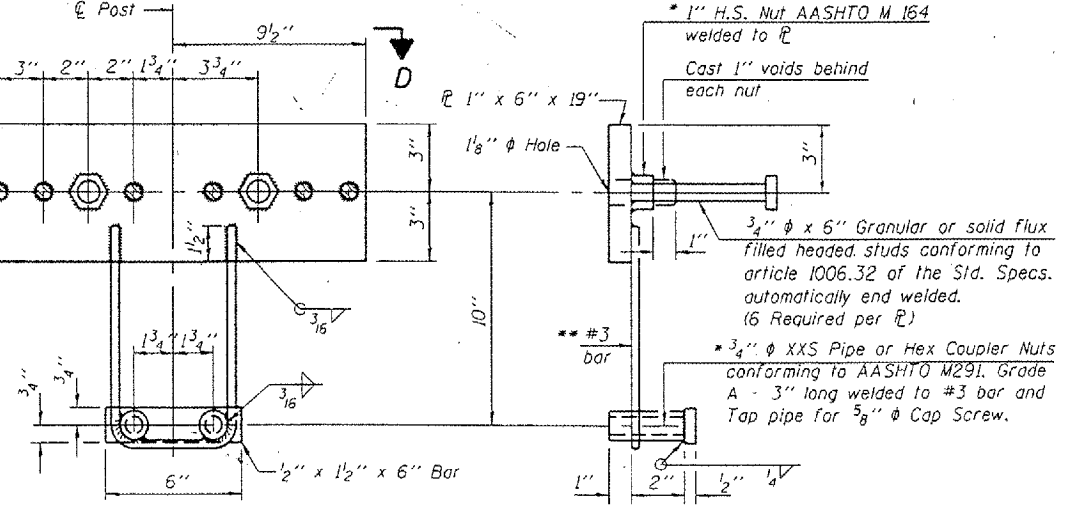
VIEW D-D



SECTION C-C



ANCHOR DEVICE



Notes:
All field drilled holes shall be coated with an approved zinc rich paint before erection.
For multi-span bridges, sufficient 1/4" x 6" x 1'-2" galvanized steel shims shall be provided to align rail between adjacent spans. Cost included with Steel Bridge Rail, Type SM.
All steel rail members shall be galvanized according to Article 509.05 of the Standard Specifications.
*** The studs of the anchor devices shall be placed below the top reinforcement bars and the outermost longitudinal reinforcement bar shall be placed directly above the studs of the rail post anchor device.

BILL OF MATERIAL

Item	Unit	Quantity
Steel Railing, Type SM	Foot	207

STEEL RAILING, TYPE SM
WITH HOT-MIX ASPHALT
WEARING SURFACE
ILLINOIS ROUTE 9 OVER
PRAIRIE CREEK
F.A.P. ROUTE 693 SECTION (119B-31)
TAZEWELL COUNTY
SN 090-0061

DESIGNED BWP	THOUVENOT, WADE & MOERCHEN, INC. INCORPORATED 1940 1333 COLLINGSVILLE RD. BIRMINGHAM, ILLINOIS 62226 TEL: (618) 624-1488 FAX: (618) 624-1498 E-MAIL: corp@twn-inc.com
CHECKED KPC	
DRAWN BWP	
CHECKED KPC	

* Threaded areas shall be plugged or blocked off during casting of beam. Galvanized after fabrication.
** Whenever the lower insert assemblies interfere with strand locations, the #3 bars shall be cut and adjusted in order to allow raising or lowering of the lower inserts. Maximum adjustment not to exceed 1/2".