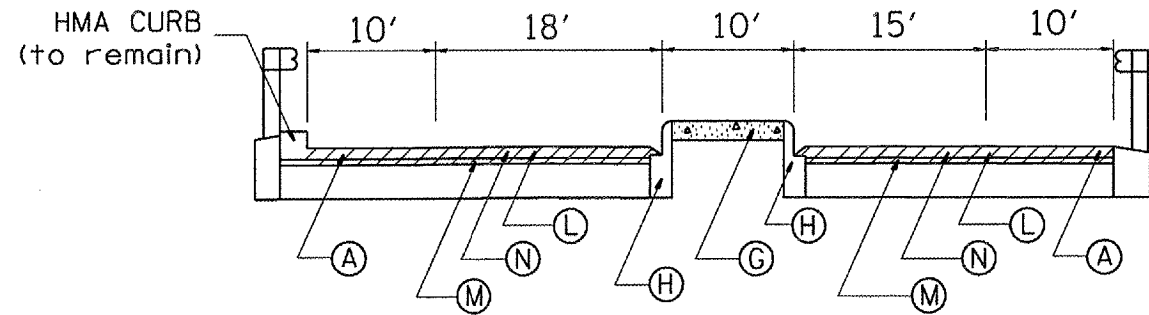
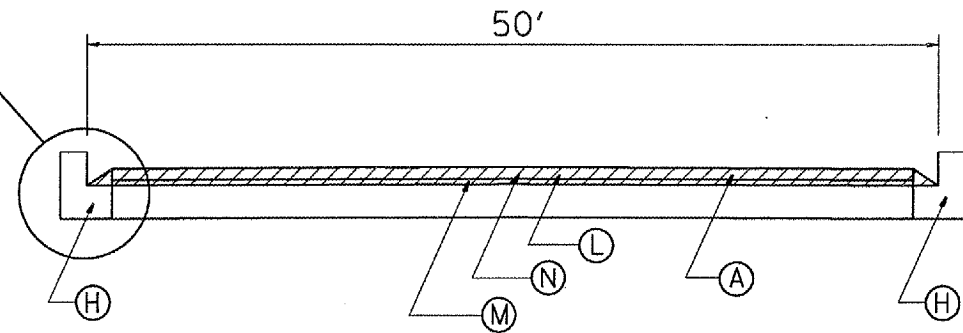
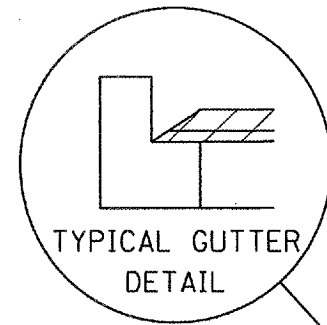


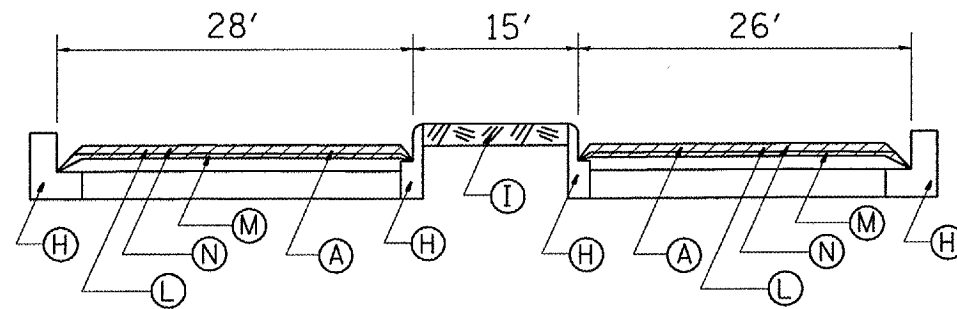
| F.A.P. RTE. | SECTION | COUNTY | TOTAL SHEETS | SHEET NO. |
|---------------------|---|------------------|--------------|-----------|
| 317 | 144-45RS-5, 146-1RS-7 45-(RB, RB-2, BR) | PEORIA | 02 | 33 |
| FED. ROAD DIST. NO. | ILLINOIS | FED. AID PROJECT | | |



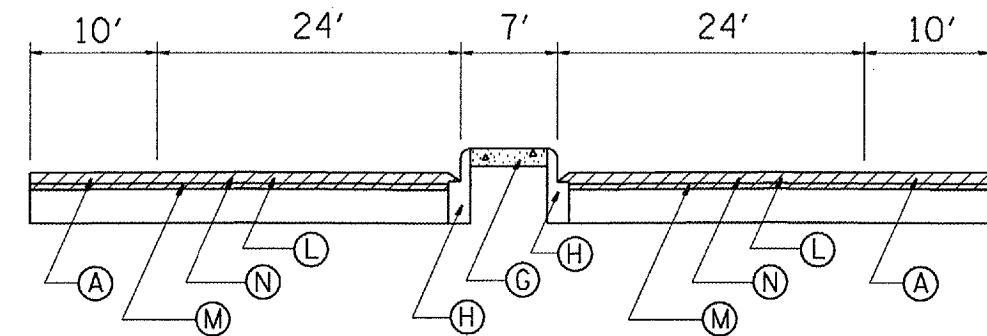
CAMERON LANE (NORTH) TYPICAL SECTION
(LOOKING NORTH) - EXTEND OVERLAY TO EXISTING BUTT JOINT



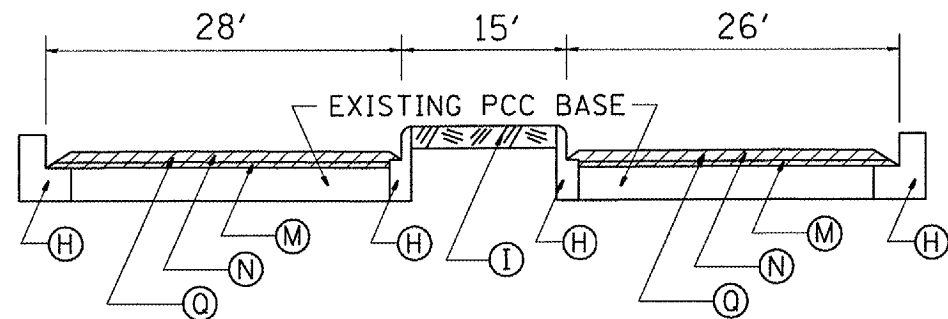
WALNUT LANE TYPICAL SECTION
(LOOKING NORTH) - EXTEND TO WHEELER ROAD INTERSECTION



FACTORY ROAD TYPICAL SECTION - HMA PAVEMENT
(LOOKING SOUTH)- EXTEND OVERLAY TO RADIUS RETURN OF INTERSECTING SIDEROADS



TERMINAL ROAD TYPICAL SECTION
(LOOKING SOUTH) - EXTEND OVERLAY TO EXISTING BUTT JOINT



FACTORY ROAD TYPICAL SECTION - CONCRETE PAVEMENT
(LOOKING SOUTH)- EXTEND OVERLAY TO RADIUS RETURN OF INTERSECTING SIDEROADS

LEGEND

- Ⓐ EXISTING 2 1/2 " AND VARIABLE HMA
- Ⓒ PROPOSED 2 1/4 " HMA SURFACE REMOVAL (HATCHED AREA)
- Ⓒ EXISTING CONCRETE MEDIAN SURFACE - 4"
- Ⓜ PROPOSED 3/4" LEVELING BINDER MACHINE METHOD, TYPE 2
- Ⓜ EXISTING COMBINATION CONCRETE CURB & GUTTER
- Ⓝ PROPOSED 1 1/2 " HMA SURFACE COURSE
- Ⓜ EXISTING GRASS MEDIAN SURFACE
- Ⓠ PROPOSED 2 1/4" CONCRETE SURFACE REM. (HATCHED AREA)

ILLINOIS DEPARTMENT OF TRANSPORTATION

PROPOSED TYPICAL SECTIONS - US 24

DATE: 02-10-06

DRAWN BY: OBB

CHECKED BY: CEM